

For Research Use Only

# MTA3 Recombinant antibody

Catalog Number: 83042-3-RR

Featured Product



## Basic Information

### Catalog Number:

83042-3-RR

### Size:

100ul, Concentration: 1000 ug/ml by Nanodrop;

### Source:

Rabbit

### Isotype:

IgG

### Immunogen Catalog Number:

AG6400

### GenBank Accession Number:

BC053631

### GeneID (NCBI):

57504

### UNIPROT ID:

Q9BTC8

### Full Name:

metastasis associated 1 family, member 3

### Calculated MW:

68 kDa

### Observed MW:

62 kDa, 68 kDa

### Purification Method:

Protein A purification

### CloneNo.:

230350D12

### Recommended Dilutions:

WB 1:5000-1:50000

IF/ICC 1:50-1:500

## Applications

### Tested Applications:

WB, IF/ICC, FC (Intra), ELISA

### Species Specificity:

human, mouse

### Positive Controls:

WB : Jurkat cells, MCF-7 cells, A375 cells, NIH/3T3 cells, C2C12 cells, Raji cells

IF/ICC : U-251 cells,

## Background Information

The metastasis-associated (MTA) family contains three members, MTA1, MTA2 and MTA3 (PMID:12167865). Metastasis-associated protein 3 (MTA3) is a cell-type specific component of the Mi-2-NURD transcriptional co-repressor complex. It has a role in maintenance of the normal epithelial architecture through the repression of SNAIL1 transcription in a histone deacetylase-dependent manner, and thus the regulation of E-cadherin levels.

## Storage

### Storage:

Store at -20°C. Stable for one year after shipment.

### Storage Buffer:

PBS with 0.02% sodium azide and 50% glycerol pH 7.3.

Aliquoting is unnecessary for -20°C storage

\*\*\* 20ul sizes contain 0.1% BSA

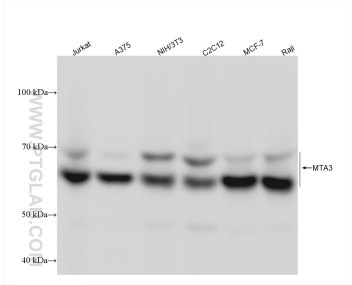
For technical support and original validation data for this product please contact:

T: 1 (888) 4PTGLAB (1-888-478-4522) (toll free in USA), or 1(312) 455-8498 (outside USA)

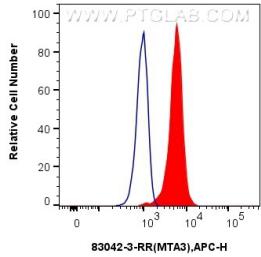
E: [proteintech@ptglab.com](mailto:proteintech@ptglab.com)  
W: [ptglab.com](http://ptglab.com)

This product is exclusively available under Proteintech Group brand and is not available to purchase from any other manufacturer.

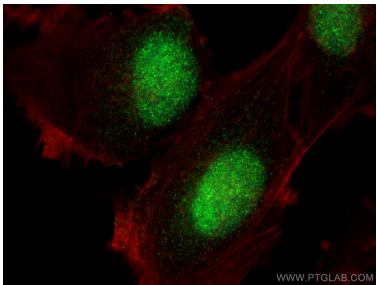
Selected Validation Data



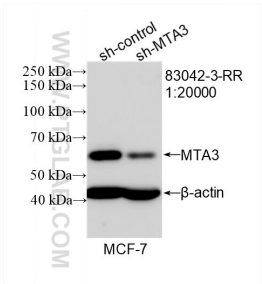
Various lysates were subjected to SDS PAGE followed by western blot with 83042-3-RR (MTA3 antibody) at dilution of 1:20000 incubated at room temperature for 1.5 hours.



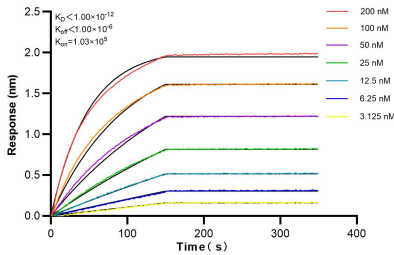
1x10<sup>6</sup> U-251 cells were intracellularly stained with 0.25 ug MTA3 Recombinant antibody (83042-3-RR, Clone:230350D12) and APC-Conjugated AffiniPure Goat Anti-Rabbit IgG(H+L)(red), or 0.25 ug Rabbit IgG control Rabbit PolyAb (30000-O-AP) (blue). Cells were fixed and permeabilized with True-Nuclear Transcription Factor Buffer Set.



Immunofluorescent analysis of (4% PFA) fixed U-251 cells using MTA3 antibody (83042-3-RR, Clone: 230350D12) at dilution of 1:200 and Multi-rAb CoraLite® Plus 488-Goat Anti-Rabbit Recombinant Secondary Antibody (H+L) (RGAR002), CL594-Phalloidin (red).



WB result of MTA3 antibody (83042-3-RR; 1:20000; incubated at room temperature for 1.5 hours) with sh-Control and sh-MTA3 transfected MCF-7 cells.



Biolayer interferometry (BLI) kinetic assays of 83042-3-RR against Human MTA3 were performed. The affinity constant is below 1 pM.