

For Research Use Only

SURF1 Recombinant antibody

Catalog Number: 83052-5-RR



Basic Information

Catalog Number:

83052-5-RR

Size:

100ul, Concentration: 700 ug/ml by Nanodrop;

Source:

Rabbit

Isotype:

IgG

Immunogen Catalog Number:

AG3959

GenBank Accession Number:

BC028314

GeneID (NCBI):

6834

UNIPROT ID:

Q15526

Full Name:

surfeit 1

Calculated MW:

33 kDa

Observed MW:

30-31 kDa

Purification Method:

Protein A purification

CloneNo.:

230210F11

Recommended Dilutions:

IP 0.5-4.0 ug for 1.0-3.0 mg of total protein lysate

IHC 1:50-1:500

IF/ICC 1:150-1:600

Applications

Tested Applications:

IHC, IF/ICC, FC (Intra), IP, ELISA

Species Specificity:

human, mouse

Note-IHC: suggested antigen retrieval with *TE buffer pH 9.0*; (*) Alternatively, antigen retrieval may be performed with *citrate buffer pH 6.0*

Positive Controls:

IP: HeLa cells,

IHC: human liver cancer tissue, mouse heart tissue

IF/ICC: HeLa cells,

Storage

Storage:

Store at -20°C. Stable for one year after shipment.

Storage Buffer:

PBS with 0.02% sodium azide and 50% glycerol pH 7.3.

Aliquoting is unnecessary for -20°C storage

*** 20ul sizes contain 0.1% BSA

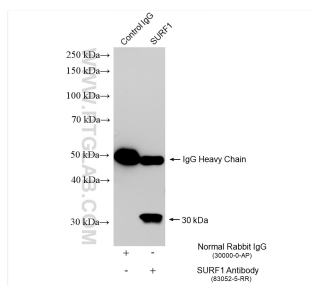
For technical support and original validation data for this product please contact:

T: 1 (888) 4PTGLAB (1-888-478-4522) (toll free in USA), or 1(312) 455-8498 (outside USA)

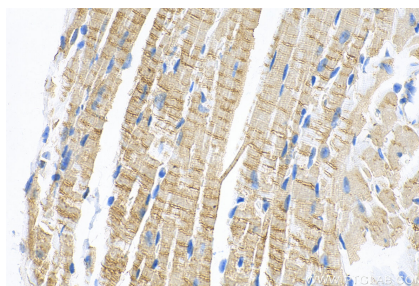
E: proteintech@ptglab.com
W: ptglab.com

This product is exclusively available under Proteintech Group brand and is not available to purchase from any other manufacturer.

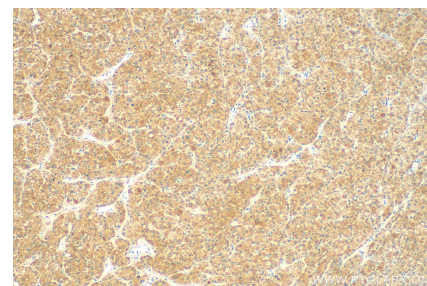
Selected Validation Data



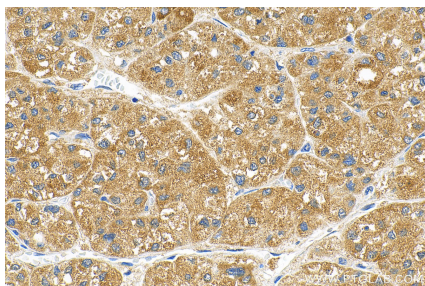
IP result of anti-SURF1 (IP:83052-5-RR, 4ug; Detection:83052-5-RR 1:2000) with HeLa cells lysate 1050 ug.



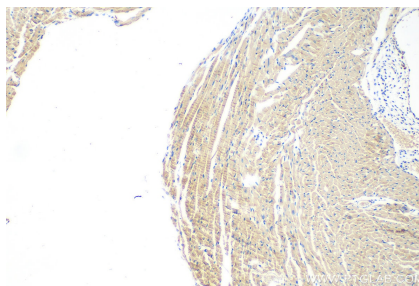
Immunohistochemical analysis of paraffin-embedded mouse heart tissue slide using 83052-5-RR (SURF1 antibody) at dilution of 1:200 (under 40x lens). Heat mediated antigen retrieval with Tris-EDTA buffer (pH 9.0).



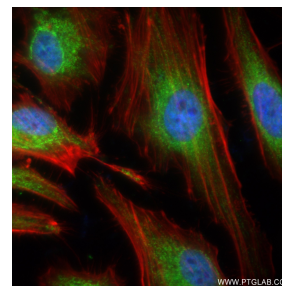
Immunohistochemical analysis of paraffin-embedded human liver cancer tissue slide using 83052-5-RR (SURF1 antibody) at dilution of 1:200 (under 10x lens). Heat mediated antigen retrieval with Tris-EDTA buffer (pH 9.0).



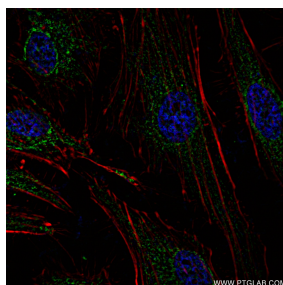
Immunohistochemical analysis of paraffin-embedded human liver cancer tissue slide using 83052-5-RR (SURF1 antibody) at dilution of 1:200 (under 40x lens). Heat mediated antigen retrieval with Tris-EDTA buffer (pH 9.0).



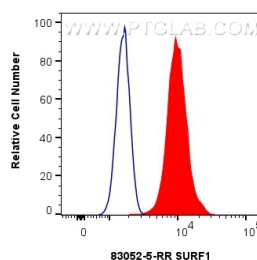
Immunohistochemical analysis of paraffin-embedded mouse heart tissue slide using 83052-5-RR (SURF1 antibody) at dilution of 1:200 (under 10x lens). Heat mediated antigen retrieval with Tris-EDTA buffer (pH 9.0).



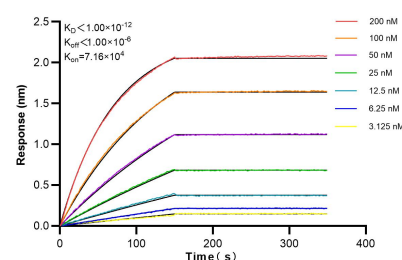
Immunofluorescent analysis of (4% PFA) fixed HeLa cells using SURF1 antibody (83052-5-RR, Clone: 230210F11) at dilution of 1:300 and CoraLite@488-Conjugated AffiniPure Goat Anti-Mouse IgG(H+L) (SA00013-1).



Immunofluorescent analysis of (4% PFA) fixed HeLa cells using SURF1 antibody (83052-5-RR, Clone: 230210F11) at dilution of 1:300 and CoraLite@488-Conjugated AffiniPure Goat Anti-Mouse IgG(H+L) (SA00013-1).



1×10^6 HepG2 cells were intracellularly stained with 0.4 ug SURF1 Recombinant antibody (83052-5-RR, Clone:230210F11) and CoraLite@488-Conjugated AffiniPure Goat Anti-Rabbit IgG(H+L) (SA00013-2)(red), or 0.4 ug Isotype Control (blue). Cells were fixed with 4% PFA and permeabilized with Flow Cytometry Perm Buffer (PF00011-C).



Biolayer interferometry (BLI) kinetic assays of 83052-5-RR against Human SURF1 were performed. The affinity constant is below 1 pM.