

For Research Use Only

# ITB3 Recombinant monoclonal antibody, PBS Only (Detector)

Catalog Number: 83053-8-PBS



## Basic Information

Catalog Number:

83053-8-PBS

Size:

100ug, Concentration: 1 mg/ml by Nanodrop;

Source:

Rabbit

Isotype:

IgG

Immunogen Catalog Number:

EG10480

GenBank Accession Number:

GeneID (NCBI):

3690

Full Name:

integrin, beta 3 (platelet glycoprotein IIIa, antigen CD61)

Purification Method:

Protein A purification

CloneNo.:

252741G6

## Applications

Tested Applications:

Sandwich ELISA, Indirect ELISA

Species Specificity:

human

## Product Information

83053-8-PBS targets ITB3 as part of a matched antibody pair.

MP00047-3: 83053-9-PBS capture and 83053-8-PBS detection (validated in Sandwich ELISA)

Unconjugated rabbit recombinant monoclonal antibody in PBS only (BSA and azide free) storage buffer at a concentration of 1 mg/mL, ready for conjugation. Created using Proteintech's proprietary in-house recombinant technology. Recombinant production enables unrivalled batch-to-batch consistency, easy scale-up, and future security of supply.

This conjugation ready format makes antibodies ideal for use in many applications including: ELISAs, multiplex assays requiring matched pairs, mass cytometry, and multiplex imaging applications. Antibody use should be optimized by the end user for each application and assay.

## Storage

Storage:

Store at -80°C.

Storage Buffer:

PBS only, pH7.3

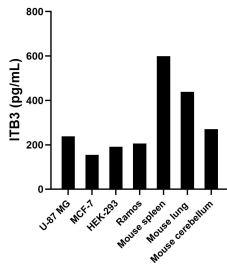
For technical support and original validation data for this product please contact:

T: 1 (888) 4PTGLAB (1-888-478-4522) (toll free in USA), or 1(312) 455-8498 (outside USA)

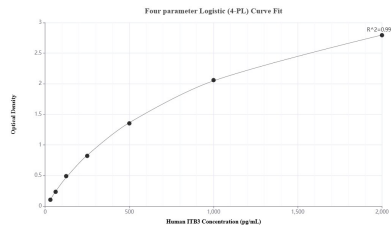
E: [proteintech@ptglab.com](mailto:proteintech@ptglab.com)  
W: [ptglab.com](http://ptglab.com)

This product is exclusively available under Proteintech Group brand and is not available to purchase from any other manufacturer.

## Selected Validation Data



The mean CD61 / Integrin beta 3 concentration was determined to be 238.6 pg/mL in U-87 MG cell extract based on a 1.2 mg/mL extract load, 154.3 pg/mL in MCF-7 cell extract based on a 1.2 mg/mL extract load, 191.7 pg/mL in HEK-293 cell extract based on a 1.5 mg/mL extract load, 205.5 pg/mL in Ramos cell extract based on a 1.5 mg/mL extract load, 599.2 pg/mL in mouse spleen tissue extract based on a 7.6 mg/mL extract load, 438.0 pg/mL in mouse lung



Sandwich ELISA standard curve of MP00047-3, Human CD61 / Integrin beta 3 Recombinant Matched Antibody Pair - PBS only. 83053-9-PBS was coated to a plate as the capture antibody and incubated with serial dilutions of standard Eg10480. 83053-8-PBS was HRP conjugated as the detection antibody. Range: 31.25-2000 pg/mL