

For Research Use Only

OATP1B1/SLCO1B1 Recombinant antibody, PBS Only (Detector)

Catalog Number: 83054-3-PBS



Basic Information

Catalog Number: 83054-3-PBS	GenBank Accession Number: NM_006446	Purification Method: Protein A purification
Size: 100ug, Concentration: 1mg/ml by Nanodrop;	GeneID (NCBI): 10599	CloneNo.: 230090G9
Source: Rabbit	UNIPROT ID: Q9Y6L6	
Isotype: IgG	Full Name: solute carrier organic anion transporter family, member 1B1	
	Calculated MW: 76 kDa	

Applications

Tested Applications:
Cytometric bead array, Sandwich ELISA, Indirect ELISA, Sample test

Species Specificity:
human

Product Information

83054-3-PBS targets OATP1B1/SLCO1B1 as part of a matched antibody pair:

MP00051-1: 83054-1-PBS capture and 83054-3-PBS detection (validated in Cytometric bead array)

MP00051-2: 83054-4-PBS capture and 83054-3-PBS detection (validated in Cytometric bead array)

MP00051-3: 83054-2-PBS capture and 83054-3-PBS detection (validated in Cytometric bead array)

MP00051-4: 83054-6-PBS capture and 83054-3-PBS detection (validated in Sandwich ELISA)

Unconjugated rabbit recombinant monoclonal antibody in PBS only (BSA and azide free) storage buffer at a concentration of 1 mg/mL, ready for conjugation. Created using Proteintech's proprietary in-house recombinant technology. Recombinant production enables unrivalled batch-to-batch consistency, easy scale-up, and future security of supply.

This conjugation ready format makes antibodies ideal for use in many applications including: ELISAs, multiplex assays requiring matched pairs, mass cytometry, and multiplex imaging applications. Antibody use should be optimized by the end user for each application and assay.

Storage

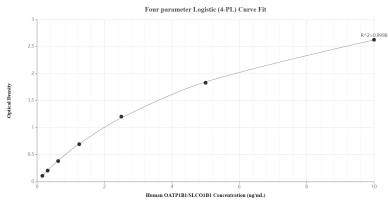
Storage:
Store at -80°C.

Storage Buffer:
100% PBS pH 7.3

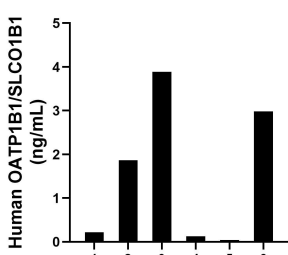
For technical support and original validation data for this product please contact:
T: 1 (888) 4PTGLAB (1-888-478-4522) (toll free in USA), or 1(312) 455-8498 (outside USA)
E: proteintech@ptglab.com
W: ptglab.com

This product is exclusively available under Proteintech Group brand and is not available to purchase from any other manufacturer.

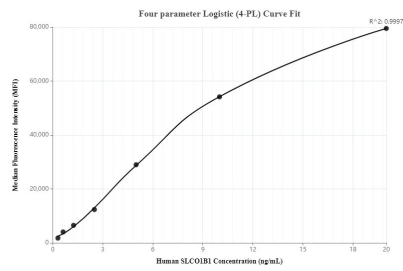
Selected Validation Data



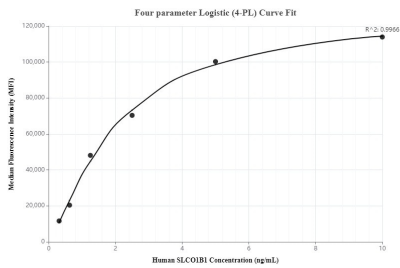
Sandwich ELISA standard curve of MP00051-4, Human OATP1B1/SLCO1B1 Recombinant Matched Antibody Pair - PBS only. 83054-6-PBS was coated to a plate as the capture antibody and incubated with serial dilutions of standard SY00964. 83054-3-PBS was HRP conjugated as the detection antibody. Range: 0.156-10 ng/mL.



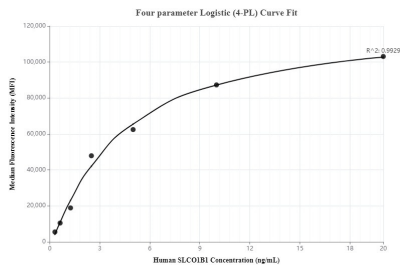
Serum of six individual healthy human donors was measured. The OATP1B1/SLCO1B1 concentration of detected samples was determined to be 1.52 ng/mL with a range of 0.04-3.89 ng/mL.



Cytometric bead array standard curve of MP00051-1, SLCO1B1 Recombinant Matched Antibody Pair, PBS Only. Capture antibody: 83054-1-PBS. Detection antibody: 83054-3-PBS. Standard: SY00964. Range: 0.312-20 ng/mL.



Cytometric bead array standard curve of MP00051-2, SLCO1B1 Recombinant Matched Antibody Pair, PBS Only. Capture antibody: 83054-4-PBS. Detection antibody: 83054-3-PBS. Standard: SY00964. Range: 0.312-10 ng/mL.



Cytometric bead array standard curve of MP00051-3, SLCO1B1 Recombinant Matched Antibody Pair, PBS Only. Capture antibody: 83054-2-PBS. Detection antibody: 83054-3-PBS. Standard: SY00964. Range: 0.312-20 ng/mL.