

For Research Use Only

EPOR Recombinant antibody, PBS Only (Capture)

Catalog Number: 83056-4-PBS



Basic Information

Catalog Number: 83056-4-PBS	GenBank Accession Number: NM_000121.4	Purification Method: Protein A purification
Size: 100ug, Concentration: 1mg/ml by Nanodrop;	GeneID (NCBI): 2057	CloneNo.: 230117G3
Source: Rabbit	UNIPROT ID: P19235	
Isotype: IgG	Full Name: erythropoietin receptor	
Immunogen Catalog Number: AG33956	Calculated MW: 55 kDa	

Applications

Tested Applications:
IF/ICC, Sandwich ELISA, Indirect ELISA

Species Specificity:
human

Product Information

83056-4-PBS targets EPOR as part of a matched antibody pair:

MP00065-1: 83056-4-PBS capture and 83056-3-PBS detection (validated in Sandwich ELISA)

Unconjugated rabbit recombinant monoclonal antibody in PBS only (BSA and azide free) storage buffer at a concentration of 1 mg/mL, ready for conjugation. Created using Proteintech's proprietary in-house recombinant technology. Recombinant production enables unrivalled batch-to-batch consistency, easy scale-up, and future security of supply.

This conjugation ready format makes antibodies ideal for use in many applications including: ELISAs, multiplex assays requiring matched pairs, mass cytometry, and multiplex imaging applications. Antibody use should be optimized by the end user for each application and assay.

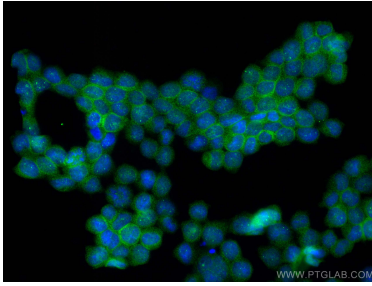
Storage

Storage:
Store at -80°C.
Storage Buffer:
100% PBS pH 7.3

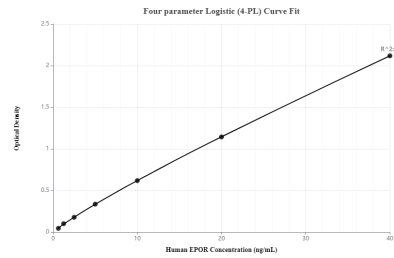
For technical support and original validation data for this product please contact:
T: 1 (888) 4PTGLAB (1-888-478-4522) (toll free in USA), or 1(312) 455-8498 (outside USA)
E: proteintech@ptglab.com
W: ptglab.com

This product is exclusively available under Proteintech Group brand and is not available to purchase from any other manufacturer.

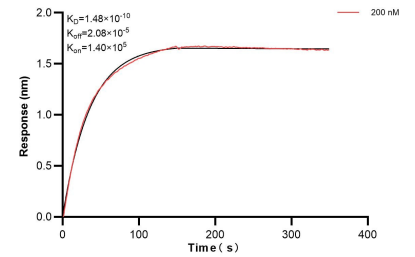
Selected Validation Data



Immunofluorescent analysis of (4% PFA) fixed TF-1 cells using EPOR antibody (83056-4-RR, Clone: 230117G3) at dilution of 1:1000 and CoraLite®488-Conjugated AffiniPure Goat Anti-Rabbit IgG(H+L) (SA00013-2). This data was developed using the same antibody clone with 83056-4-PBS in a different storage buffer formulation.



Sandwich ELISA standard curve of MP00065-1, EPOR Recombinant Matched Antibody Pair, PBS Only. Capture antibody: 83056-4-PBS. Detection antibody: 83056-3-PBS. Standard: Ag33956. Range: 0.625-40 ng/mL.



Biolayer interferometry (BLI) kinetic assay of 83056-4-PBS against Human EPOR was performed. The affinity constant is 0.148 nM.