

For Research Use Only

SOX2 Recombinant antibody, PBS Only

Catalog Number: 83059-5-PBS



Basic Information

Catalog Number: 83059-5-PBS	GenBank Accession Number: BC013923	Purification Method: Protein A purification
Size: 100ug , Concentration: 1 mg/ml by Nanodrop;	GeneID (NCBI): 6657	CloneNo.: 230225G1
Source: Rabbit	UNIPROT ID: P48431	
Isotype: IgG	Full Name: SRY (sex determining region Y)-box 2	
Immunogen Catalog Number: AG0612	Calculated MW: 34 kDa	

Applications

Tested Applications:
IF/ICC, Indirect ELISA

Species Specificity:
human

Background Information

Sox2, also known as SRY (sex determining region Y)-box 2, is a transcription factor essential for maintaining self-renewal of undifferentiated ES cells and is one of the key transcription factors used to reprogram mouse and human fibroblasts to a pluripotent state. Sox2 expressed in undifferentiated pluripotent stem cells and germ cells during development. Affinity purified rabbit anti-Sox2 antibody can be used to demonstrate pluripotency of ES and iPS cells. This antibody is a rabbit polyclonal antibody raised against an internal region of human SOX2. a rare undifferentiated cell population that is intermingled with the Bergmann glia of the adult murine cerebellar cortex, expresses the stem cell markers Sox2 and Nestin, and lacks markers of glial or neuronal differentiation. Sox2-expressing neural stem cells in the subgranular zone (SGZ) , a well-known stem cell niche of the adult brain.

Storage

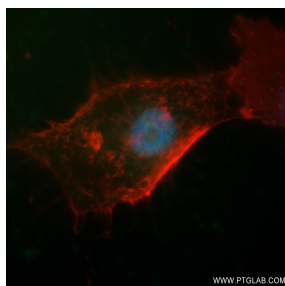
Storage:
Store at -80°C.

Storage Buffer:
PBS Only

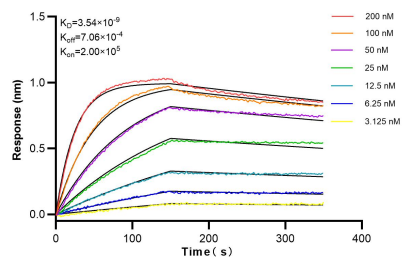
For technical support and original validation data for this product please contact:
T: 1 (888) 4PTGLAB (1-888-478-4522) (toll free in USA), or 1(312) 455-8498 (outside USA)
E: proteintech@ptglab.com
W: ptglab.com

This product is exclusively available under Proteintech Group brand and is not available to purchase from any other manufacturer.

Selected Validation Data



Immunofluorescent analysis of (4% PFA) fixed U-251 cells using SOX2 antibody (83059-5-RR, Clone: 230225G1) at dilution of 1:300 and CoraLite®488-Conjugated Goat Anti-Rabbit IgG(H+L) (SA00013-2).CL594-Phalloidin (red). This data was developed using the same antibody clone with 83059-5-PBS in a different storage buffer formulation.



Biolayer interferometry (BLI) kinetic assays of 83059-5-RR against Human SOX2 were performed. The affinity constant is 3.54 nM.