

For Research Use Only

TRPS1 Recombinant antibody, PBS Only (Capture/Detector)

Catalog Number: 83062-1-PBS



Basic Information

Catalog Number: 83062-1-PBS	GenBank Accession Number: BC125020	Purification Method: Protein A purification
Size: 100ug, Concentration: 1mg/ml by Nanodrop;	GeneID (NCBI): 7227	CloneNo.: 230051F11
Source: Rabbit	UNIPROT ID: Q9UHF7	Affinity: $K_D = 5.92 \times 10^{-10}M$
Isotype: IgG	Full Name: trichorhinophalangeal syndrome I	$K_{Off} = 1.98 \times 10^{-4}M$
Immunogen Catalog Number: AG33959	Calculated MW: 1294 aa, 143 kDa	$K_{On} = 3.35 \times 10^5M$

Applications

Tested Applications:
Cytometric bead array, Sandwich ELISA, Indirect ELISA, Sample test

Species Specificity:
human

Product Information

83062-1-PBS targets TRPS1 as part of a matched antibody pair:

MP00096-1: 83062-1-PBS capture and 83062-3-PBS detection (validated in Cytometric bead array, Sandwich ELISA)

MP00096-2: 83062-2-PBS capture and 83062-1-PBS detection (validated in Cytometric bead array)

Unconjugated rabbit recombinant monoclonal antibody in PBS only (BSA and azide free) storage buffer at a concentration of 1 mg/mL, ready for conjugation. Created using Proteintech's proprietary in-house recombinant technology. Recombinant production enables unrivalled batch-to-batch consistency, easy scale-up, and future security of supply.

This conjugation ready format makes antibodies ideal for use in many applications including: ELISAs, multiplex assays requiring matched pairs, mass cytometry, and multiplex imaging applications. Antibody use should be optimized by the end user for each application and assay.

Storage

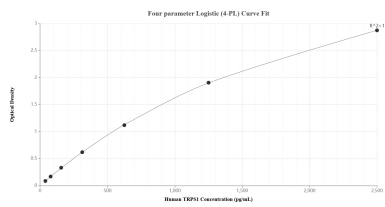
Storage:
Store at -80°C.

Storage Buffer:
100% PBS pH 7.3

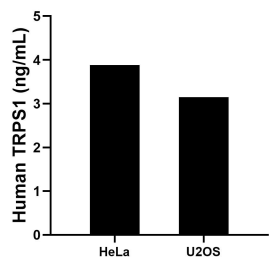
For technical support and original validation data for this product please contact:
T: 1 (888) 4PTGLAB (1-888-478-4522) (toll free in USA), or 1(312) 455-8498 (outside USA)
E: proteintech@ptglab.com
W: ptglab.com

This product is exclusively available under Proteintech Group brand and is not available to purchase from any other manufacturer.

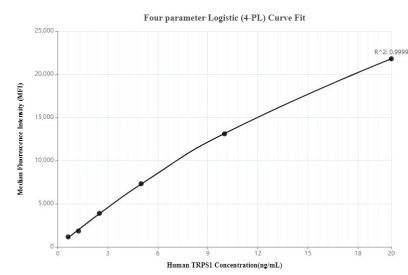
Selected Validation Data



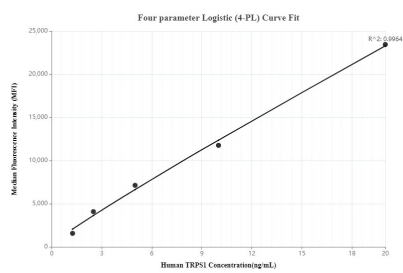
Sandwich ELISA standard curve of MP00096-1, Human TRPS1 Recombinant Matched Antibody Pair - PBS only. 83062-1-PBS was coated to a plate as the capture antibody and incubated with serial dilutions of standard Ag33959. 83062-3-PBS was HRP conjugated as the detection antibody. Range: 39.1-2500 pg/mL.



The mean TRPS1 concentration was determined to be 3.9 ng/mL in HeLa cell extract based on a 1.0 mg/mL extract load and 3.2 ng/mL in U2OS cell extract based on a 3.5 mg/mL extract load.



Cytometric bead array standard curve of MP00096-1, TRPS1 Recombinant Matched Antibody Pair - PBS only. Capture antibody: 83062-1-PBS. Detection antibody: 83062-3-PBS. Standard: Ag33959. Range: 0.625-20 ng/mL.



Cytometric bead array standard curve of MP00096-2, TRPS1 Recombinant Matched Antibody Pair - PBS only. Capture antibody: 83062-2-PBS. Detection antibody: 83062-1-PBS. Standard: Ag33959. Range: 1.25-20 ng/mL.