

For Research Use Only

# Mouse KIM-1/HAVCR1 Recombinant antibody, PBS Only (Capture)



Catalog Number: 83064-4-PBS

## Basic Information

<b>Catalog Number:</b> 83064-4-PBS	<b>GenBank Accession Number:</b> NM_134248	<b>Purification Method:</b> Protein A purification
<b>Size:</b> 100ug , Concentration: 1 mg/ml by Nanodrop;	<b>GeneID (NCBI):</b> 171283	<b>CloneNo.:</b> 230336D12
<b>Source:</b> Rabbit	<b>UNIPROT ID:</b> Q5QNS5	
<b>Isotype:</b> IgG	<b>Full Name:</b> hepatitis A virus cellular receptor 1	
	<b>Calculated MW:</b> 33 kDa	

## Applications

**Tested Applications:**  
Cytometric bead array, Sandwich ELISA, Indirect ELISA, Sample test

**Species Specificity:**  
mouse

## Product Information

83064-4-PBS targets KIM-1/HAVCR1 as part of a matched antibody pair:

MP00116-3: 83064-4-PBS capture and 83064-5-PBS detection (validated in Cytometric bead array, Sandwich ELISA)

Unconjugated rabbit recombinant monoclonal antibody in PBS only (BSA and azide free) storage buffer at a concentration of 1 mg/mL, ready for conjugation. Created using Proteintech's proprietary in-house recombinant technology. Recombinant production enables unrivalled batch-to-batch consistency, easy scale-up, and future security of supply.

This conjugation ready format makes antibodies ideal for use in many applications including: ELISAs, multiplex assays requiring matched pairs, mass cytometry, and multiplex imaging applications. Antibody use should be optimized by the end user for each application and assay.

## Storage

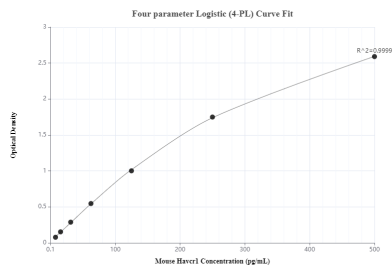
**Storage:**  
Store at -80°C.

**Storage Buffer:**  
100% PBS pH 7.3

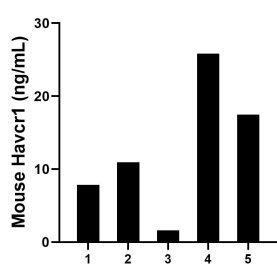
For technical support and original validation data for this product please contact:  
T: 1 (888) 4PTGLAB (1-888-478-4522) (toll free in USA), or 1(312) 455-8498 (outside USA)  
E: [proteintech@ptglab.com](mailto:proteintech@ptglab.com)  
W: [ptglab.com](http://ptglab.com)

This product is exclusively available under Proteintech Group brand and is not available to purchase from any other manufacturer.

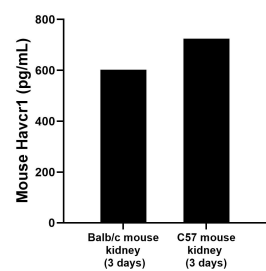
Selected Validation Data



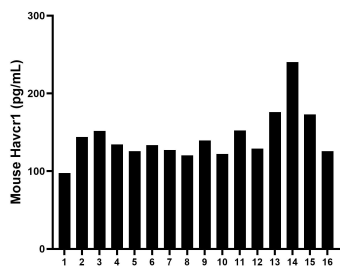
Sandwich ELISA standard curve of MP00116-3, Mouse KIM-1/HAVCR1 Recombinant Matched Antibody Pair - PBS only. 83064-4-PBS was coated to a plate as the capture antibody and incubated with serial dilutions of standard Eg0571. 83064-5-PBS. was HRP conjugated as the detection antibody. Range: 0.625-10 ng/mL



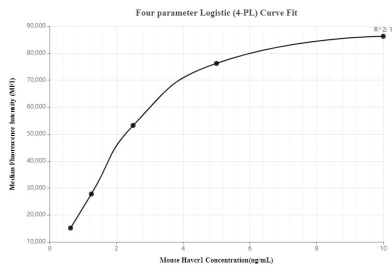
Urine of five mice was measured. The Havcr1 concentration of detected samples was determined to be 12.73 ng/mL with a range of 1.61-25.85 ng/mL



Kidneys from mice were removed, rinsed in 1X PBS, and kept on ice in 1X PBS. Kidneys were then homogenized using a tissue homogenizer and seeded into media containing RPMI-1640 supplemented with 10% fetal bovine serum, 2 mM L-glutamine, 100 U/mL penicillin, and 100 mg/mL streptomycin sulfate. Cells were cultured for the times indicated. The mean Havcr1 concentration was determined to be 602.5 pg/mL in Balb/c mouse kidney, 724.5 pg/mL



Serum of sixteen mice was measured. The Havcr1 concentration of detected samples was determined to be 143.31 pg/mL with a range of 97.69-240.45 pg/mL



Cytometric bead array standard curve of MP00116-3, Mouse KIM-1/HAVCR1 Recombinant Matched Antibody Pair, PBS Only. Capture antibody: 83064-4-PBS. Detection antibody: 83064-5-PBS. Standard: Eg0571. Range: 0.625-10 ng/mL