

For Research Use Only

ECM1 Recombinant antibody

Catalog Number: 83067-6-RR

Featured Product



Basic Information

Catalog Number:

83067-6-RR

Size:

100ul, Concentration: 1000 ug/ml by Nanodrop;

Source:

Rabbit

Isotype:

IgG

GenBank Accession Number:

BC023505

GeneID (NCBI):

1893

UNIPROT ID:

Q16610

Full Name:

extracellular matrix protein 1

Calculated MW:

540 aa, 61 kDa

Observed MW:

60-80 kDa

Purification Method:

Protein A purification

CloneNo.:

230321F12

Recommended Dilutions:

WB 1:5000-1:50000

Applications

Tested Applications:

WB, FC (Intra), ELISA

Species Specificity:

human

Positive Controls:

WB : A375 cells, A431 cells, L02 cells

Background Information

ECM1 (extracellular matrix protein 1), also known as URBWD. It is located in secreted, extracellular space, and extracellular matrix, which is mainly expressed in esophagus and gall bladder. The gene encodes a soluble protein that is involved in endochondral bone formation, angiogenesis, and tumor biology. It also interacts with a variety of extracellular and structural proteins, contributing to the maintenance of skin integrity and homeostasis. Mutations in this gene are associated with lipoid proteinosis disorder (also known as hyalinosis cutis et mucosae or Urbach-Wiethe disease) that is characterized by generalized thickening of skin, mucosae and certain viscera. The calculated molecular weight of ECM1 is 60 kDa, and this antibody can recognize the 63 kDa isoform of target, moreover, this protein may have glycosylation modification.

Storage

Storage:

Store at -20°C. Stable for one year after shipment.

Storage Buffer:

PBS with 0.02% sodium azide and 50% glycerol pH 7.3.

Aliquoting is unnecessary for -20°C storage

*** 20ul sizes contain 0.1% BSA

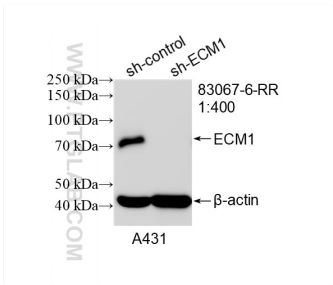
For technical support and original validation data for this product please contact:

T: 1 (888) 4PTGLAB (1-888-478-4522) (toll free in USA), or 1(312) 455-8498 (outside USA)

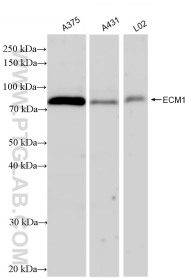
E: proteintech@ptglab.com
W: ptglab.com

This product is exclusively available under Proteintech Group brand and is not available to purchase from any other manufacturer.

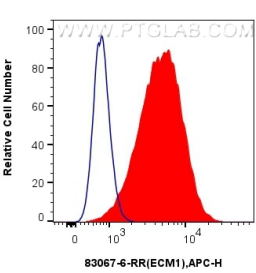
Selected Validation Data



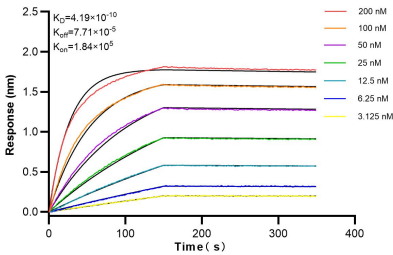
WB result of ECM1 antibody (83067-6-RR; 1:400; incubated at room temperature for 1.5 hours) with sh-Control and sh-ECM1 transfected A431 cells.



Various lysates were subjected to SDS PAGE followed by western blot with 83067-6-RR (ECM1 antibody) at dilution of 1:10000 incubated at room temperature for 1.5 hours.



1x10⁶ A375 cells were intracellularly stained with 0.25 ug Anti-Human ECM1 (83067-6-RR, Clone:230321F12) and APC-Conjugated AffiniPure Goat Anti-Rabbit IgG(H+L)(red), or 0.25 ug Rabbit IgG control Rabbit PolyAb (30000-O-AP) (blue). Cells were fixed with 4% PFA and permeabilized with Flow Cytometry Perm Buffer (PF00011-C).



Biolayer interferometry (BLI) kinetic assays of 83067-6-RR against Human ECM1 were performed. The affinity constant is 0.419 nM.