

# LCMT2 Recombinant antibody, PBS Only (Detector)

Catalog Number: 83073-2-PBS

## Basic Information

|   |   |   |
|---|---|---|
| <b>Catalog Number:</b><br>83073-2-PBS                     | <b>GenBank Accession Number:</b><br>BC015949              | <b>Purification Method:</b><br>Protein A purification |
| <b>Size:</b><br>100ug, Concentration: 1mg/ml by Nanodrop; | <b>GeneID (NCBI):</b><br>9836                             | <b>CloneNo.:</b><br>230405H8                          |
| <b>Source:</b><br>Rabbit                                  | <b>UNIPROT ID:</b><br>O60294                              |   |
| <b>Isotype:</b><br>IgG                                    | <b>Full Name:</b><br>leucine carboxyl methyltransferase 2 |   |
| <b>Immunogen Catalog Number:</b><br>AG11145               | <b>Calculated MW:</b><br>aa, 76 kDa                       |   |

## Applications

**Tested Applications:**  
Cytometric bead array, Indirect ELISA, IF/ICC

**Species Specificity:**  
human

## Product Information

83073-2-PBS targets LCMT2 as part of a matched antibody pair:

MP00060-1: 83073-1-PBS capture and 83073-2-PBS detection (validated in Cytometric bead array)

Unconjugated rabbit recombinant monoclonal antibody in PBS only (BSA and azide free) storage buffer at a concentration of 1 mg/mL, ready for conjugation. Created using Proteintech's proprietary in-house recombinant technology. Recombinant production enables unrivalled batch-to-batch consistency, easy scale-up, and future security of supply.

This conjugation ready format makes antibodies ideal for use in many applications including: ELISAs, multiplex assays requiring matched pairs, mass cytometry, and multiplex imaging applications. Antibody use should be optimized by the end user for each application and assay.

## Storage

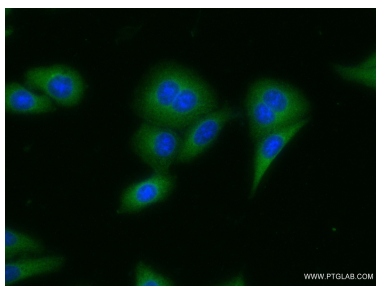
**Storage:**  
Store at -80°C.

**Storage Buffer:**  
100% PBS pH 7.3

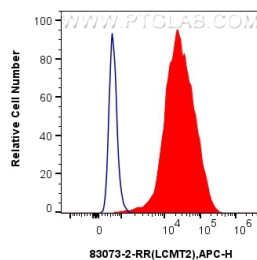
For technical support and original validation data for this product please contact:  
T: 1 (888) 4PTGLAB (1-888-478-4522) (toll free in USA), or 1(312) 455-8498 (outside USA)  
E: [proteintech@ptglab.com](mailto:proteintech@ptglab.com)  
W: [ptglab.com](http://ptglab.com)

This product is exclusively available under Proteintech Group brand and is not available to purchase from any other manufacturer.

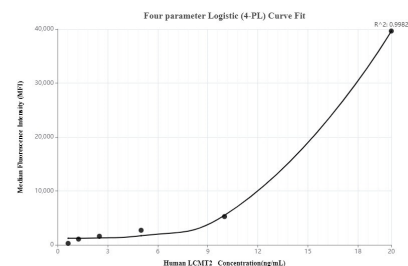
## Selected Validation Data



Immunofluorescent analysis of (-20°C Ethanol) fixed HepG2 cells using LCMT2 antibody (83073-2-RR, Clone: 230405H8 ) at dilution of 1:200 and CoraLite®488-Conjugated AffiniPure Goat Anti-Rabbit IgG(H+L) (SA00013-2). This data was developed using the same antibody clone with 83073-2-PBS in a different storage buffer formulation.



1x10<sup>6</sup> HeLa cells were intracellularly stained with 0.25 ug LCMT2 Recombinant antibody (83073-2-RR, Clone:230405H8) and APC-Conjugated AffiniPure Goat Anti-Rabbit IgG(H+L)(red), or 0.25 ug Isotype Control (blue). Cells were fixed with 4% PFA and permeabilized with Flow Cytometry Perm Buffer (PF00011-C). This data was developed using the same antibody clone with 83073-2-PBS in a different storage buffer formulation.



Cytometric bead array standard curve of MP00060-1, LCMT2 Recombinant Matched Antibody Pair, PBS Only. Capture antibody: 83073-1-PBS. Detection antibody: 83073-2-PBS. Standard: Ag11145. Range: 0.625-20 ng/mL.