

For Research Use Only

SLC4A9 Recombinant antibody, PBS Only (Capture/Detector)



Catalog Number: 83076-3-PBS

Basic Information

Catalog Number: 83076-3-PBS	GenBank Accession Number: NM_001258428	Purification Method: Protein A purification
Size: 100ug , Concentration: 1mg/ml by Nanodrop;	GeneID (NCBI): 83697	CloneNo.: 230419H5
Source: Rabbit	UNIPROT ID: Q96Q91	
Isotype: IgG	Full Name: solute carrier family 4, sodium bicarbonate cotransporter, member 9	
Immunogen Catalog Number: AG34492	Calculated MW: 983 aa, 108 kDa	

Applications

Tested Applications:
Indirect ELISA, Cytometric bead array

Species Specificity:
Human

Product Information

83076-3-PBS targets SLC4A9 as part of a matched antibody pair:

MP00073-1: 83076-2-PBS capture and 83076-3-PBS detection (validated in Cytometric bead array)

MP00073-2: 83076-3-PBS capture and 83076-1-PBS detection (validated in Cytometric bead array)

Unconjugated rabbit recombinant monoclonal antibody in PBS only (BSA and azide free) storage buffer at a concentration of 1 mg/mL, ready for conjugation. Created using Proteintech's proprietary in-house recombinant technology. Recombinant production enables unrivalled batch-to-batch consistency, easy scale-up, and future security of supply.

This conjugation ready format makes antibodies ideal for use in many applications including: ELISAs, multiplex assays requiring matched pairs, mass cytometry, and multiplex imaging applications. Antibody use should be optimized by the end user for each application and assay.

Storage

Storage:
Store at -80°C.
Storage Buffer:
100% PBS pH 7.3

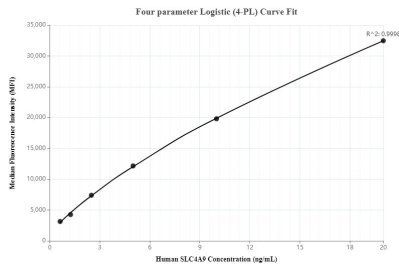
For technical support and original validation data for this product please contact:

T: 1 (888) 4PTGLAB (1-888-478-4522) (toll free in USA), or 1(312) 455-8498 (outside USA)

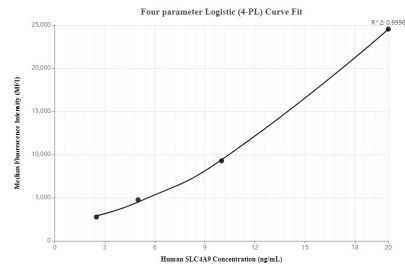
E: proteintech@ptglab.com
W: ptglab.com

This product is exclusively available under Proteintech Group brand and is not available to purchase from any other manufacturer.

Selected Validation Data



Cytometric bead array standard curve of MP00073-1, SLC4A9 Recombinant Matched Antibody Pair, PBS Only. Capture antibody: 83076-2-PBS. Detection antibody: 83076-3-PBS. Standard: Ag34492. Range: 0.625-20 ng/mL



Cytometric bead array standard curve of MP00073-2, SLC4A9 Recombinant Matched Antibody Pair, PBS Only. Capture antibody: 83076-3-PBS. Detection antibody: 83076-1-PBS. Standard: Ag34492. Range: 2.5-20 ng/mL