

For Research Use Only

COPA Recombinant antibody, PBS Only

Catalog Number: 83089-1-PBS



Basic Information

Catalog Number:

83089-1-PBS

Size:

100ug , Concentration: 1mg/ml by Nanodrop;

Source:

Rabbit

Isotype:

IgG

Immunogen Catalog Number:

AG34207

GenBank Accession Number:

NM_004371

GeneID (NCBI):

1314

UNIPROT ID:

P53621

Full Name:

coatamer protein complex, subunit alpha

Calculated MW:

138 kDa

Observed MW:

150 kDa

Purification Method:

Protein A purification

CloneNo.:

230361G2

Applications

Tested Applications:

WB, IHC, IF/ICC, FC (Intra), Indirect ELISA

Species Specificity:

human, mouse

Background Information

COPA, also named HEP-COP and Alpha-COP, is coatamer subunit alpha. The coatamer is a cytosolic protein complex that binds to dilysine motifs and reversibly associates with Golgi non-clathrin-coated vesicles, which further mediate biosynthetic protein transport from the ER, via the Golgi up to the trans Golgi network. Coatamer complex is required for budding from Golgi membranes, and is essential for the retrograde Golgi-to-ER transport of dilysine-tagged proteins.

Storage

Storage:

Store at -80°C.

Storage Buffer:

PBS Only

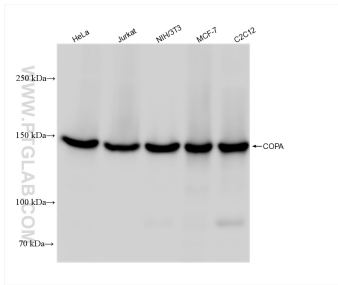
For technical support and original validation data for this product please contact:

T: 1 (888) 4PTGLAB (1-888-478-4522) (toll free in USA), or 1(312) 455-8498 (outside USA)

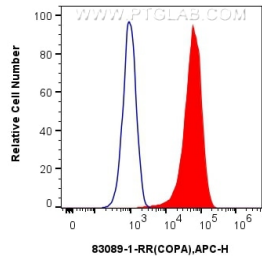
E: proteintech@ptglab.com
W: ptglab.com

This product is exclusively available under Proteintech Group brand and is not available to purchase from any other manufacturer.

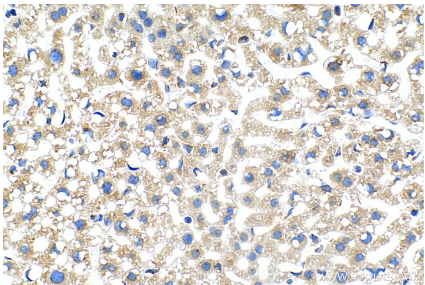
Selected Validation Data



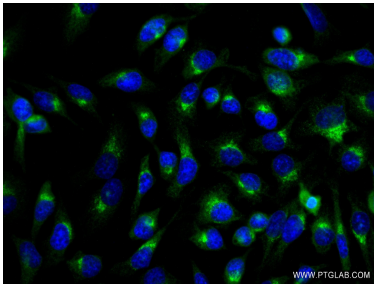
Various lysates were subjected to SDS PAGE followed by western blot with 83089-1-RR (COPA antibody) at dilution of 1:5000 incubated at room temperature for 1.5 hours. This data was developed using the same antibody clone with 83089-1-PBS in a different storage buffer formulation.



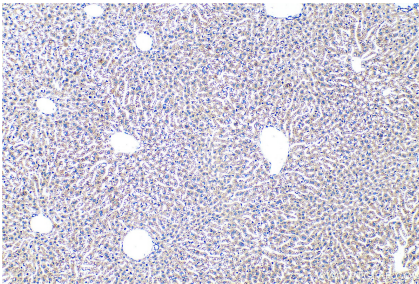
1x10⁶ HeLa cells were intracellularly stained with 0.25 ug Anti-Human COPA (83089-1-RR, Clone:230361G2) and APC-Conjugated AffiniPure Goat Anti-Rabbit IgG(H+L) (red), or 0.25 ug Rabbit IgG control Rabbit PolyAb (30000-O-AP) (blue). Cells were fixed with 4% PFA and permeabilized with Flow Cytometry Perm Buffer (PF00011-C). This data was developed using the same antibody clone with 83089-1-PBS in a different storage buffer formulation.



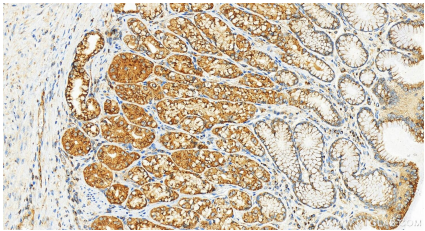
Immunohistochemical analysis of paraffin-embedded mouse liver tissue slide using 83089-1-RR (COPA antibody) at dilution of 1:500 (under 40x lens). Heat mediated antigen retrieval with Tris-EDTA buffer (pH 9.0). This data was developed using the same antibody clone with 83089-1-PBS in a different storage buffer formulation.



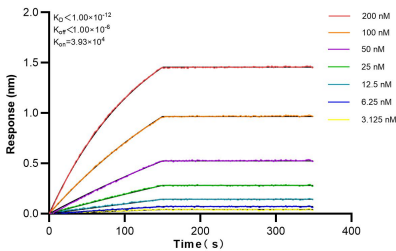
Immunofluorescent analysis of (-20°C Ethanol) fixed HeLa cells using COPA antibody (83089-1-RR, Clone: 230361G2) at dilution of 1:250 and CoraLite®488-Conjugated AffiniPure Goat Anti-Rabbit IgG(H+L) (SA00013-2). This data was developed using the same antibody clone with 83089-1-PBS in a different storage buffer formulation.



Immunohistochemical analysis of paraffin-embedded mouse liver tissue slide using 83089-1-RR (COPA antibody) at dilution of 1:500 (under 10x lens). Heat mediated antigen retrieval with Tris-EDTA buffer (pH 9.0). This data was developed using the same antibody clone with 83089-1-PBS in a different storage buffer formulation.



Immunohistochemical analysis of paraffin-embedded human normal stomach slide using 83089-1-RR (COPA antibody) at dilution of 1:1000 (under 20x lens). Heat mediated antigen retrieval with Tris-EDTA buffer (pH 9.0). This data was developed using the same antibody clone with 83089-1-PBS in a different storage buffer formulation.



Biolayer interferometry (BLI) kinetic assays of 83089-1-RR against Human COPA were performed. The affinity constant is below 1 pM.