

SHBG Recombinant antibody, PBS Only (Detector)

Catalog Number: 83096-1-PBS

Basic Information

Catalog Number: 83096-1-PBS	GenBank Accession Number: BC101785	Purification Method: Protein A purification
Size: 100ug , Concentration: 1mg/ml by Nanodrop;	GeneID (NCBI): 6462	CloneNo.: 230356F10
Source: Rabbit	UNIPROT ID: P04278	
Isotype: IgG	Full Name: sex hormone-binding globulin	
	Calculated MW: 402 aa, 44 kDa	

Applications

Tested Applications:
Cytometric bead array, Indirect ELISA, WB

Species Specificity:
human

Product Information

83096-1-PBS targets SHBG as part of a matched antibody pair:

MP80006-1: 68835-1-PBS capture and 83096-1-PBS detection (validated in Cytometric bead array)

Unconjugated rabbit recombinant monoclonal antibody in PBS only (BSA and azide free) storage buffer at a concentration of 1 mg/mL, ready for conjugation. Created using Proteintech's proprietary in-house recombinant technology. Recombinant production enables unrivalled batch-to-batch consistency, easy scale-up, and future security of supply.

This conjugation ready format makes antibodies ideal for use in many applications including: ELISAs, multiplex assays requiring matched pairs, mass cytometry, and multiplex imaging applications. Antibody use should be optimized by the end user for each application and assay.

Storage

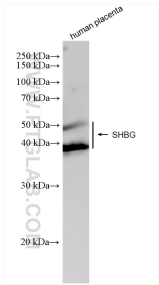
Storage:
Store at -80°C.

Storage Buffer:
PBS Only

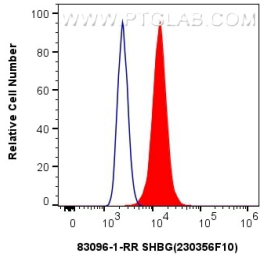
For technical support and original validation data for this product please contact:
T: 1 (888) 4PTGLAB (1-888-478-4522) (toll free in USA), or 1(312) 455-8498 (outside USA)
E: proteintech@ptglab.com
W: ptglab.com

This product is exclusively available under Proteintech Group brand and is not available to purchase from any other manufacturer.

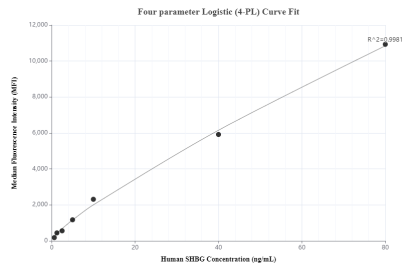
Selected Validation Data



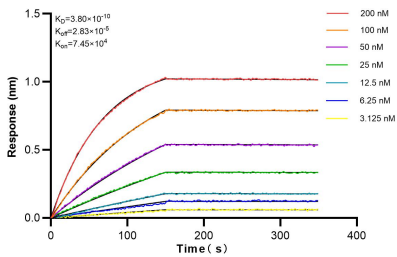
human placenta tissue were subjected to SDS PAGE followed by western blot with 83096-1-RR (SHBG antibody) at dilution of 1:1000 incubated at room temperature for 1.5 hours. This data was developed using the same antibody clone with 83096-1-PBS in a different storage buffer formulation.



1x10⁶ HeLa cells were intracellularly stained with 0.25 ug SHBG Recombinant antibody (83096-1-RR, Clone:230356F10) and CoraLite®488-Conjugated AffiniPure Goat Anti-Rabbit IgG(H+L) (SA00013-2) (red), or 0.25 ug Isotype Control (blue). Cells were fixed with 4% PFA and permeabilized with Flow Cytometry Perm Buffer (PF00011-C). This data was developed using the same antibody clone with 83096-1-PBS in a different storage buffer formulation.



Cytometric bead array standard curve of MP80006-1, SHBG Hybrid Matched Antibody Pair, PBS Only. Capture antibody: 68835-1-PBS. Detection antibody: 83096-1-PBS. Standard: Eg0369. Range: 0.625-80 ng/mL.



Biolayer interferometry (BLI) kinetic assays of 83096-1-RR against Human SHBG were performed. The affinity constant is 0.38 nM.