

For Research Use Only

# NEDD4 Recombinant antibody

Catalog Number: 83112-1-RR



## Basic Information

<b>Catalog Number:</b> 83112-1-RR	<b>GenBank Accession Number:</b> BC152452	<b>Purification Method:</b> Protein A purification
<b>Size:</b> 100ul , Concentration: 1000 ug/ml by Nanodrop;	<b>GeneID (NCBI):</b> 4734	<b>CloneNo.:</b> 230478F1
<b>Source:</b> Rabbit	<b>UNIPROT ID:</b> P46934	<b>Recommended Dilutions:</b> WB 1:1000-1:5000 IP 0.5-4.0 ug for 1.0-3.0 mg of total protein lysate IF/ICC 1:50-1:500
<b>Isotype:</b> IgG	<b>Full Name:</b> neural precursor cell expressed, developmentally down-regulated 4	
<b>Immunogen Catalog Number:</b> AG16291	<b>Calculated MW:</b> 1319 aa, 149 kDa	
	<b>Observed MW:</b> 115 kDa	

## Applications

<b>Tested Applications:</b> WB, IF/ICC, IP, ELISA	<b>Positive Controls:</b>
<b>Species Specificity:</b> human, mouse, rat	<b>WB :</b> C6 cells, NIH/3T3 cells <b>IP :</b> NIH/3T3 cells, <b>IF/ICC :</b> U2OS cells,

## Background Information

NEDD4 and similar proteins discovered subsequently became a family of HECT ligases, comprising 9 human proteins including NEDD4, NEDD4-2 (NEDD4L), ITCH, SMURF1, SMURF2, WWP1, WWP2, NEDL1 and NEDL2. NEDD4 is a highly evolutionarily conserved protein from yeast to man, and was initially cloned as a highly expressed gene in the early embryonic brain. NEDD4 is frequently overexpressed in many different types of cancer, and decreased levels of NEDD4 can also be associated with cancer. It can be a potential therapeutic target for the treatment of human cancer. (PMID: 25527121). The human NEDD4 gene is located on chromosome 15q21.3 and comprises 30 exons (HGNC:7727) shown to encode a ~120 kDa protein. Otherwise there is a 75 kDa isoform in addition to full length NEDD4 (PMID: 24907641).

## Storage

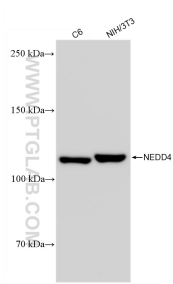
**Storage:**  
Store at -20°C. Stable for one year after shipment.  
**Storage Buffer:**  
PBS with 0.02% sodium azide and 50% glycerol pH 7.3.  
**Aliquoting is unnecessary for -20°C storage**

\*\*\* 20ul sizes contain 0.1% BSA

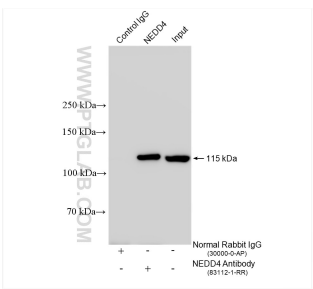
For technical support and original validation data for this product please contact:  
T: 1 (888) 4PTGLAB (1-888-478-4522) (toll free in USA), or 1(312) 455-8498 (outside USA)  
E: proteintech@ptglab.com  
W: ptglab.com

This product is exclusively available under Proteintech Group brand and is not available to purchase from any other manufacturer.

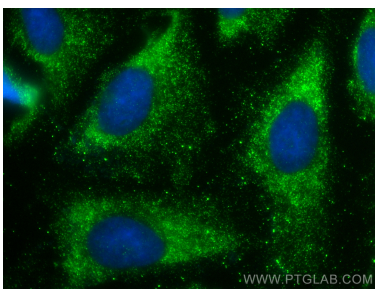
Selected Validation Data



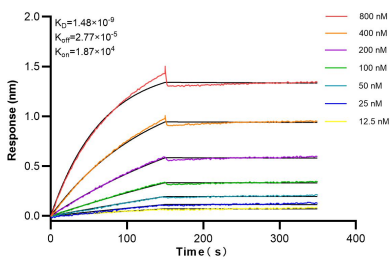
Various lysates were subjected to SDS PAGE followed by western blot with 83112-1-RR (NEDD4 antibody) at dilution of 1:5000 incubated at room temperature for 1.5 hours.



IP result of anti-NEDD4 (IP:83112-1-RR, 4ug; Detection:83112-1-RR 1:1000) with NIH/3T3 cells lysate 1505 ug.



Immunofluorescent analysis of (-20°C Ethanol) fixed U2OS cells using NEDD4 antibody (83112-1-RR, Clone: 230478F1 ) at dilution of 1:100 and Multi-rAb CoraLite ® Plus 488-Goat Anti-Rabbit Recombinant Secondary Antibody (H+L) (RGAR002).



Biolayer interferometry (BLI) kinetic assays of 83112-1-RR against Human NEDD4 were performed. The affinity constant is 14.8 nM.