

For Research Use Only

# MMP1 Recombinant antibody, PBS Only (Detector)

Catalog Number: 83114-3-PBS



## Basic Information

<b>Catalog Number:</b> 83114-3-PBS	<b>GenBank Accession Number:</b> BC013875	<b>Purification Method:</b> Protein A purification
<b>Size:</b> 100ug , Concentration: 1mg/ml by Nanodrop;	<b>GeneID (NCBI):</b> 4312	<b>CloneNo.:</b> 230343B6
<b>Source:</b> Rabbit	<b>UNIPROT ID:</b> P03956	
<b>Isotype:</b> IgG	<b>Full Name:</b> matrix metalloproteinase 1 (interstitial collagenase)	
	<b>Calculated MW:</b> 54 kDa	

## Applications

**Tested Applications:**  
Cytometric bead array, Sandwich ELISA, Indirect ELISA, Sample test

**Species Specificity:**  
human

## Product Information

83114-3-PBS targets MMP1 as part of a matched antibody pair:

MP00290-1: 83114-4-PBS capture and 83114-3-PBS detection (validated in Cytometric bead array, Sandwich ELISA)

Unconjugated rabbit recombinant monoclonal antibody in PBS only (BSA and azide free) storage buffer at a concentration of 1 mg/mL, ready for conjugation. Created using Proteintech's proprietary in-house recombinant technology. Recombinant production enables unrivalled batch-to-batch consistency, easy scale-up, and future security of supply.

This conjugation ready format makes antibodies ideal for use in many applications including: ELISAs, multiplex assays requiring matched pairs, mass cytometry, and multiplex imaging applications. Antibody use should be optimized by the end user for each application and assay.

## Storage

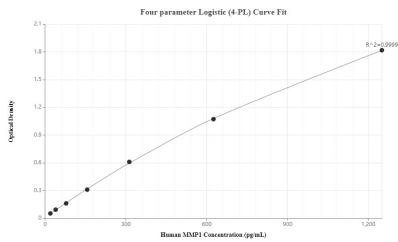
**Storage:**  
Store at -80°C.

**Storage Buffer:**  
PBS only, pH7.3

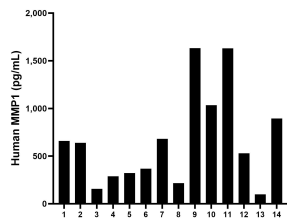
For technical support and original validation data for this product please contact:  
T: 1 (888) 4PTGLAB (1-888-478-4522) (toll free in USA), or 1(312) 455-8498 (outside USA)  
E: [proteintech@ptglab.com](mailto:proteintech@ptglab.com)  
W: [ptglab.com](http://ptglab.com)

This product is exclusively available under Proteintech Group brand and is not available to purchase from any other manufacturer.

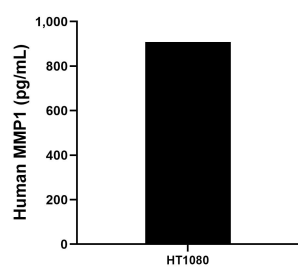
Selected Validation Data



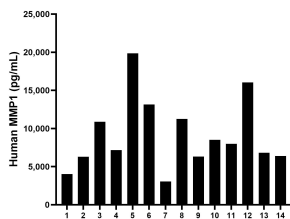
Sandwich ELISA standard curve of MP00290-1, MMP1 Recombinant Matched Antibody Pair, PBS Only. 83114-4-PBS was coated to a plate as the capture antibody and incubated with serial dilutions of standard Eg0527. 83114-3-PBS was HRP conjugated as the detection antibody. Range: 19.5-1250 pg/mL.



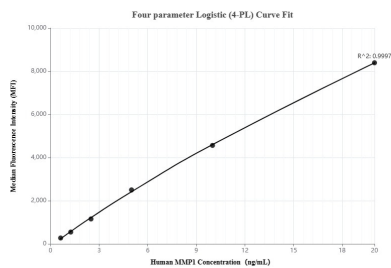
Plasma of fourteen individual healthy human donors were measured. The human MMP1 concentration of detected samples was determined to be 653.4 pg/mL with a range of 99.3 - 1,631.8 pg/mL.



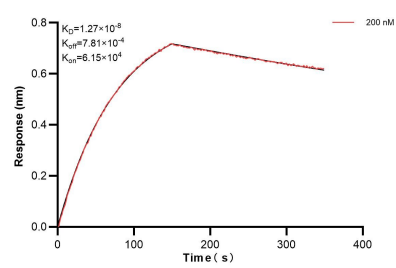
HT1080 were cultured in DMEM supplemented with 10% fetal bovine serum, 2.5 mM L-glutamine, 100 U/mL penicillin, and 100 µg/mL streptomycin sulfate. An aliquot of the cell culture supernate was removed, assayed for human MMP1, and measured 907.5 pg/mL.



Serum of fourteen individual healthy human donors were measured. The human MMP1 concentration of detected samples was determined to be 9,124.3 pg/mL with a range of 3,045.5 - 19,864.3 pg/mL.



Cytometric bead array standard curve of MP00290-1, MMP1 Recombinant Matched Antibody Pair, PBS Only. Capture antibody: 83114-4-PBS. Detection antibody: 83114-3-PBS. Standard: Eg0527. Range: 0.625-20 ng/mL.



Bilayer interferometry (BLI) kinetic assay of 83114-3-PBS against Human MMP1 was performed. The affinity constant is 12.7 nM.