

For Research Use Only

MMP1 Recombinant antibody, PBS Only (Capture)

Catalog Number: 83114-4-PBS



Basic Information

Catalog Number: 83114-4-PBS	GenBank Accession Number: BC013875	Purification Method: Protein A purification
Size: 100ug , Concentration: 1mg/ml by Nanodrop;	GeneID (NCBI): 4312	CloneNo.: 230343C12
Source: Rabbit	UNIPROT ID: P03956	
Isotype: IgG	Full Name: matrix metalloproteinase 1 (interstitial collagenase)	
Immunogen Catalog Number: EG0527	Calculated MW: 54 kDa	

Applications

Tested Applications:
Cytometric bead array, Sandwich ELISA, Indirect ELISA, Sample test

Species Specificity:
human

Product Information

83114-4-PBS targets MMP1 as part of a matched antibody pair:

MP00290-1: 83114-4-PBS capture and 83114-3-PBS detection (validated in Cytometric bead array, Sandwich ELISA)

MP00290-2: 83114-4-PBS capture and 83114-5-PBS detection (validated in Cytometric bead array)

Unconjugated rabbit recombinant monoclonal antibody in PBS only (BSA and azide free) storage buffer at a concentration of 1 mg/mL, ready for conjugation. Created using Proteintech's proprietary in-house recombinant technology. Recombinant production enables unrivalled batch-to-batch consistency, easy scale-up, and future security of supply.

This conjugation ready format makes antibodies ideal for use in many applications including: ELISAs, multiplex assays requiring matched pairs, mass cytometry, and multiplex imaging applications. Antibody use should be optimized by the end user for each application and assay.

Storage

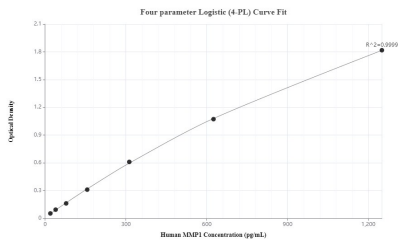
Storage:
Store at -80°C.

Storage Buffer:
PBS only, pH7.3

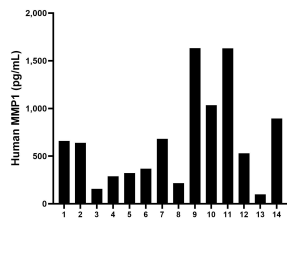
For technical support and original validation data for this product please contact:
T: 1 (888) 4PTGLAB (1-888-478-4522) (toll free in USA), or 1(312) 455-8498 (outside USA)
E: proteintech@ptglab.com
W: ptglab.com

This product is exclusively available under Proteintech Group brand and is not available to purchase from any other manufacturer.

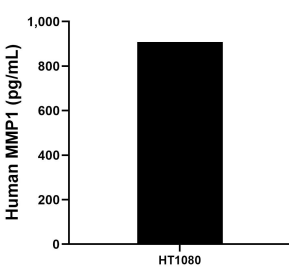
Selected Validation Data



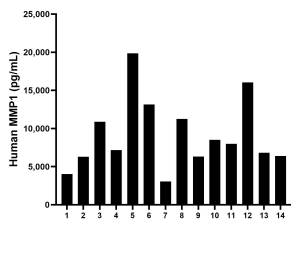
Sandwich ELISA standard curve of MP00290-1, MMP1 Recombinant Matched Antibody Pair, PBS Only. 83114-4-PBS was coated to a plate as the capture antibody and incubated with serial dilutions of standard Eg0527. 83114-3-PBS was HRP conjugated as the detection antibody. Range: 19.5-1250 pg/mL.



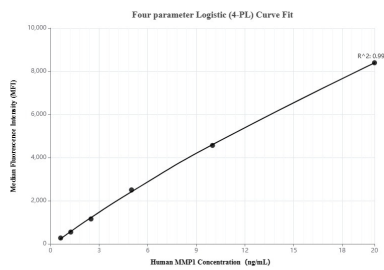
Plasma of fourteen individual healthy human donors were measured. The human MMP1 concentration of detected samples was determined to be 653.4 pg/mL with a range of 99.3 - 1,631.8 pg/mL.



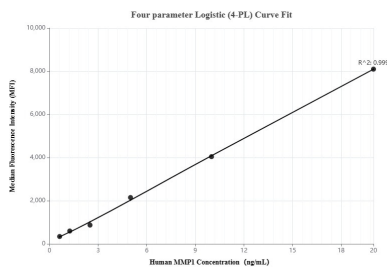
HT1080 were cultured in DMEM supplemented with 10% fetal bovine serum, 2.5 mM L-glutamine, 100 U/mL penicillin, and 100 µg/mL streptomycin sulfate. An aliquot of the cell culture supernate was removed, assayed for human MMP1, and measured 907.5 pg/mL.



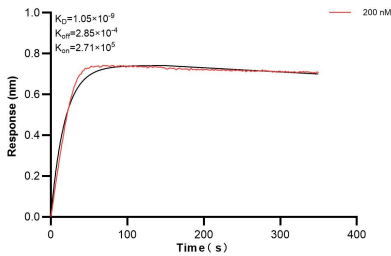
Serum of fourteen individual healthy human donors were measured. The human MMP1 concentration of detected samples was determined to be 9,124.3 pg/mL with a range of 3,045.5 - 19,864.3 pg/mL.



Cytometric bead array standard curve of MP00290-1, MMP1 Recombinant Matched Antibody Pair, PBS Only. Capture antibody: 83114-4-PBS. Detection antibody: 83114-3-PBS. Standard: Eg0527. Range: 0.625-20 ng/mL.



Cytometric bead array standard curve of MP00290-2, MMP1 Recombinant Matched Antibody Pair, PBS Only. Capture antibody: 83114-4-PBS. Detection antibody: 83114-5-PBS. Standard: Eg0527. Range: 0.625-20 ng/mL.



Biolayer interferometry (BLI) kinetic assay of 83114-4-PBS against Human MMP1 was performed. The affinity constant is 1.05 nM.