

For Research Use Only

# NSD3 Recombinant antibody

Catalog Number: 83116-1-RR



## Basic Information

Catalog Number:	GenBank Accession Number:	Purification Method:
83116-1-RR	BC012059	Protein A purification
Size:	GeneID (NCBI):	CloneNo.:
100ul , Concentration: 1000 ug/ml by Nanodrop;	54904	230499C5
Source:	UNIPROT ID:	Recommended Dilutions:
Rabbit	Q9BZ95	IHC 1:200-1:800
Isotype:	Full Name:	IF/ICC 1:200-1:800
IgG	Wolf-Hirschhorn syndrome candidate 1-like 1	
Immunogen Catalog Number:	Calculated MW:	
AG1894	1437 aa, 162 kDa	

## Applications

Tested Applications:	Positive Controls:
IHC, IF/ICC, FC (Intra), ELISA	IHC : human lung squamous cell carcinoma tissue,
Species Specificity:	IF/ICC : MCF-7 cells,
human	
<b>Note-IHC: suggested antigen retrieval with TE buffer pH 9.0; (*) Alternatively, antigen retrieval may be performed with citrate buffer pH 6.0</b>	

## Background Information

WHSC1L1, also named as NSD3 and DC28, belongs to the histone-lysine methyltransferase family and SET2 subfamily. It is histone methyltransferase. WHSC1L1 is a potentially transforming oncogenes based on the number of altered phenotypes expressed by the cells. It contains a PWWP-domain that is a methyl-lysine recognition motif involved in histone code modification and epigenetic regulation of gene expression. Knockdown of WHSC1L1 in 8p11-12-amplified breast cancer cells resulted in profound loss of growth and survival of these cells. (PMID: 20940404).

## Storage

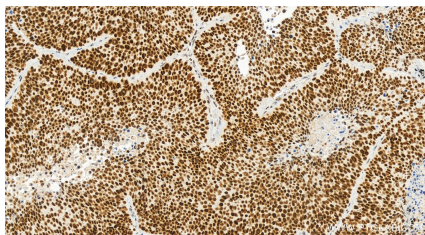
**Storage:**  
Store at -20°C. Stable for one year after shipment.  
**Storage Buffer:**  
PBS with 0.02% sodium azide and 50% glycerol pH 7.3.  
Aliquoting is unnecessary for -20°C storage

\*\*\* 20ul sizes contain 0.1% BSA

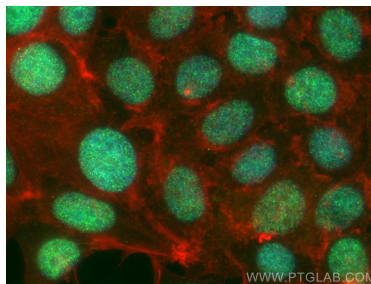
For technical support and original validation data for this product please contact:  
T: 1 (888) 4PTGLAB (1-888-478-4522) (toll free in USA), or 1(312) 455-8498 (outside USA)  
E: [proteintech@ptglab.com](mailto:proteintech@ptglab.com)  
W: [ptglab.com](http://ptglab.com)

This product is exclusively available under Proteintech Group brand and is not available to purchase from any other manufacturer.

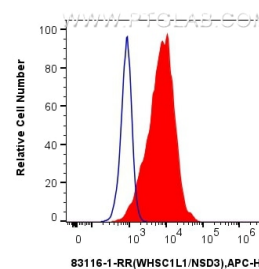
## Selected Validation Data



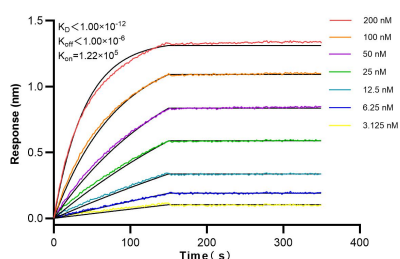
Immunohistochemical analysis of paraffin-embedded human lung squamous cell carcinoma tissue slide using 83116-1-RR (NSD3 antibody) at dilution of 1:400 (under 20x lens). Heat mediated antigen retrieval with Tris-EDTA buffer (pH 9.0).



Immunofluorescent analysis of (4% PFA) fixed MCF-7 cells using NSD3 antibody (83116-1-RR, Clone: 230499C5) at dilution of 1:400 and Multi-rAb CoraLite® Plus 488-Goat Anti-Rabbit Recombinant Secondary Antibody (H+L) (RGAR002), CL594-phalloidin (red).



$1 \times 10^6$  HeLa cells were intracellularly stained with 0.25  $\mu$ g Anti-Human NSD3 (83116-1-RR, Clone: 230499C5) and APC-Conjugated AffiniPure Goat Anti-Rabbit IgG(H+L)(red), or 0.25  $\mu$ g Rabbit IgG control Rabbit PolyAb (30000-O-AP) (blue). Cells were fixed and permeabilized with True-Nuclear Transcription Factor Buffer Set.



Biolayer interferometry (BLI) kinetic assays of 83116-1-RR against Human NSD3 were performed. The affinity constant is below 1 pM.