

For Research Use Only

# WHSC1L1 Recombinant antibody, PBS Only (Detector)

Catalog Number: 83116-5-PBS



## Basic Information

|                                                           |                                                                  |                                                       |
|-----------------------------------------------------------|------------------------------------------------------------------|-------------------------------------------------------|
| <b>Catalog Number:</b><br>83116-5-PBS                     | <b>GenBank Accession Number:</b><br>BC012059                     | <b>Purification Method:</b><br>Protein A purification |
| <b>Size:</b><br>100ug, Concentration: 1mg/ml by Nanodrop; | <b>GeneID (NCBI):</b><br>54904                                   | <b>CloneNo.:</b><br>230499C4                          |
| <b>Source:</b><br>Rabbit                                  | <b>UNIPROT ID:</b><br>Q9BZ95                                     |                                                       |
| <b>Isotype:</b><br>IgG                                    | <b>Full Name:</b><br>Wolf-Hirschhorn syndrome candidate 1-like 1 |                                                       |
| <b>Immunogen Catalog Number:</b><br>AG1894                | <b>Calculated MW:</b><br>1437 aa, 162 kDa                        |                                                       |

## Applications

**Tested Applications:**  
Cytometric bead array, Sandwich ELISA, Indirect ELISA, Sample test

**Species Specificity:**  
human

## Product Information

83116-5-PBS targets WHSC1L1 as part of a matched antibody pair:

MP00189-3: 83116-3-PBS capture and 83116-5-PBS detection (validated in Cytometric bead array)

MP00189-4: 83116-2-PBS capture and 83116-5-PBS detection (validated in Sandwich ELISA)

Unconjugated rabbit recombinant monoclonal antibody in PBS only (BSA and azide free) storage buffer at a concentration of 1 mg/mL, ready for conjugation. Created using Proteintech's proprietary in-house recombinant technology. Recombinant production enables unrivalled batch-to-batch consistency, easy scale-up, and future security of supply.

This conjugation ready format makes antibodies ideal for use in many applications including: ELISAs, multiplex assays requiring matched pairs, mass cytometry, and multiplex imaging applications. Antibody use should be optimized by the end user for each application and assay.

## Storage

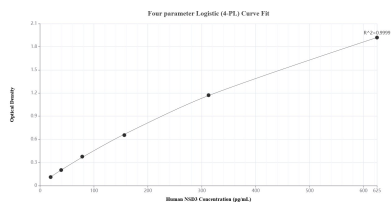
**Storage:**  
Store at -80°C.

**Storage Buffer:**  
PBS Only

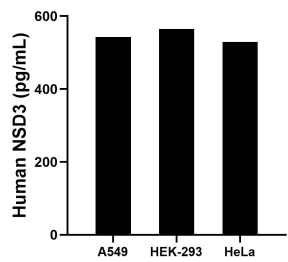
For technical support and original validation data for this product please contact:  
T: 1 (888) 4PTGLAB (1-888-478-4522) (toll free in USA), or 1(312) 455-8498 (outside USA)  
E: [proteintech@ptglab.com](mailto:proteintech@ptglab.com)  
W: [ptglab.com](http://ptglab.com)

This product is exclusively available under Proteintech Group brand and is not available to purchase from any other manufacturer.

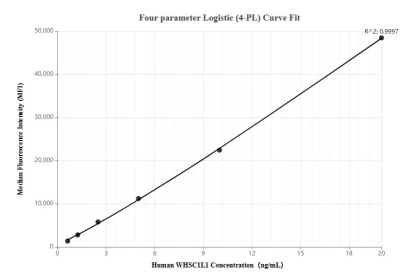
## Selected Validation Data



Sandwich ELISA standard curve of MP00189-4, Human NSD3 Recombinant Matched Antibody Pair - PBS only. 83116-2-PBS was coated to a plate as the capture antibody and incubated with serial dilutions of standard Ag1894. 83116-5-PBS was HRP conjugated as the detection antibody. Range: 19.5-625 pg/mL.



The mean NSD3 concentration was determined to be 542.5 pg/mL in A549 cell extract based on a 1.0 mg/mL extract load, 565.1 pg/mL in HEK-293 cell extract based on a 1.2 mg/mL extract load and 529.6 pg/mL in HeLa cell extract based on a 1.5 mg/mL extract load.



Cytometric bead array standard curve of MP00189-3, WHSC1L1 Recombinant Matched Antibody Pair, PBS Only. Capture antibody: 83116-3-PBS. Detection antibody: 83116-5-PBS. Standard: Ag1894. Range: 0.625-20 ng/mL.