

For Research Use Only

SPTA1 Recombinant antibody, PBS Only (Capture/Detector)

Catalog Number: 83133-4-PBS



Basic Information

Catalog Number: 83133-4-PBS	GenBank Accession Number: NM_003126	Purification Method: Protein A purification
Size: 100ug , Concentration: 1mg/ml by Nanodrop;	GeneID (NCBI): 6708	CloneNo.: 230507G1
Source: Rabbit	UNIPROT ID: P02549	
Isotype: IgG	Full Name: spectrin, alpha, erythrocytic 1 (elliptocytosis 2)	
	Calculated MW: 280 kDa	

Applications

Tested Applications:
Cytometric bead array, Sandwich ELISA, Indirect ELISA, Sample test

Species Specificity:
human

Product Information

83133-4-PBS targets SPTA1 as part of a matched antibody pair:

MP00280-1: 83133-6-PBS capture and 83133-4-PBS detection (validated in Cytometric bead array)

MP00280-3: 83133-4-PBS capture and 83133-6-PBS detection (validated in Sandwich ELISA)

Unconjugated rabbit recombinant monoclonal antibody in PBS only (BSA and azide free) storage buffer at a concentration of 1 mg/mL, ready for conjugation. Created using Proteintech's proprietary in-house recombinant technology. Recombinant production enables unrivalled batch-to-batch consistency, easy scale-up, and future security of supply.

This conjugation ready format makes antibodies ideal for use in many applications including: ELISAs, multiplex assays requiring matched pairs, mass cytometry, and multiplex imaging applications. Antibody use should be optimized by the end user for each application and assay.

Storage

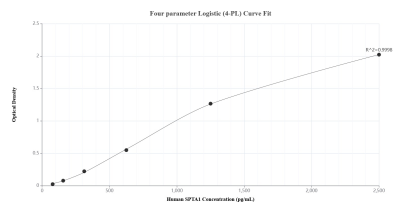
Storage:
Store at -80°C.

Storage Buffer:
PBS Only

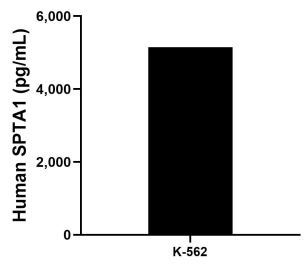
For technical support and original validation data for this product please contact:
T: 1 (888) 4PTGLAB (1-888-478-4522) (toll free in USA), or 1(312) 455-8498 (outside USA)
E: proteintech@ptglab.com
W: ptglab.com

This product is exclusively available under Proteintech Group brand and is not available to purchase from any other manufacturer.

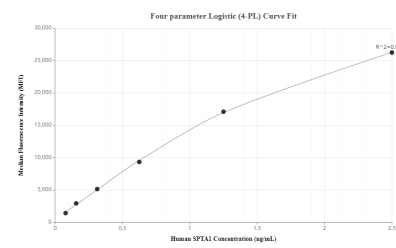
Selected Validation Data



Sandwich ELISA standard curve of MP00280-3, Human SPTA1 Recombinant Matched Antibody Pair - PBS only. 83133-4-PBS was coated to a plate as the capture antibody and incubated with serial dilutions of standard SY01287. 83133-6-PBS was HRP conjugated as the detection antibody. Range: 78.1-2500 pg/mL



The mean SPTA1 concentration was determined to be 5,150.0 pg/mL in K-562 cell extract based on a 2.1 mg/mL extract load.



Cytometric bead array standard curve of MP00280-1, SPTA1 Recombinant Matched Antibody Pair, PBS Only. Capture antibody: 83133-6-PBS. Detection antibody: 83133-4-PBS. Standard: SY01287. Range: 78-2500 pg/mL