

For Research Use Only

# JUND Recombinant antibody

Catalog Number: 83134-6-RR



## Basic Information

**Catalog Number:**

83134-6-RR

**GenBank Accession Number:**

NM\_005354

**Purification Method:**

Protein A purification

**Size:**

100ul, Concentration: 1000 ug/ml by 3727

**GeneID (NCBI):**

3727

**CloneNo.:**

230457A4

Nanodrop;

**UNIPROT ID:**

P17535

**Recommended Dilutions:**

WB 1:1000-1:6000

**Source:**

Rabbit

**Full Name:**

jun D proto-oncogene

IF/ICC 1:125-1:500

**Isotype:**

IgG

**Calculated MW:**

35 kDa

**Observed MW:**

35-45 kDa

## Applications

**Tested Applications:**

WB, IF/ICC, FC (Intra), ELISA

**Positive Controls:**

WB : HeLa cells, HEK-293 cells, HepG2 cells, Jurkat cells

**Species Specificity:**

Human

IF/ICC : HeLa cells,

## Storage

**Storage:**

Store at -20°C. Stable for one year after shipment.

**Storage Buffer:**

PBS with 0.02% sodium azide and 50% glycerol pH 7.3.

Aliquoting is unnecessary for -20°C storage

\*\*\* 20ul sizes contain 0.1% BSA

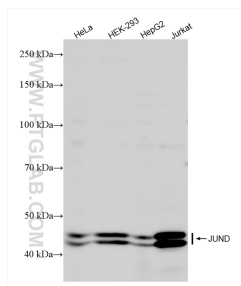
For technical support and original validation data for this product please contact:

T: 1 (888) 4PTGLAB (1-888-478-4522) (toll free in USA), or 1(312) 455-8498 (outside USA)

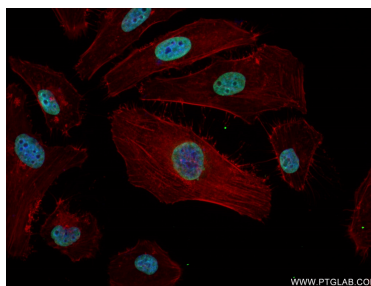
E: [proteintech@ptglab.com](mailto:proteintech@ptglab.com)  
W: [ptglab.com](http://ptglab.com)

This product is exclusively available under Proteintech Group brand and is not available to purchase from any other manufacturer.

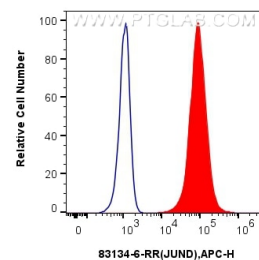
## Selected Validation Data



HeLa cells were subjected to SDS PAGE followed by western blot with 83134-6-RR (JUND antibody) at dilution of 1:3000 incubated at room temperature for 1.5 hours.



Immunofluorescent analysis of (4% PFA) fixed HeLa cells using JUND antibody (83134-6-RR, Clone: 230457A4 ) at dilution of 1:250 and CoraLite®488-Conjugated Goat Anti-Mouse IgG(H+L) (SA00013-1), CL594-Phalloidin (red).



$1 \times 10^6$  A431 cells were intracellularly stained with 0.25  $\mu$ g JUND Recombinant antibody (83134-6-RR, Clone:230457A4) and APC-Conjugated Goat Anti-Rabbit IgG(H+L)(red), or 0.25  $\mu$ g Rabbit IgG control Rabbit PolyAb (30000-0-AP) (blue). Cells were fixed and permeabilized with True-Nuclear Transcription Factor Buffer Set.