

RNF31 Recombinant antibody, PBS Only (Capture)

Catalog Number: **83137-3-PBS**

Basic Information

Catalog Number: 83137-3-PBS	GenBank Accession Number: BC017376	Purification Method: Protein A purification
Size: 100ug , Concentration: 1mg/ml by Nanodrop;	GeneID (NCBI): 55072	CloneNo.: 230446H1
Source: Rabbit	UNIPROT ID: Q96EPO	Affinity: $K_D = 5.82 \times 10^{-10}M$
Isotype: IgG	Full Name: ring finger protein 31	$K_{off} = 5.93 \times 10^{-5}M$
Immunogen Catalog Number: AG34505	Calculated MW: 1072 aa, 120 kDa	$K_{on} = 1.02 \times 10^5M$

Applications

Tested Applications:
IF/ICC, Indirect ELISA, Cytometric bead array

Species Specificity:
Human

Product Information

83137-3-PBS targets RNF31 as part of a matched antibody pair.

MP00285-1: 83137-3-PBS capture and 83137-1-PBS detection (validated in Cytometric bead array)

MP00285-2: 83137-3-PBS capture and 83137-2-PBS detection (validated in Cytometric bead array)

Unconjugated rabbit recombinant monoclonal antibody in PBS only (BSA and azide free) storage buffer at a concentration of 1 mg/mL, ready for conjugation. Created using Proteintech's proprietary in-house recombinant technology. Recombinant production enables unrivalled batch-to-batch consistency, easy scale-up, and future security of supply.

This conjugation ready format makes antibodies ideal for use in many applications including: ELISAs, multiplex assays requiring matched pairs, mass cytometry, and multiplex imaging applications. Antibody use should be optimized by the end user for each application and assay.

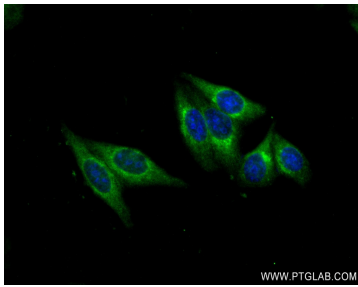
Storage

Storage:
Store at -80°C.
Storage Buffer:
PBS Only

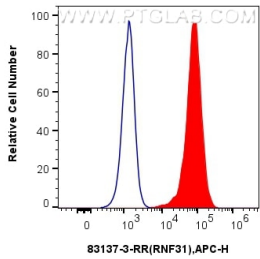
For technical support and original validation data for this product please contact:
T: 1 (888) 4PTGLAB (1-888-478-4522) (toll free in USA), or 1(312) 455-8498 (outside USA)
E: proteintech@ptglab.com
W: ptglab.com

This product is exclusively available under Proteintech Group brand and is not available to purchase from any other manufacturer.

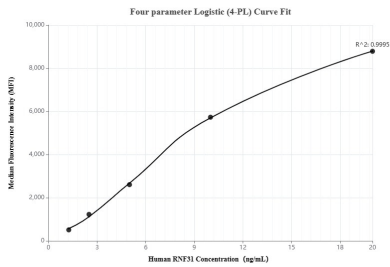
Selected Validation Data



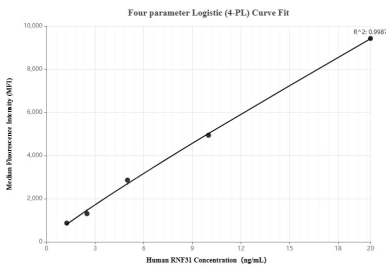
Immunofluorescent analysis of (-20°C Ethanol) fixed HepG2 cells using RNF31 antibody (83137-3-RR, Clone: 230446H1) at dilution of 1:250 and CoraLite®488-Conjugated AffiniPure Goat Anti-Rabbit IgG(H+L) (SA00013-2). This data was developed using the same antibody clone with 83137-3-PBS in a different storage buffer formulation.



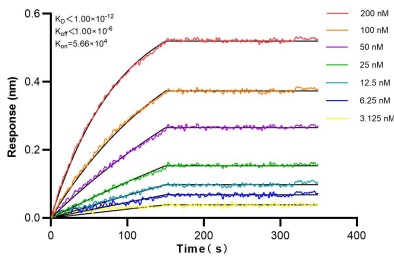
1x10⁶ PC-3 cells were intracellularly stained with 0.2 ug Rnf31 Recombinant Antibody (83137-3-RR, Clone:230446H1) and APC-Conjugated AffiniPure Goat Anti-Rabbit IgG(H+L)(red), or 0.2 ug Rabbit IgG control Rabbit PolyAb (30000-0-AP) (blue). Cells were fixed with 4% PFA and permeabilized with Flow Cytometry Perm Buffer (PF00011-C). This data was developed using the same antibody clone with 83137-3-PBS in a different storage buffer formulation.



Cytometric bead array standard curve of MP00285-1, RNF31 Recombinant Matched Antibody Pair - PBS only. Capture antibody: 83137-3-PBS. Detection antibody: 83137-1-PBS. Standard: Ag34505. Range: 1.25-20 ng/mL.



Cytometric bead array standard curve of MP00285-2, RNF31 Recombinant Matched Antibody Pair - PBS only. Capture antibody: 83137-3-PBS. Detection antibody: 83137-2-PBS. Standard: Ag34505. Range: 1.25-20 ng/mL.



Biolayer interferometry (BLI) kinetic assays of 83137-3-RR against Human RNF31 / HOIP were performed. The affinity constant is below 1 pM.