

For Research Use Only

NPT2C Recombinant monoclonal antibody, PBS Only (Capture)

Catalog Number: 83139-5-PBS



Basic Information

Catalog Number: 83139-5-PBS	GenBank Accession Number: NM_001177316.2	Purification Method: Protein A purification
Size: 100ug , Concentration: 1 mg/ml by Nanodrop;	GeneID (NCBI): 142680	CloneNo.: 252167D8
Source: Rabbit	UNIPROT ID: Q8N130	
Isotype: IgG	Full Name: solute carrier family 34 (sodium phosphate), member 3	
Immunogen Catalog Number: EG5835	Calculated MW: 63 kDa	

Applications

Tested Applications:
Sandwich ELISA, Indirect ELISA

Species Specificity:
human

Product Information

83139-5-PBS targets NPT2C as part of a matched antibody pair:

MP02935-1: 83139-5-PBS capture and 83139-4-PBS detection (validated in Sandwich ELISA)

Unconjugated rabbit recombinant monoclonal antibody in PBS only (BSA and azide free) storage buffer at a concentration of 1 mg/mL, ready for conjugation. Created using Proteintech's proprietary in-house recombinant technology. Recombinant production enables unrivalled batch-to-batch consistency, easy scale-up, and future security of supply.

This conjugation ready format makes antibodies ideal for use in many applications including: ELISAs, multiplex assays requiring matched pairs, mass cytometry, and multiplex imaging applications. Antibody use should be optimized by the end user for each application and assay.

Storage

Storage:
Store at -80°C.

Storage Buffer:
PBS only, pH7.3

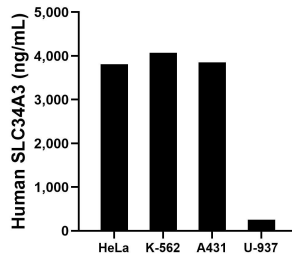
For technical support and original validation data for this product please contact:

T: 1 (888) 4PTGLAB (1-888-478-4522) (toll free in USA), or 1(312) 455-8498 (outside USA)

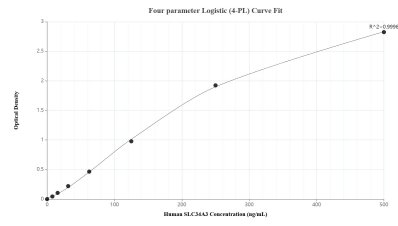
E: proteintech@ptglab.com
W: ptglab.com

This product is exclusively available under Proteintech Group brand and is not available to purchase from any other manufacturer.

Selected Validation Data



The mean SLC34A3 concentration was determined to be 3,807.34 ng/mL in HeLa cell extract based on a 1.20 mg/mL extract load, 4,074.78 ng/mL in K-562 cell extract based on a 1.20 mg/mL extract load, 3,855.17 ng/mL in A431 cell extract based on a 1.20 mg/mL extract load and 250.95 ng/mL in U-937 cell extract based on a 2.60 mg/mL extract load.



Sandwich ELISA standard curve of MP02935-1, Human SLC34A3 Recombinant Matched Antibody Pair - PBS only. 83139-5-PBS was coated to a plate as the capture antibody and incubated with serial dilutions of standard Eg5835. 83139-4-PBS was HRP conjugated as the detection antibody. Range: 7.81-500 ng/mL