

For Research Use Only

TMEM165 Recombinant antibody, PBS Only (Detector)

Catalog Number: 83146-1-PBS



Basic Information

Catalog Number: 83146-1-PBS	GenBank Accession Number: BC003545	Purification Method: Protein A purification
Size: 100ug , Concentration: 1mg/ml by Nanodrop;	GeneID (NCBI): 55858	CloneNo.: 230517B1
Source: Rabbit	UNIPROT ID: Q9HC07	
Isotype: IgG	Full Name: transmembrane protein 165	
Immunogen Catalog Number: AG14362	Calculated MW: 324 aa, 35 kDa	

Applications

Tested Applications:
IF/ICC, FC (Intra), Cytometric bead array, Indirect ELISA

Species Specificity:
human

Product Information

83146-1-PBS targets TMEM165 as part of a matched antibody pair:

MP00217-2: 83146-2-PBS capture and 83146-1-PBS detection (validated in Cytometric bead array)

Unconjugated rabbit recombinant monoclonal antibody in PBS only (BSA and azide free) storage buffer at a concentration of 1 mg/mL, ready for conjugation. Created using Proteintech's proprietary in-house recombinant technology. Recombinant production enables unrivalled batch-to-batch consistency, easy scale-up, and future security of supply.

This conjugation ready format makes antibodies ideal for use in many applications including: ELISAs, multiplex assays requiring matched pairs, mass cytometry, and multiplex imaging applications. Antibody use should be optimized by the end user for each application and assay.

Storage

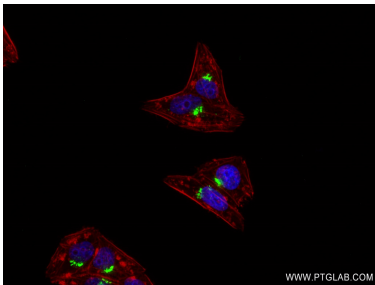
Storage:
Store at -80°C.

Storage Buffer:
PBS Only

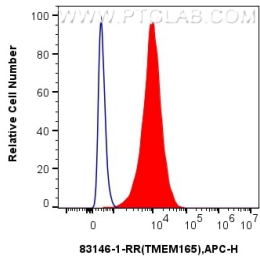
For technical support and original validation data for this product please contact:
T: 1 (888) 4PTGLAB (1-888-478-4522) (toll free in USA), or 1(312) 455-8498 (outside USA)
E: proteintech@ptglab.com
W: ptglab.com

This product is exclusively available under Proteintech Group brand and is not available to purchase from any other manufacturer.

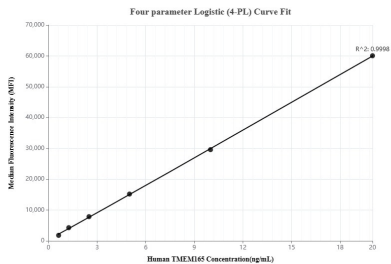
Selected Validation Data



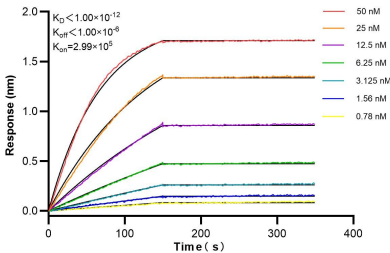
Immunofluorescent analysis of (4% PFA) fixed HepG2 cells using TMEM165 antibody (83146-1-RR, Clone: 230517B1) at dilution of 1:400 and CoraLite®488-Conjugated AffiniPure Goat Anti-Mouse IgG(H+L) (SA00013-1), CL594-Phalloidin (red). This data was developed using the same antibody clone with 83146-1-PBS in a different storage buffer formulation.



1x10⁶ HepG2 cells were intracellularly stained with 0.25 ug TMEM165 Recombinant antibody (83146-1-RR, Clone:230517B1) and APC-Conjugated AffiniPure Goat Anti-Rabbit IgG(H+L)(red), or 0.25 ug Rabbit IgG control Rabbit PolyAb (30000-O-AP) (blue). Cells were fixed with 4% PFA and permeabilized with Flow Cytometry Perm Buffer (PF00011-C). This data was developed using the same antibody clone with 83146-1-PBS in a different storage buffer formulation.



Cytometric bead array standard curve of MP00217-2, TMEM165 Recombinant Matched Antibody Pair, PBS Only. Capture antibody: 83146-2-PBS. Detection antibody: 83146-1-PBS. Standard: Ag14362. Range: 0.625-20 ng/mL



Biolayer interferometry (BLI) kinetic assays of 83146-1-RR against Human TMEM165 were performed. The affinity constant is below 1 pM.