

For Research Use Only

STX1A Recombinant antibody, PBS Only (Capture/Detector)

Catalog Number: 83159-3-PBS



Basic Information

Catalog Number: 83159-3-PBS	GenBank Accession Number: NM_004603	Purification Method: Protein A purification
Size: 100ug , Concentration: 1mg/ml by Nanodrop;	GeneID (NCBI): 6804	CloneNo.: 240018D9
Source: Rabbit	UNIPROT ID: Q16623	
Isotype: IgG	Full Name: syntaxin 1A (brain)	
	Calculated MW: 33 kDa	

Applications

Tested Applications:
Cytometric bead array, Sandwich ELISA, Indirect ELISA, Sample test

Species Specificity:
human

Product Information

83159-3-PBS targets STX1A as part of a matched antibody pair:

MP00172-1: 83159-3-PBS capture and 83159-4-PBS detection (validated in Cytometric bead array)

MP00172-3: 83159-3-PBS capture and 83159-1-PBS detection (validated in Cytometric bead array)

MP00172-4: 83159-1-PBS capture and 83159-3-PBS detection (validated in Sandwich ELISA)

Unconjugated rabbit recombinant monoclonal antibody in PBS only (BSA and azide free) storage buffer at a concentration of 1 mg/mL, ready for conjugation. Created using Proteintech's proprietary in-house recombinant technology. Recombinant production enables unrivalled batch-to-batch consistency, easy scale-up, and future security of supply.

This conjugation ready format makes antibodies ideal for use in many applications including: ELISAs, multiplex assays requiring matched pairs, mass cytometry, and multiplex imaging applications. Antibody use should be optimized by the end user for each application and assay.

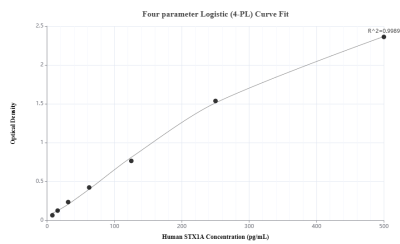
Storage

Storage:
Store at -80°C.
Storage Buffer:
PBS Only

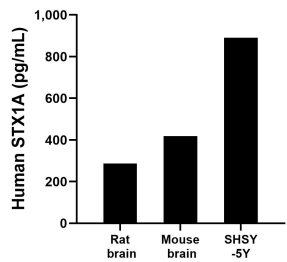
For technical support and original validation data for this product please contact:
T: 1 (888) 4PTGLAB (1-888-478-4522) (toll free in USA), or 1(312) 455-8498 (outside USA)
E: proteintech@ptglab.com
W: ptglab.com

This product is exclusively available under Proteintech Group brand and is not available to purchase from any other manufacturer.

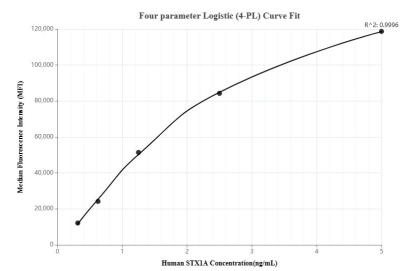
Selected Validation Data



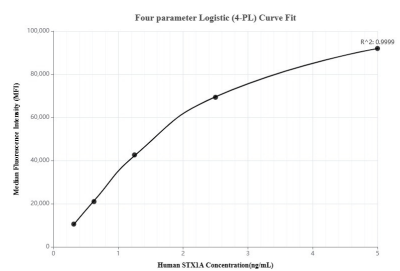
Sandwich ELISA standard curve of MP00172-4, Human STX1A Monoclonal Matched Antibody Pair - PBS only. 83159-1-PBS was coated to a plate as the capture antibody and incubated with serial dilutions of standard SY01214. 83159-3-PBS was HRP conjugated as the detection antibody. Range: 7.8-500 pg/mL.



The mean human STX1A concentration was determined to be 287.3 pg/mL in rat brain extract based on a 3 mg/mL extract load, 418.7 pg/mL in mouse brain extract based on a 2 mg/mL extract load and 890.3 pg/mL in SHSY-5Y cell extract based on a 3 mg/mL extract load.



Cytometric bead array standard curve of MP00172-1, STX1A Recombinant Matched Antibody Pair, PBS Only. Capture antibody: 83159-3-PBS. Detection antibody: 83159-4-PBS. Standard: SY01214. Range: 0.313-5 ng/mL.



Cytometric bead array standard curve of MP00172-3, STX1A Recombinant Matched Antibody Pair, PBS Only. Capture antibody: 83159-3-PBS. Detection antibody: 83159-1-PBS. Standard: SY01214. Range: 0.313-5 ng/mL.