

For Research Use Only

IFI35 Recombinant antibody, PBS Only (Capture)

Catalog Number: 83160-2-PBS



Basic Information

| | | |
|--|--|---|
| Catalog Number: 83160-2-PBS | GenBank Accession Number: BC001356 | Purification Method: Protein A purification |
| Size: 100ug , Concentration: 1mg/ml by Nanodrop; | GeneID (NCBI): 3430 | CloneNo.: 240063C6 |
| Source: Rabbit | UNIPROT ID: P80217 | |
| Isotype: IgG | Full Name: interferon-induced protein 35 | |
| Immunogen Catalog Number: AG34653 | Calculated MW: 31 kDa | |

Applications

Tested Applications:
IF/ICC, FC (Intra), Cytometric bead array, Indirect ELISA

Species Specificity:
human

Product Information

83160-2-PBS targets IFI35 as part of a matched antibody pair:

MP00191-2: 83160-2-PBS capture and 83160-1-PBS detection (validated in Cytometric bead array)

Unconjugated rabbit recombinant monoclonal antibody in PBS only (BSA and azide free) storage buffer at a concentration of 1 mg/mL, ready for conjugation. Created using Proteintech's proprietary in-house recombinant technology. Recombinant production enables unrivalled batch-to-batch consistency, easy scale-up, and future security of supply.

This conjugation ready format makes antibodies ideal for use in many applications including: ELISAs, multiplex assays requiring matched pairs, mass cytometry, and multiplex imaging applications. Antibody use should be optimized by the end user for each application and assay.

Background Information

IFI35 (interferon induced protein 35), also known as IFP35. It is expected to be located in cytoplasm, nucleus and extracellular space. The protein is expressed in a wide range of cell types, including fibroblasts, macrophages, and epithelial cells. Involved in several processes, including macrophage activation involved in immune response; positive regulation of defense response; and regulation of signal transduction. And the calculated molecular weight of IFI35 is 31 kDa.

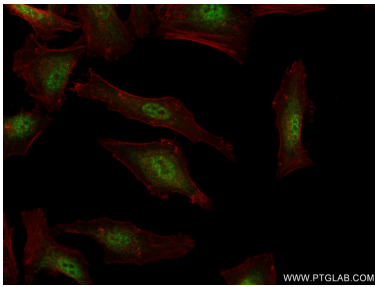
Storage

Storage:
Store at -80°C.
Storage Buffer:
PBS Only

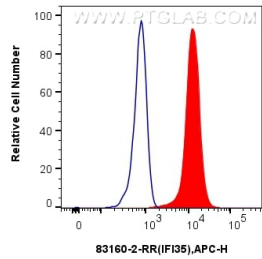
For technical support and original validation data for this product please contact:
T: 1 (888) 4PTGLAB (1-888-478-4522) (toll free in USA), or 1(312) 455-8498 (outside USA)
E: proteintech@ptglab.com
W: ptglab.com

This product is exclusively available under Proteintech Group brand and is not available to purchase from any other manufacturer.

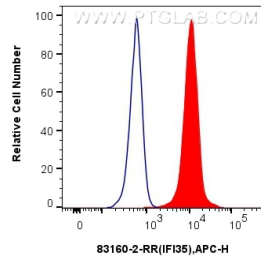
Selected Validation Data



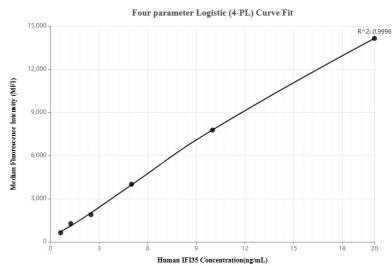
Immunofluorescent analysis of (4% PFA) fixed HeLa cells using IFI35 antibody (83160-2-RR, Clone: 240063C6) at dilution of 1:250 and CoraLite®488-Conjugated AffiniPure Goat Anti-Rabbit IgG(H+L) (SA00013-2), CL594-Phalloidin (red). This data was developed using the same antibody clone with 83160-2-PBS in a different storage buffer formulation.



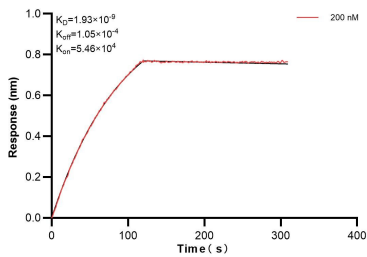
1x10⁶ A549 cells were intracellularly stained with 0.25 ug Ifi35 Recombinant Antibody (83160-2-RR, Clone:240063C6) and APC-Conjugated AffiniPure Goat Anti-Rabbit IgG(H+L)(red), or 0.25 ug Rabbit IgG control Rabbit PolyAb (30000-0-AP) (blue). Cells were fixed and permeabilized with True-Nuclear Transcription Factor Buffer Set. This data was developed using the same antibody clone with 83160-2-PBS in a different storage buffer formulation.



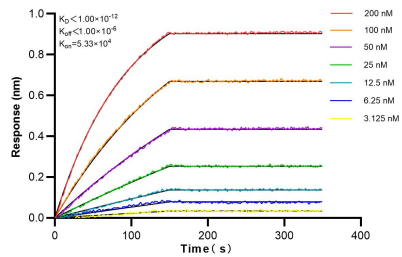
1x10⁶ HeLa cells were intracellularly stained with 0.25 ug Ifi35 Recombinant Antibody (83160-2-RR, Clone:240063C6) and APC-Conjugated AffiniPure Goat Anti-Rabbit IgG(H+L)(red), or 0.25 ug Rabbit IgG control Rabbit PolyAb (30000-0-AP) (blue). Cells were fixed and permeabilized with True-Nuclear Transcription Factor Buffer Set. This data was developed using the same antibody clone with 83160-2-PBS in a different storage buffer formulation.



Cytometric bead array standard curve of MP00191-2, IFI35 Recombinant Matched Antibody Pair, PBS Only. Capture antibody: 83160-2-PBS. Detection antibody: 83160-1-PBS. Standard: Ag34653. Range: 0.625-20 ng/mL



Biolayer interferometry (BLI) kinetic assay of 83160-2-PBS against Human IFI35 was performed. The affinity constant is 1.93 nM.



Biolayer interferometry (BLI) kinetic assays of 83160-2-RR against Human IFI35 were performed. The affinity constant is below 1 pM.