

For Research Use Only

# IFI35 Recombinant antibody

Catalog Number: 83160-4-RR



## Basic Information

<b>Catalog Number:</b> 83160-4-RR	<b>GenBank Accession Number:</b> BC001356	<b>Purification Method:</b> Protein A purification
<b>Size:</b> 100ul , Concentration: 1000 ug/ml by Nanodrop;	<b>GeneID (NCBI):</b> 3430	<b>CloneNo.:</b> 240063E1
<b>Source:</b> Rabbit	<b>UNIPROT ID:</b> P80217	<b>Recommended Dilutions:</b> WB 1:5000-1:50000 IHC 1:200-1:800
<b>Isotype:</b> IgG	<b>Full Name:</b> interferon-induced protein 35	
<b>Immunogen Catalog Number:</b> AG34653	<b>Calculated MW:</b> 31 kDa	
	<b>Observed MW:</b> 31-35 kDa	

## Applications

**Tested Applications:**  
WB, IHC, ELISA

**Species Specificity:**  
human

**Note-IHC:** suggested antigen retrieval with **TE buffer pH 9.0; (\*) Alternatively, antigen retrieval may be performed with citrate buffer pH 6.0**

**Positive Controls:**

**WB :** A549 cells, HeLa cells, MCF-7 cells, HepG2 cells, SW480 cells, Jurkat cells

**IHC :** human ovary cancer tissue,

## Background Information

IFI35 (interferon induced protein 35), also known as IFP35. It is expected to be located in cytoplasm, nucleus and extracellular space. The protein is expressed in a wide range of cell types, including fibroblasts, macrophages, and epithelial cells. Involved in several processes, including macrophage activation involved in immune response; positive regulation of defense response; and regulation of signal transduction. And the calculated molecular weight of IFI35 is 31 kDa.

## Storage

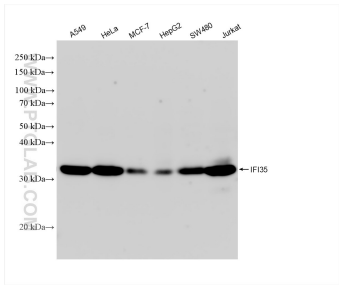
**Storage:**  
Store at -20°C. Stable for one year after shipment.  
**Storage Buffer:**  
PBS with 0.02% sodium azide and 50% glycerol pH 7.3.  
**Aliquoting is unnecessary for -20°C storage**

**\*\*\* 20ul sizes contain 0.1% BSA**

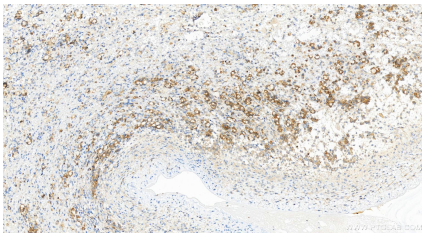
For technical support and original validation data for this product please contact:  
T: 1 (888) 4PTGLAB (1-888-478-4522) (toll free in USA), or 1(312) 455-8498 (outside USA)  
E: [proteintech@ptglab.com](mailto:proteintech@ptglab.com)  
W: [ptglab.com](http://ptglab.com)

This product is exclusively available under Proteintech Group brand and is not available to purchase from any other manufacturer.

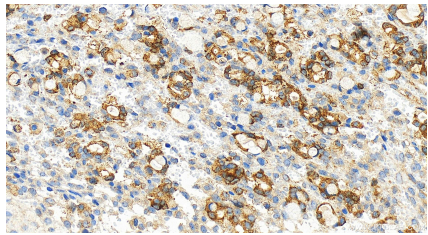
Selected Validation Data



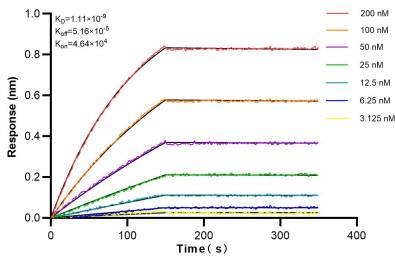
Various lysates were subjected to SDS PAGE followed by western blot with 83160-4-RR (IFI35 antibody) at dilution of 1:10000 incubated at room temperature for 1.5 hours.



Immunohistochemical analysis of paraffin-embedded human ovary cancer tissue slide using 83160-4-RR (IFI35 antibody) at dilution of 1:400 (under 20x lens). Heat mediated antigen retrieval with Tris-EDTA buffer (pH 9.0).



Immunohistochemical analysis of paraffin-embedded human ovary cancer tissue slide using 83160-4-RR (IFI35 antibody) at dilution of 1:400 (under 20x lens). Heat mediated antigen retrieval with Tris-EDTA buffer (pH 9.0).



Biolayer interferometry (BLI) kinetic assays of 83160-4-RR against Human IFI35 were performed. The affinity constant is 1.11 nM.