

For Research Use Only

# TSG-6 Recombinant antibody, PBS Only (Detector)

Catalog Number: 83163-3-PBS



## Basic Information

<b>Catalog Number:</b> 83163-3-PBS	<b>GenBank Accession Number:</b> BC030205	<b>Purification Method:</b> Protein A purification
<b>Size:</b> 100ug , Concentration: 1 mg/ml by Nanodrop;	<b>GeneID (NCBI):</b> 7130	<b>CloneNo.:</b> 230438H4
<b>Source:</b> Rabbit	<b>UNIPROT ID:</b> P98066	
<b>Isotype:</b> IgG	<b>Full Name:</b> tumor necrosis factor, alpha-induced protein 6	
<b>Immunogen Catalog Number:</b> AG3885	<b>Calculated MW:</b> 277 aa, 31 kDa	

## Applications

**Tested Applications:**  
Cytometric bead array, Sandwich ELISA, Indirect ELISA, Sample test

**Species Specificity:**  
human

## Product Information

83163-3-PBS targets TSG-6 as part of a matched antibody pair:

MP00218-1: 83163-2-PBS capture and 83163-3-PBS detection (validated in Cytometric bead array)

MP00218-2: 83163-1-PBS capture and 83163-3-PBS detection (validated in Cytometric bead array)

MP00218-3: 83163-4-PBS capture and 83163-3-PBS detection (validated in Sandwich ELISA)

Unconjugated rabbit recombinant monoclonal antibody in PBS only (BSA and azide free) storage buffer at a concentration of 1 mg/mL, ready for conjugation. Created using Proteintech's proprietary in-house recombinant technology. Recombinant production enables unrivalled batch-to-batch consistency, easy scale-up, and future security of supply.

This conjugation ready format makes antibodies ideal for use in many applications including: ELISAs, multiplex assays requiring matched pairs, mass cytometry, and multiplex imaging applications. Antibody use should be optimized by the end user for each application and assay.

## Storage

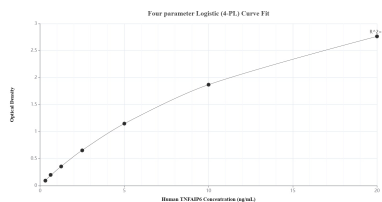
**Storage:**  
Store at -80°C.

**Storage Buffer:**  
PBS Only

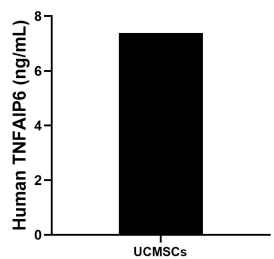
For technical support and original validation data for this product please contact:  
T: 1 (888) 4PTGLAB (1-888-478-4522) (toll free in USA), or 1(312) 455-8498 (outside USA)  
E: [proteintech@ptglab.com](mailto:proteintech@ptglab.com)  
W: [ptglab.com](http://ptglab.com)

This product is exclusively available under Proteintech Group brand and is not available to purchase from any other manufacturer.

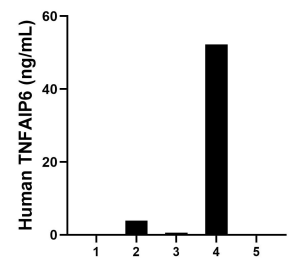
## Selected Validation Data



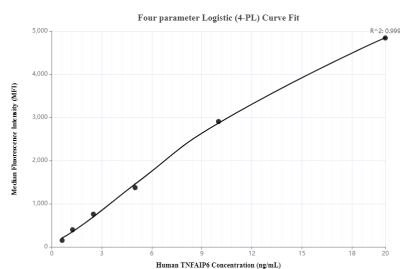
Sandwich ELISA standard curve of MP00218-3, Human TSG-6 Recombinant Matched Antibody Pair - PBS only. 83163-4-PBS was coated to a plate as the capture antibody and incubated with serial dilutions of standard Ag3885. 83163-3-PBS was HRP conjugated as the detection antibody. Range: 0.313-20 ng/mL



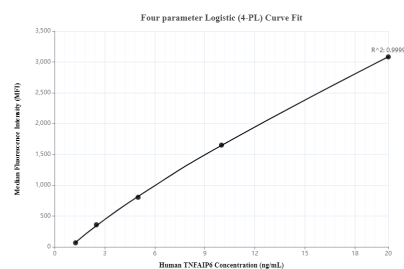
The mean TSG-6 concentration was determined to be 7.39 ng/mL in UCMSCs cell extract based on a 3.0 mg/mL extract load.



Serum of five individual healthy human donors was measured. The TSG-6 concentration of detected samples was determined to be 11.38 ng/mL with a range of 0.03-52.26 ng/mL.



Cytometric bead array standard curve of MP00218-1, TSG-6 Recombinant Matched Antibody Pair, PBS Only. Capture antibody: 83163-2-PBS. Detection antibody: 83163-3-PBS. Standard: Ag3885. Range: 0.625-20 ng/mL



Cytometric bead array standard curve of MP00218-2, TSG-6 Recombinant Matched Antibody Pair, PBS Only. Capture antibody: 83163-1-PBS. Detection antibody: 83163-3-PBS. Standard: Ag3885. Range: 1.25-20 ng/mL