

For Research Use Only

# Mouse Angiopoietin-like 3/ANGPTL3 Recombinant antibody, PBS Only (Capture/Detector)

Catalog Number: 83165-2-PBS



## Basic Information

### Catalog Number:

83165-2-PBS

### Size:

100ug, Concentration: 1mg/ml by  
Nanodrop;

### Source:

Rabbit

### Isotype:

IgG

### GenBank Accession Number:

NM\_013913.4

### GeneID (NCBI):

30924

### UNIPROT ID:

Q9R182

### Full Name:

angiopoietin-like 3

### Calculated MW:

53KD

### Purification Method:

Protein A purification

### CloneNo.:

230498C11

## Applications

### Tested Applications:

Cytometric bead array, Sandwich ELISA, Indirect ELISA,  
Sample test

### Species Specificity:

mouse

## Product Information

83165-2-PBS targets Angiopoietin-like 3/ANGPTL3 as part of a matched antibody pair:

MP00227-1: 83165-1-PBS capture and 83165-2-PBS detection (validated in Cytometric bead array)

MP00227-2: 83165-2-PBS capture and 83165-1-PBS detection (validated in Sandwich ELISA)

Unconjugated rabbit recombinant monoclonal antibody in PBS only (BSA and azide free) storage buffer at a concentration of 1 mg/mL, ready for conjugation. Created using Proteintech's proprietary in-house recombinant technology. Recombinant production enables unrivalled batch-to-batch consistency, easy scale-up, and future security of supply.

This conjugation ready format makes antibodies ideal for use in many applications including: ELISAs, multiplex assays requiring matched pairs, mass cytometry, and multiplex imaging applications. Antibody use should be optimized by the end user for each application and assay.

## Storage

### Storage:

Store at -80°C.

### Storage Buffer:

PBS Only

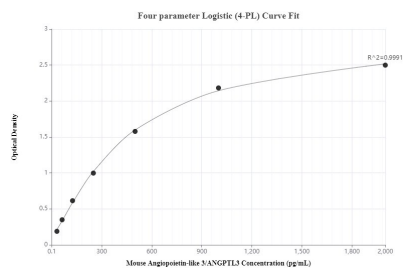
For technical support and original validation data for this product please contact:

T: 1 (888) 4PTGLAB (1-888-478-4522) (toll free  
in USA), or 1(312) 455-8498 (outside USA)

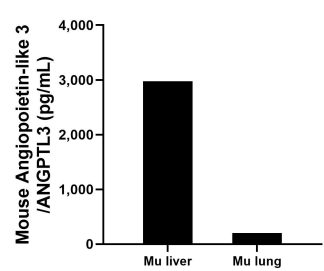
E: [proteintech@ptglab.com](mailto:proteintech@ptglab.com)  
W: [ptglab.com](http://ptglab.com)

This product is exclusively available under Proteintech Group brand and is not available to purchase from any other manufacturer.

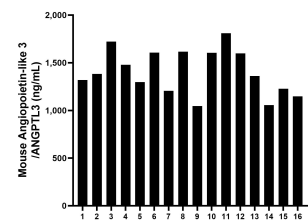
## Selected Validation Data



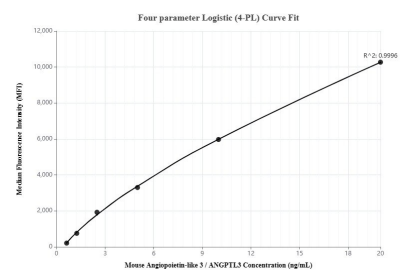
Sandwich ELISA standard curve of MP00227-2, Mouse Angiopoietin-like 3/ANGPTL3 Monoclonal Matched Antibody Pair - PBS only. 83165-2-PBS was coated to a plate as the capture antibody and incubated with serial dilutions of standard Eg0662. 83165-1-PBS was HRP conjugated as the detection antibody. Range: 31.25-2000 pg/mL



Organs from 2-3 mice were removed, rinsed in PBS, and kept on ice. The organs were then homogenized using a tissue homogenizer and cultured in RPMI supplemented with 10% fetal bovine serum, 2 mM L-glutamine, 100 U/mL penicillin, and 100 mg/mL streptomycin sulfate. Cell culture supernatants from liver tissue measured 2,972.7 pg/mL and lung tissue measured 205.3 pg/mL



Serum of sixteen individual healthy mice were measured. The Mouse Angiopoietin-like 3/ANGPTL3 concentration of detected samples was determined to be 1,404.9 ng/mL with a range of 1,046.2-1,810.6 ng/mL



Cytometric bead array standard curve of MP00227-1, Mouse Angiopoietin-like 3/ANGPTL3 Recombinant Matched Antibody Pair, PBS Only. Capture antibody: 83165-1-PBS. Detection antibody: 83165-2-PBS. Standard: Eg0662. Range: 0.625-20 ng/mL