

For Research Use Only

SMAD4 Recombinant antibody

Catalog Number: 83169-5-RR

Featured Product



Basic Information

Catalog Number:

83169-5-RR

Size:

100ul , Concentration: 1000 ug/ml by Nanodrop;

Source:

Rabbit

Isotype:

IgG

Immunogen Catalog Number:

AG0299

GenBank Accession Number:

BC002379

GeneID (NCBI):

4089

UNIPROT ID:

Q13485

Full Name:

SMAD family member 4

Calculated MW:

60 kDa

Observed MW:

63-70 kDa

Purification Method:

Protein A purification

CloneNo.:

240026G9

Recommended Dilutions:

WB 1:5000-1:50000

IF/ICC 1:125-1:500

Applications

Tested Applications:

WB, IF/ICC, FC (Intra), ELISA

Species Specificity:

human, mouse

Positive Controls:

WB : BxPC-3 cells, HEK-293 cells, NIH/3T3 cells, MCF-7 cells

IF/ICC : HepG2 cells,

Background Information

Mammalian homologs of the Drosophila Mad gene include Smad1, Smad2, Smad3, Smad4 (DPC4), Smad5, Smad6, Smad7 and Smad8. Smad1 and Smad5 are effectors of BMP2 and BMP4 function while Smad2 and Smad3 are involved in TGF and activin-mediated growth modulation. Smad4 has been shown to mediate all of the above activities through interaction with various Smad family members. Smad6 and Smad7 regulate the response to activin/ TGF signaling by interfering with TGF-mediated phosphorylation of other Smad family members.

Storage

Storage:

Store at -20°C. Stable for one year after shipment.

Storage Buffer:

PBS with 0.02% sodium azide and 50% glycerol pH 7.3.

Aliquoting is unnecessary for -20°C storage

*** 20ul sizes contain 0.1% BSA

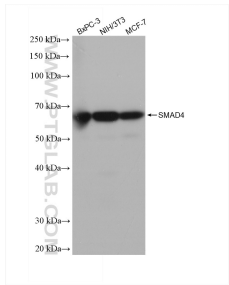
For technical support and original validation data for this product please contact:

T: 1 (888) 4PTGLAB (1-888-478-4522) (toll free in USA), or 1(312) 455-8498 (outside USA)

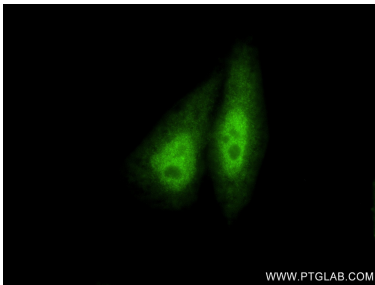
E: proteintech@ptglab.com
W: ptglab.com

This product is exclusively available under Proteintech Group brand and is not available to purchase from any other manufacturer.

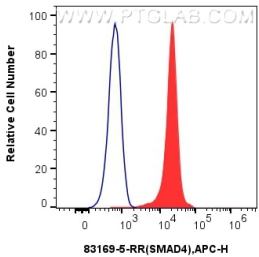
Selected Validation Data



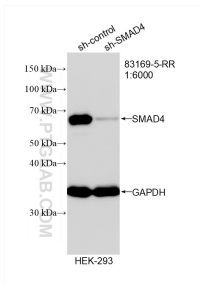
Various lysates were subjected to SDS PAGE followed by western blot with 83169-5-RR (SMAD4 antibody) at dilution of 1:20000 incubated at room temperature for 1.5 hours.



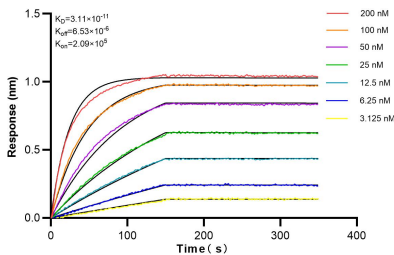
Immunofluorescent analysis of (4% PFA) fixed HepG2 cells using SMAD4 antibody (83169-5-RR, Clone: 240026G9) at dilution of 1:250 and CoraLite®488-Conjugated AffiniPure Goat Anti-Rabbit IgG(H+L) (SA00013-2).



1x10⁶ HepG2 cells were intracellularly stained with 0.25 ug SMAD4 Recombinant antibody (83169-5-RR, Clone:240026G9) and APC-Conjugated AffiniPure Goat Anti-Rabbit IgG(H+L)(red), or 0.25 ug Rabbit IgG control Rabbit PolyAb (30000-0-AP) (blue). Cells were fixed and permeabilized with True-Nuclear Transcription Factor Buffer Set.



WB result of SMAD4 antibody (83169-5-RR; 1:6000; incubated at room temperature for 1.5 hours) with sh-Control and sh-SMAD4 transfected HEK-293 cells.



Bioluminescence resonance energy transfer (BRET) kinetic assays of 83169-5-RR against Human SMAD4 were performed. The affinity constant is below 1 pM.