

For Research Use Only

MAP7D1 Recombinant antibody

Catalog Number: 83173-1-RR



Basic Information

Catalog Number: 83173-1-RR	GenBank Accession Number: BC003083	Purification Method: Protein A purification
Size: 100ul , Concentration: 1000 µg/ml by Nanodrop;	GeneID (NCBI): 55700	CloneNo.: 230424A6
Source: Rabbit	UNIPROT ID: Q3KQU3	Recommended Dilutions: WB 1:2000-1:10000 IF/ICC 1:200-1:800
Isotype: IgG	Full Name: MAP7 domain containing 1	
Immunogen Catalog Number: AG14385	Calculated MW: 841 aa, 93 kDa	
	Observed MW: 120-130 kDa	

Applications

Tested Applications: WB, IF/ICC, ELISA	Positive Controls:
Species Specificity: human	WB : HeLa cells, MDA-MB-231 cells IF/ICC : U-251 cells,

Background Information

MAP7D1 also known as RPRC1, PARCC1, belongs to the MAP7 family. The MAP7 (Microtubule Associated Protein 7) protein family, consisting of four members, MAP7, MAP7D1, and MAP7D2, MAP7D3, is the microtubule-associated protein involved in various cellular processes regulating microtubule dynamics, organization, and stability (PMID: 28980356). MAP7D1 exhibits the highest conservation with MAP7 and was recently identified as a phosphorylation substrate of DCLK1 in cortical neurons. MAP7D1 is required to maintain MT acetylation, which is enriched in stable MTs (PMID: 35470240). Consistent with the literature, the apparent molecular mass of MAP7D1 detected by Western blot was 120-130 kDa (PMID: 35470240, 37550720).

Storage

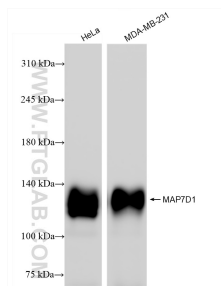
Storage:
Store at -20°C. Stable for one year after shipment.
Storage Buffer:
PBS with 0.02% sodium azide and 50% glycerol pH 7.3.
Aliquoting is unnecessary for -20°C storage

*** 20ul sizes contain 0.1% BSA

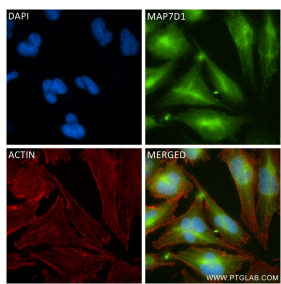
For technical support and original validation data for this product please contact:
T: 1 (888) 4PTGLAB (1-888-478-4522) (toll free in USA), or 1(312) 455-8498 (outside USA)
E: proteintech@ptglab.com
W: ptglab.com

This product is exclusively available under Proteintech Group brand and is not available to purchase from any other manufacturer.

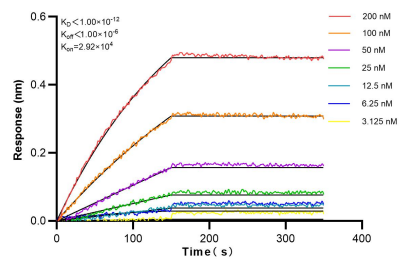
Selected Validation Data



Various lysates were subjected to SDS PAGE followed by western blot with 83173-1-RR (MAP7D1 antibody) at dilution of 1:5000 incubated at room temperature for 1.5 hours.



Immunofluorescent analysis of (4% PFA) fixed U-251 cells using MAP7D1 antibody (83173-1-RR, Clone: 230424A6) at dilution of 1:400 and CoraLite®488-Conjugated Goat Anti-Rabbit IgG(H+L) (SA00013-2), CL594-Phalloidin (red).



Biolayer interferometry (BLI) kinetic assays of 83173-1-RR against Human MAP7D1 were performed. The affinity constant is below 1 pM.