

For Research Use Only

KLF9 Recombinant antibody, PBS Only (Detector)



Catalog Number: 83183-4-PBS

Basic Information

Catalog Number: 83183-4-PBS	GenBank Accession Number: BC074880	Purification Method: Protein A purification
Size: 100ug , Concentration: 1mg/ml by Nanodrop;	GeneID (NCBI): 687	CloneNo.: 230436H2
Source: Rabbit	UNIPROT ID: Q13886	
Isotype: IgG	Full Name: Kruppel-like factor 9	
Immunogen Catalog Number: AG34411	Calculated MW: 27 kDa	

Applications

Tested Applications:
Cytometric bead array, Indirect ELISA, WB

Species Specificity:
human

Product Information

83183-4-PBS targets KLF9 as part of a matched antibody pair:

MP00148-1: 83183-3-PBS capture and 83183-4-PBS detection (validated in Cytometric bead array)

MP00148-2: 83183-2-PBS capture and 83183-4-PBS detection (validated in Cytometric bead array)

Unconjugated rabbit recombinant monoclonal antibody in PBS only (BSA and azide free) storage buffer at a concentration of 1 mg/mL, ready for conjugation. Created using Proteintech's proprietary in-house recombinant technology. Recombinant production enables unrivalled batch-to-batch consistency, easy scale-up, and future security of supply.

This conjugation ready format makes antibodies ideal for use in many applications including: ELISAs, multiplex assays requiring matched pairs, mass cytometry, and multiplex imaging applications. Antibody use should be optimized by the end user for each application and assay.

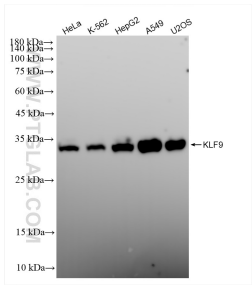
Storage

Storage:
Store at -80°C.
Storage Buffer:
PBS Only

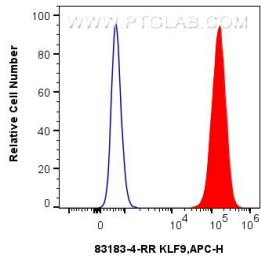
For technical support and original validation data for this product please contact:
T: 1 (888) 4PTGLAB (1-888-478-4522) (toll free in USA), or 1(312) 455-8498 (outside USA)
E: proteintech@ptglab.com
W: ptglab.com

This product is exclusively available under Proteintech Group brand and is not available to purchase from any other manufacturer.

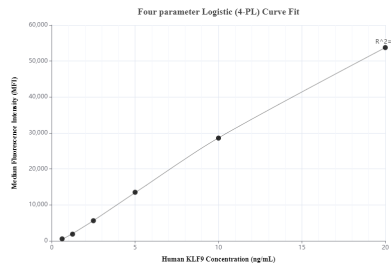
Selected Validation Data



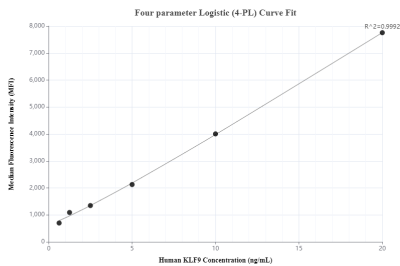
Various lysates were subjected to SDS PAGE followed by western blot with 83183-4-RR (KLF9 antibody) at dilution of 1:10000 incubated at room temperature for 1.5 hours. This data was developed using the same antibody clone with 83183-4-PBS in a different storage buffer formulation.



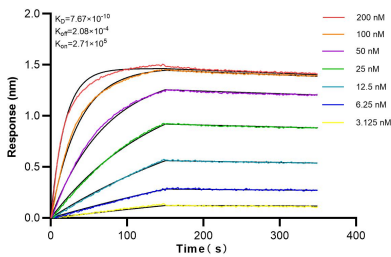
1x10⁶ A549 cells were intracellularly stained with 0.25 ug KLF9 Recombinant antibody (83183-4-RR, Clone:230436H2) and APC-Conjugated AffiniPure Goat Anti-Rabbit IgG(H+L)(red), or 0.25 ug Isotype Control (blue). Cells were fixed and permeabilized with True-Nuclear Transcription Factor Buffer Set. This data was developed using the same antibody clone with 83183-4-PBS in a different storage buffer formulation.



Cytometric bead array standard curve ofMP00148-1, KLF9 Recombinant Matched Antibody Pair, PBS Only. Capture antibody: 83183-3-PBS. Detection antibody: 83183-4-PBS. Standard: Ag34411. Range: 0.625-20 ng/mL.



Cytometric bead array standard curve ofMP00148-2, KLF9 Recombinant Matched Antibody Pair, PBS Only. Capture antibody: 83183-2-PBS. Detection antibody: 83183-4-PBS. Standard: Ag34411. Range: 0.625-20 ng/mL.



Biolayer interferometry (BLI) kinetic assays of 83183-4-RR against Human KLF9 were performed. The affinity constant is 0.767 nM.