

For Research Use Only

# SORBS2 Recombinant antibody, PBS Only



Catalog Number: 83189-3-PBS

## Basic Information

<b>Catalog Number:</b> 83189-3-PBS	<b>GenBank Accession Number:</b> BC011883	<b>Purification Method:</b> Protein A purification
<b>Size:</b> 100ug , Concentration: 1 mg/ml by Nanodrop;	<b>GeneID (NCBI):</b> 8470	<b>CloneNo.:</b> 240023A8
<b>Source:</b> Rabbit	<b>UNIPROT ID:</b> O94875	
<b>Isotype:</b> IgG	<b>Full Name:</b> sorbin and SH3 domain containing 2	
<b>Immunogen Catalog Number:</b> AG20041	<b>Calculated MW:</b> 1100 aa, 124 kDa	

## Applications

**Tested Applications:**  
WB, IF, ELISA

**Species Specificity:**  
Human

## Storage

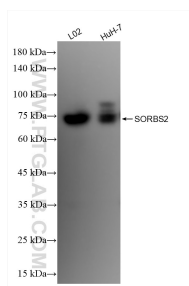
**Storage:**  
Store at -80°C.

**Storage Buffer:**  
PBS Only

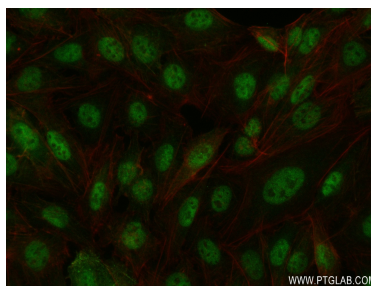
For technical support and original validation data for this product please contact:  
T: 1 (888) 4PTGLAB (1-888-478-4522) (toll free in USA), or 1(312) 455-8498 (outside USA)  
E: [proteintech@ptglab.com](mailto:proteintech@ptglab.com)  
W: [ptglab.com](http://ptglab.com)

This product is exclusively available under Proteintech Group brand and is not available to purchase from any other manufacturer.

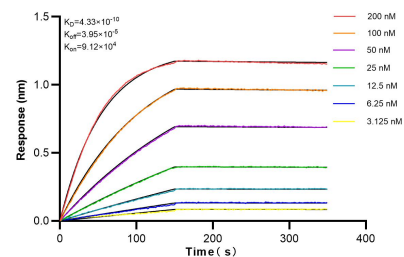
## Selected Validation Data



Various lysates were subjected to SDS PAGE followed by western blot with 83189-3-RR (SORBS2 antibody) at dilution of 1:10000 incubated at room temperature for 1.5 hours. This data was developed using the same antibody clone with 83189-3-PBS in a different storage buffer formulation.



Immunofluorescent analysis of (4% PFA) fixed U2OS cells using SORBS2 antibody (83189-3-RR, Clone: 240023A8) at dilution of 1:250 and CoraLite®488-Conjugated AffiniPure Goat Anti-Rabbit IgG(H+L) (SA00013-2), CL594-Phalloidin (red). This data was developed using the same antibody clone with 83189-3-PBS in a different storage buffer formulation.



Biolayer interferometry (BLI) kinetic assays of 83189-3-RR against Human SORBS2 were performed. The affinity constant is 0.433 nM.