

For Research Use Only

SLC22A4 Recombinant antibody, PBS Only (Detector)



Catalog Number: 83192-1-PBS

Basic Information

Catalog Number: 83192-1-PBS	GenBank Accession Number: BC028313	Purification Method: Protein A purification
Size: 100ug , Concentration: 1 mg/ml by Nanodrop;	GeneID (NCBI): 6583	CloneNo.: 240064D5
Source: Rabbit	UNIPROT ID: Q9H015	
Isotype: IgG	Full Name: solute carrier family 22 (organic cation/ergothioneine transporter), member 4	
Immunogen Catalog Number: AG3974	Calculated MW: 551 aa, 62 kDa	

Applications

Tested Applications:
Cytometric bead array, Indirect ELISA, WB

Species Specificity:
mouse, human

Product Information

83192-1-PBS targets SLC22A4 as part of a matched antibody pair:

MP00292-3: 83192-4-PBS capture and 83192-1-PBS detection (validated in Cytometric bead array)

Unconjugated rabbit recombinant monoclonal antibody in PBS only (BSA and azide free) storage buffer at a concentration of 1 mg/mL, ready for conjugation. Created using Proteintech's proprietary in-house recombinant technology. Recombinant production enables unrivalled batch-to-batch consistency, easy scale-up, and future security of supply.

This conjugation ready format makes antibodies ideal for use in many applications including: ELISAs, multiplex assays requiring matched pairs, mass cytometry, and multiplex imaging applications. Antibody use should be optimized by the end user for each application and assay.

Storage

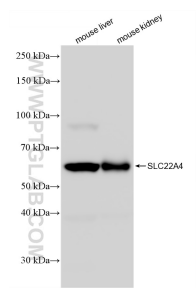
Storage:
Store at -80°C.

Storage Buffer:
PBS Only

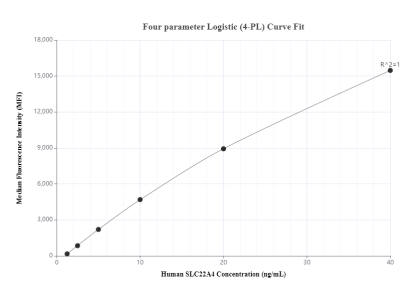
For technical support and original validation data for this product please contact:
T: 1 (888) 4PTGLAB (1-888-478-4522) (toll free in USA), or 1(312) 455-8498 (outside USA)
E: proteintech@ptglab.com
W: ptglab.com

This product is exclusively available under Proteintech Group brand and is not available to purchase from any other manufacturer.

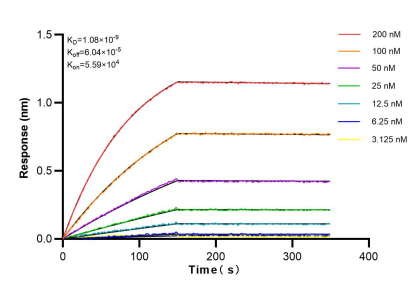
Selected Validation Data



Various lysates were subjected to SDS PAGE followed by western blot with 83192-1-RR (SLC22A4 antibody) at dilution of 1:10000 incubated at room temperature for 1.5 hours. This data was developed using the same antibody clone with 83192-1-PBS in a different storage buffer formulation.



Cytometric bead array standard curve of MP00292-3, SLC22A4 Recombinant Matched Antibody Pair, PBS Only. Capture antibody: 83192-4-PBS. Detection antibody: 83192-1-PBS. Standard: Ag3974. Range: 1.25-40 ng/mL.



Biolayer interferometry (BLI) kinetic assays of 83192-1-RR against Human SLC22A4 were performed. The affinity constant is 1.08 nM.