

For Research Use Only

IGFBP4 Recombinant antibody, PBS Only (Detector)

Catalog Number: 83200-1-PBS



Basic Information

Catalog Number: 83200-1-PBS	GenBank Accession Number: NM_001552.3	Purification Method: Protein A purification
Size: 100ug, Concentration: 1mg/ml by Nanodrop;	GeneID (NCBI): 3487	CloneNo.: 230543B11
Source: Rabbit	UNIPROT ID: P22692-1	
Isotype: IgG	Full Name: insulin-like growth factor binding protein 4	
	Calculated MW: 28 kDa	

Applications

Tested Applications:
Cytometric bead array, Sandwich ELISA, Indirect ELISA, Sample test

Species Specificity:
human

Product Information

83200-1-PBS targets IGFBP4 as part of a matched antibody pair:

MP00279-1: 83200-2-PBS capture and 83200-1-PBS detection (validated in Cytometric bead array)

MP00279-2: 83200-4-PBS capture and 83200-1-PBS detection (validated in Sandwich ELISA)

Unconjugated rabbit recombinant monoclonal antibody in PBS only (BSA and azide free) storage buffer at a concentration of 1 mg/mL, ready for conjugation. Created using Proteintech's proprietary in-house recombinant technology. Recombinant production enables unrivalled batch-to-batch consistency, easy scale-up, and future security of supply.

This conjugation ready format makes antibodies ideal for use in many applications including: ELISAs, multiplex assays requiring matched pairs, mass cytometry, and multiplex imaging applications. Antibody use should be optimized by the end user for each application and assay.

Storage

Storage:
Store at -80°C.

Storage Buffer:
PBS Only

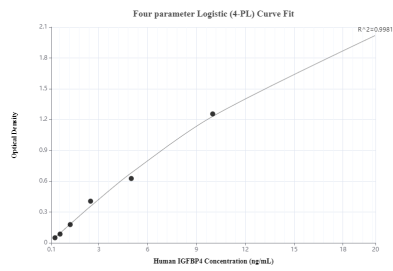
For technical support and original validation data for this product please contact:

T: 1 (888) 4PTGLAB (1-888-478-4522) (toll free in USA), or 1(312) 455-8498 (outside USA)

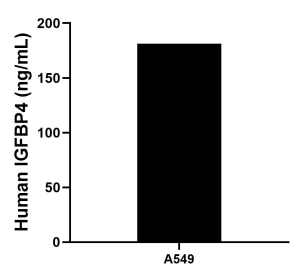
E: proteintech@ptglab.com
W: ptglab.com

This product is exclusively available under Proteintech Group brand and is not available to purchase from any other manufacturer.

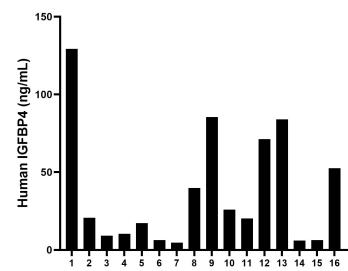
Selected Validation Data



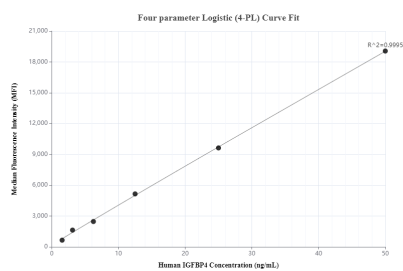
Sandwich ELISA standard curve of MP00279-2, Human IGFBP4 Recombinant Matched Antibody Pair - PBS only. 83200-4-PBS was coated to a plate as the capture antibody and incubated with serial dilutions of standard Eg0825. 83200-1-PBS was HRP conjugated as the detection antibody. Range: 0.313-20 ng/mL



A549 were cultured in DMEM supplemented with 10% fetal bovine serum, 2.5 mM L-glutamine, 100 U/mL penicillin, and 100 µg/mL streptomycin sulfate. The mean IGFBP4 concentration was determined to be 181.3 ng/mL in A549 cell supernatant.



Serum of sixteen individual healthy human donors was measured. The IGFBP4 concentration of detected samples was determined to be 36.9 ng/mL with a range of 4.7 - 129.3 ng/mL



Cytometric bead array standard curve of MP00279-1, Human IGFBP4 Recombinant Matched Antibody Pair, PBS Only. Capture antibody: 83200-2-PBS. Detection antibody: 83200-1-PBS. Standard: Eg0825. Range: 1.56-50 ng/mL