

For Research Use Only

ATP6 Recombinant antibody, PBS Only

Catalog Number: 83201-3-PBS



Basic Information

Catalog Number: 83201-3-PBS	GenBank Accession Number: J01415	Purification Method: Protein A purification
Size: 100ug , Concentration: 1 mg/ml by Nanodrop;	GeneID (NCBI): 4508	CloneNo.: 240041B6
Source: Rabbit	UNIPROT ID: P00846	
Isotype: IgG	Full Name: ATP synthase 6; ATPase subunit 6	
	Calculated MW: 25 kDa	

Applications

Tested Applications:
IF/ICC, IF-P, FC (Intra), Indirect ELISA

Species Specificity:
human

Background Information

ATP synthase, also known as FoF1 complex, is a critical mitochondrial OXPHOS enzyme involved in the regulation of mitochondrial ATP production and in the maintenance of the mitochondrial membrane potential. It is composed of three components (F1, Fo and the peripheral stalk). F1, the soluble catalytic core, is above the membrane, inside the matrix of the mitochondria; consists of 5 different subunits (alpha, beta, gamma, delta, and epsilon); Fo, comprising the proton channel, is within the membrane; Fo seems to have nine subunits (a, b, c, d, e, f, g, F6 and 8). ATP6 is the a subunit of Fo region.

Storage

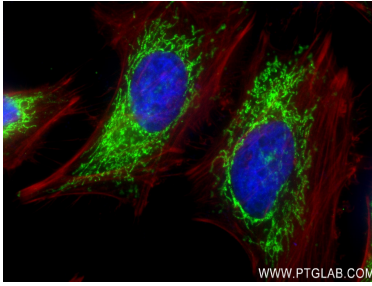
Storage:
Store at -80°C.

Storage Buffer:
PBS Only

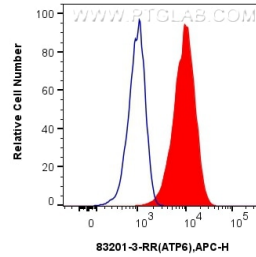
For technical support and original validation data for this product please contact:
T: 1 (888) 4PTGLAB (1-888-478-4522) (toll free in USA), or 1(312) 455-8498 (outside USA)
E: proteintech@ptglab.com
W: ptglab.com

This product is exclusively available under Proteintech Group brand and is not available to purchase from any other manufacturer.

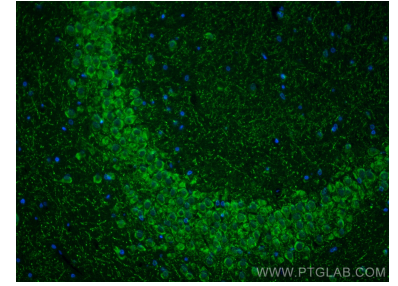
Selected Validation Data



Immunofluorescent analysis of (4% PFA) fixed HeLa cells using ATP6 antibody (83201-3-RR, Clone: 240041B6) at dilution of 1:300 and CoraLite® 488-Conjugated AffiniPure Goat Anti-Mouse IgG(H+L) (SA00013-1), CL594-Phalloidin (red). This data was developed using the same antibody clone with 83201-3-PBS in a different storage buffer formulation.



1x10⁶ U2OS cells were intracellularly stained with 0.25 ug ATP6 Recombinant antibody (83201-3-RR, Clone:240041B6) and APC-Conjugated AffiniPure Goat Anti-Rabbit IgG(H+L)(red), or 0.25 ug Isotype Control (blue). Cells were fixed with 4% PFA and permeabilized with Flow Cytometry Perm Buffer (PF00011-C). This data was developed using the same antibody clone with 83201-3-PBS in a different storage buffer formulation.



Immunofluorescent analysis of (4% PFA) fixed paraffin-embedded rat brain tissue using ATP6 antibody (83201-3-RR, Clone: 240041B6) at dilution of 1:350 and Multi-rAb CoraLite® Plus 488-Goat Anti-Rabbit Recombinant Secondary Antibody (H+L) (RGAR002). Heat mediated antigen retrieval with Tris-EDTA buffer (pH 9.0). This data was developed using the same antibody clone with 83201-3-PBS in a different storage buffer formulation.