

For Research Use Only

# HAS2 Recombinant antibody, PBS Only (Capture)

Catalog Number: 83204-2-PBS

Featured Product



## Basic Information

Catalog Number:

83204-2-PBS

Size:

100ug, Concentration: 1 mg/ml by Nanodrop;

Source:

Rabbit

Isotype:

IgG

Immunogen Catalog Number:

AG34945

GenBank Accession Number:

BC069353

GeneID (NCBI):

3037

UNIPROT ID:

Q92819

Full Name:

hyaluronan synthase 2

Calculated MW:

552 aa, 64 kDa

Purification Method:

Protein A purification

CloneNo.:

240061G4

## Applications

Tested Applications:

WB, Cytometric bead array, Indirect ELISA

Species Specificity:

human, mouse

## Product Information

83204-2-PBS targets HAS2 as part of a matched antibody pair:

MP00153-1: 83204-2-PBS capture and 83204-1-PBS detection (validated in Cytometric bead array)

MP00153-3: 83204-2-PBS capture and 83204-3-PBS detection (validated in Cytometric bead array)

Unconjugated rabbit recombinant monoclonal antibody in PBS only (BSA and azide free) storage buffer at a concentration of 1 mg/mL, ready for conjugation. Created using Proteintech's proprietary in-house recombinant technology. Recombinant production enables unrivalled batch-to-batch consistency, easy scale-up, and future security of supply.

This conjugation ready format makes antibodies ideal for use in many applications including: ELISAs, multiplex assays requiring matched pairs, mass cytometry, and multiplex imaging applications. Antibody use should be optimized by the end user for each application and assay.

## Storage

Storage:

Store at -80°C.

Storage Buffer:

PBS Only

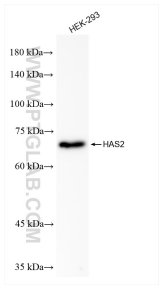
For technical support and original validation data for this product please contact:

T: 1 (888) 4PTGLAB (1-888-478-4522) (toll free in USA), or 1(312) 455-8498 (outside USA)

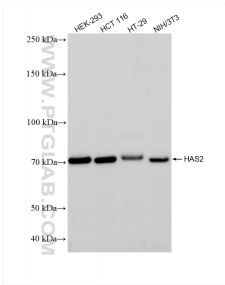
E: [proteintech@ptglab.com](mailto:proteintech@ptglab.com)  
W: [ptglab.com](http://ptglab.com)

This product is exclusively available under Proteintech Group brand and is not available to purchase from any other manufacturer.

Selected Validation Data



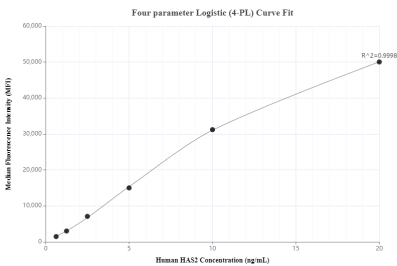
HEK-293 cells were subjected to SDS PAGE followed by western blot with 83204-2-RR (HAS2 antibody) at dilution of 1:2000 incubated at room temperature for 1.5 hours. This data was developed using the same antibody clone with 83204-2-PBS in a different storage buffer formulation.



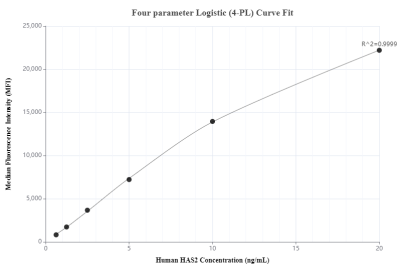
Various lysates were subjected to SDS PAGE followed by western blot with 83204-2-RR (HAS2 antibody) at dilution of 1:500 incubated at room temperature for 1.5 hours. This data was developed using the same antibody clone with 83204-2-PBS in a different storage buffer formulation.



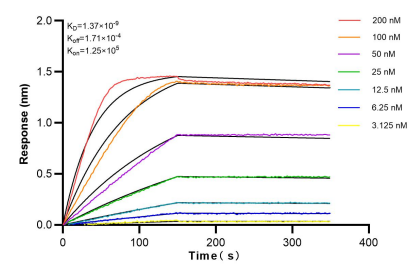
WB result of HAS2 antibody (83204-2-RR; 1:400; incubated at room temperature for 1.5 hours) with sh-Control and sh-HAS2 transfected HEK-293 cells. This data was developed using the same antibody clone with 83204-2-PBS in a different storage buffer formulation.



Cytometric bead array standard curve of MP00153-1, HAS2 Recombinant Matched Antibody Pair, PBS Only. Capture antibody: 83204-2-PBS. Detection antibody: 83204-1-PBS. Standard: Ag34945. Range: 0.625-20 ng/mL.



Cytometric bead array standard curve of MP00153-3, HAS2 Recombinant Matched Antibody Pair, PBS Only. Capture antibody: 83204-2-PBS. Detection antibody: 83204-3-PBS. Standard: Ag34945. Range: 0.625-20 ng/mL.



Biolayer interferometry (BLI) kinetic assays of 83204-2-RR against Human HAS2 were performed. The affinity constant is 1.37 nM.