

For Research Use Only

KLF5 Recombinant antibody, PBS Only

Catalog Number: 83205-4-PBS



Basic Information

Catalog Number:

83205-4-PBS

Size:

100ug, Concentration: 1 mg/ml by Nanodrop;

Source:

Rabbit

Isotype:

IgG

Immunogen Catalog Number:

AG15267

GenBank Accession Number:

BC042131

GeneID (NCBI):

688

UNIPROT ID:

Q13887

Full Name:

Kruppel-like factor 5 (intestinal)

Calculated MW:

457 aa, 51 kDa

Purification Method:

Protein A purification

CloneNo.:

230509G7

Applications

Tested Applications:

IF/ICC, FC (Intra), ELISA

Species Specificity:

human

Storage

Storage:

Store at -80°C.

Storage Buffer:

PBS Only

For technical support and original validation data for this product please contact:

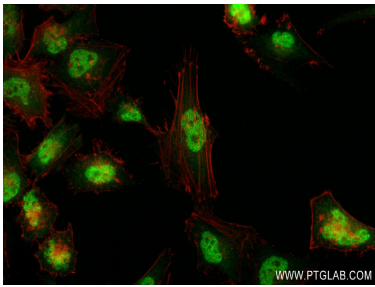
T: 1 (888) 4PTGLAB (1-888-478-4522) (toll free in USA), or 1(312) 455-8498 (outside USA)

E: proteintech@ptglab.com

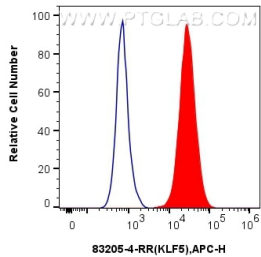
W: ptglab.com

This product is exclusively available under Proteintech Group brand and is not available to purchase from any other manufacturer.

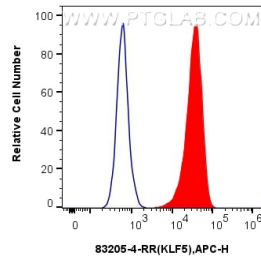
Selected Validation Data



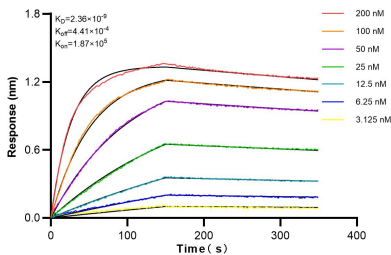
Immunofluorescent analysis of (4% PFA) fixed HeLa cells using KLF5 antibody (83205-4-RR, Clone: 230509G7) at dilution of 1:800 and CoraLite®488-Conjugated Goat Anti-Rabbit IgG(H+L) (SA00013-2), CL594-Phalloidin (red). This data was developed using the same antibody clone with 83205-4-PBS in a different storage buffer formulation.



1x10⁶ A549 cells were intracellularly stained with 0.25 ug Klf5 Recombinant Antibody (83205-4-RR, Clone:230509G7) and APC-Conjugated Goat Anti-Rabbit IgG(H+L)(red), or 0.25 ug Isotype Control (blue). Cells were fixed and permeabilized with Transcription Factor Staining Buffer Kit (PF00011). This data was developed using the same antibody clone with 83205-4-PBS in a different storage buffer formulation.



1x10⁶ HT-29 cells were intracellularly stained with 0.25 ug Klf5 Recombinant Antibody (83205-4-RR, Clone:230509G7) and APC-Conjugated Goat Anti-Rabbit IgG(H+L)(red), or 0.25 ug Isotype Control (blue). Cells were fixed and permeabilized with Transcription Factor Staining Buffer Kit (PF00011). This data was developed using the same antibody clone with 83205-4-PBS in a different storage buffer formulation.



Bioluminescence resonance transfer (BLI) kinetic assays of 83205-4-RR against Human KLF5 were performed. The affinity constant is 2.36 nM.