

For Research Use Only

# KLF5 Recombinant antibody

Catalog Number: 83205-4-RR



## Basic Information

<b>Catalog Number:</b> 83205-4-RR	<b>GenBank Accession Number:</b> BC042131	<b>Purification Method:</b> Protein A purification
<b>Size:</b> 100ul , Concentration: 1000 ug/ml by Nanodrop;	<b>GeneID (NCBI):</b> 688	<b>CloneNo.:</b> 230509G7
<b>Source:</b> Rabbit	<b>UNIPROT ID:</b> Q13887	<b>Recommended Dilutions:</b> IF/ICC 1:250-1:1000
<b>Isotype:</b> IgG	<b>Full Name:</b> Kruppel-like factor 5 (intestinal)	
<b>Immunogen Catalog Number:</b> AG15267	<b>Calculated MW:</b> 457 aa, 51 kDa	
	<b>Observed MW:</b> 51-57 kDa	

## Applications

<b>Tested Applications:</b> IF/ICC, FC (Intra), ELISA	<b>Positive Controls:</b> IF/ICC : HeLa cells,
<b>Species Specificity:</b> human	

## Background Information

KLF5, also known as BTEB2 and IKLF, is a member of the Krueppel-like transcription factor family. It is a transcription factor for SMemb/non-muscle myosin heavy chain-B (NMHC-B). It is a molecular marker of phenotypically modulated smooth-muscle cells. KLF5 seems to be a key element linking external stress and cardiovascular remodeling.

## Storage

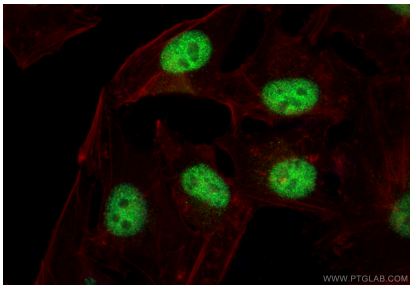
**Storage:**  
Store at -20°C. Stable for one year after shipment.  
**Storage Buffer:**  
PBS with 0.02% sodium azide and 50% glycerol pH 7.3.  
**Aliquoting is unnecessary for -20°C storage**

\*\*\* 20ul sizes contain 0.1% BSA

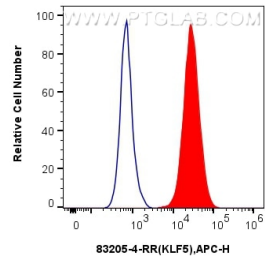
For technical support and original validation data for this product please contact:  
T: 1 (888) 4PTGLAB (1-888-478-4522) (toll free in USA), or 1(312) 455-8498 (outside USA)  
E: [proteintech@ptglab.com](mailto:proteintech@ptglab.com)  
W: [ptglab.com](http://ptglab.com)

This product is exclusively available under Proteintech Group brand and is not available to purchase from any other manufacturer.

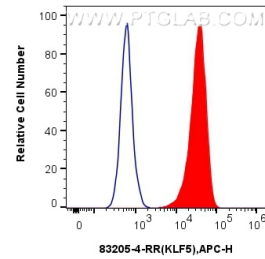
## Selected Validation Data



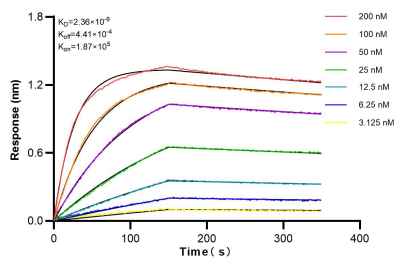
Immunofluorescent analysis of (4% PFA) fixed HeLa cells using KLF5 antibody (83205-4-RR, Clone: 230509G7 ) at dilution of 1:500 and CoraLite®488-Conjugated Goat Anti-Rabbit IgG(H+L) (SA00013-2), CL594-Phalloidin (red).



1x10<sup>6</sup> A549 cells were intracellularly stained with 0.25 ug Klf5 Recombinant Antibody (83205-4-RR, Clone:230509G7) and APC-Conjugated AffiniPure Goat Anti-Rabbit IgG(H+L)(red), or 0.25 ug Isotype Control (blue). Cells were fixed and permeabilized with Transcription Factor Staining Buffer Kit (PF00011).



1x10<sup>6</sup> HT-29 cells were intracellularly stained with 0.25 ug Klf5 Recombinant Antibody (83205-4-RR, Clone:230509G7) and APC-Conjugated AffiniPure Goat Anti-Rabbit IgG(H+L)(red), or 0.25 ug Isotype Control (blue). Cells were fixed and permeabilized with Transcription Factor Staining Buffer Kit (PF00011).



Bi-layer interferometry (BLI) kinetic assays of 83205-4-RR against Human KLF5 were performed. The affinity constant is 2.36 nM.