

For Research Use Only

Mouse Il6ra Recombinant antibody, PBS Only (Capture/Detector)

Catalog Number: 83209-2-PBS



Basic Information

Catalog Number: 83209-2-PBS	GenBank Accession Number: NM_010559.3	Purification Method: Protein A purification
Size: 100ug , Concentration: 1mg/ml by Nanodrop;	GeneID (NCBI): 16194	CloneNo.: 230371E7
Source: Rabbit	UNIPROT ID: P22272	
Isotype: IgG	Full Name: interleukin 6 receptor, alpha	
	Calculated MW: 50KD	

Applications

Tested Applications:
Cytometric bead array, Sandwich ELISA, Indirect ELISA, Sample test

Species Specificity:
mouse

Product Information

83209-2-PBS targets Il6ra as part of a matched antibody pair:

MP00182-1: 83209-2-PBS capture and 83209-1-PBS detection (validated in Cytometric bead array)

MP00182-2: 98024-1-PBS capture and 83209-2-PBS detection (validated in Sandwich ELISA)

Unconjugated rabbit recombinant monoclonal antibody in PBS only (BSA and azide free) storage buffer at a concentration of 1 mg/mL, ready for conjugation. Created using Proteintech's proprietary in-house recombinant technology. Recombinant production enables unrivalled batch-to-batch consistency, easy scale-up, and future security of supply.

This conjugation ready format makes antibodies ideal for use in many applications including: ELISAs, multiplex assays requiring matched pairs, mass cytometry, and multiplex imaging applications. Antibody use should be optimized by the end user for each application and assay.

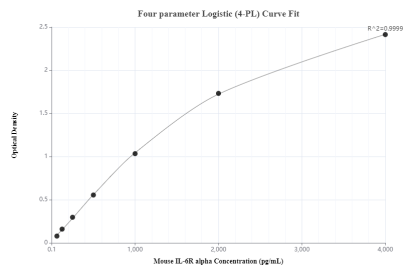
Storage

Storage:
Store at -80°C.
Storage Buffer:
PBS Only

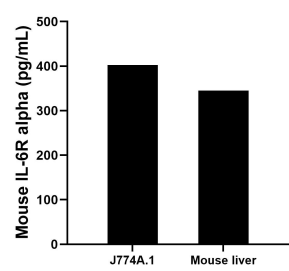
For technical support and original validation data for this product please contact:
T: 1 (888) 4PTGLAB (1-888-478-4522) (toll free in USA), or 1(312) 455-8498 (outside USA)
E: proteintech@ptglab.com
W: ptglab.com

This product is exclusively available under Proteintech Group brand and is not available to purchase from any other manufacturer.

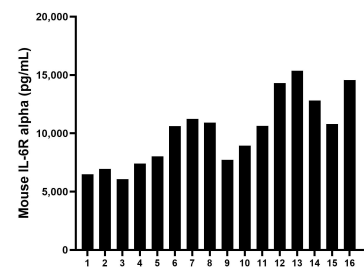
Selected Validation Data



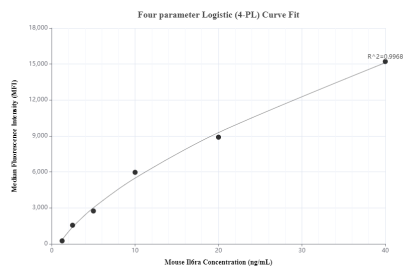
Sandwich ELISA standard curve of MP00182-2, Mouse CD126/IL-6R alpha Monoclonal Matched Antibody Pair - PBS only. 98024-1-PBS was coated to a plate as the capture antibody and incubated with serial dilutions of standard Eg0664. 83209-2-PBS was HRP conjugated as the detection antibody. Range: 62.5-4000 pg/mL



J774A.1 mouse reticulum cell sarcoma macrophage cells (1 x 10⁶ cells/mL) were cultured for 3 days in DMEM containing 10% fetal bovine serum. An aliquot of the cell culture supernatants were removed, assayed for mouse IL-6R alpha, and measured 402.5 pg/mL. Liver tissue from one mouse was homogenized and seeded into 100 mL of RPMI containing 10% fetal bovine serum, 2 mM L-glutamine, 100 U/mL penicillin, 100 µg/mL streptomycin sulfate, and 50 µM β-



Serum of sixteen mice were measured. The IL-6R alpha concentration of detected samples was determined to be 10,180.3 pg/mL with a range of 6,065.2-15,362.2 pg/mL



Cytometric bead array standard curve of MP00182-1, Mouse CD126/IL-6R alpha Recombinant Matched Antibody Pair, PBS Only. Capture antibody: 83209-2-PBS. Detection antibody: 83209-1-PBS. Standard: Eg0664. Range: 1.25-40 ng/mL