

For Research Use Only

# LAMA3 Recombinant antibody, PBS Only (Detector)

Catalog Number: 83210-2-PBS



## Basic Information

**Catalog Number:**

83210-2-PBS

**Size:**

100ug, Concentration: 1mg/ml by Nanodrop;

**Source:**

Rabbit

**Isotype:**

IgG

**GenBank Accession Number:**

NM\_000227

**GeneID (NCBI):**

3909

**UNIPROT ID:**

Q16787

**Full Name:**

laminin, alpha 3

**Calculated MW:**

367 kDa

**Observed MW:**

260 kDa

**Purification Method:**

Protein A purification

**CloneNo.:**

230443C1

## Applications

**Tested Applications:**

WB, IHC, Cytometric bead array, Sandwich ELISA, Indirect ELISA, Sample test

**Species Specificity:**

human

## Product Information

83210-2-PBS targets LAMA3 as part of a matched antibody pair:

MP00186-2: 83210-1-PBS capture and 83210-2-PBS detection (validated in Cytometric bead array, Sandwich ELISA)

MP00186-3: 83210-4-PBS capture and 83210-2-PBS detection (validated in Cytometric bead array)

Unconjugated rabbit recombinant monoclonal antibody in PBS only (BSA and azide free) storage buffer at a concentration of 1 mg/mL, ready for conjugation. Created using Proteintech's proprietary in-house recombinant technology. Recombinant production enables unrivalled batch-to-batch consistency, easy scale-up, and future security of supply.

This conjugation ready format makes antibodies ideal for use in many applications including: ELISAs, multiplex assays requiring matched pairs, mass cytometry, and multiplex imaging applications. Antibody use should be optimized by the end user for each application and assay.

## Background Information

Laminin subunit alpha 3 (LAMA3) expression is mediated by an epithelial enhancer via a synergistic effect of AP-1 binding sites.<sup>10</sup> LAMA3 has been implicated in the invasion and progression of tumor cells and encodes for the  $\alpha 3$  chain of laminin-5 ( $\alpha 3$ ,  $\beta 3$ ,  $\gamma 2$ , 332). Its dysfunction manifests as a blistering skin disease similar to junctional epidermolysis bullosa in humans. (PMID: 31557618)

## Storage

**Storage:**

Store at -80°C.

**Storage Buffer:**

PBS Only

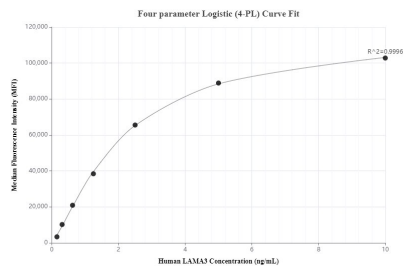
For technical support and original validation data for this product please contact:

T: 1 (888) 4PTGLAB (1-888-478-4522) (toll free in USA), or 1(312) 455-8498 (outside USA)

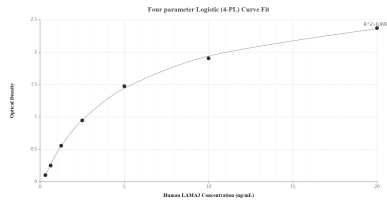
E: [proteintech@ptglab.com](mailto:proteintech@ptglab.com)  
W: [ptglab.com](http://ptglab.com)

This product is exclusively available under Proteintech Group brand and is not available to purchase from any other manufacturer.

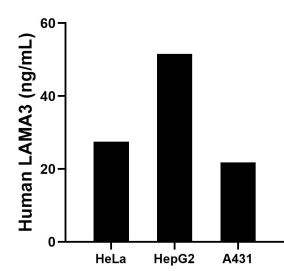
Selected Validation Data



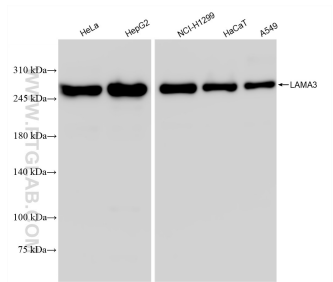
Cytometric bead array standard curve of MP00186-2, LAMA3 Recombinant Matched Antibody Pair, PBS Only. Capture antibody: 83210-1-PBS. Detection antibody: 83210-2-PBS. Standard: SY01122. Range: 0.156-10 ng/mL



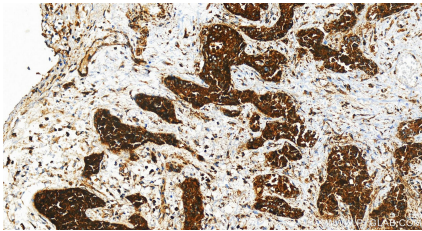
Sandwich ELISA standard curve of MP00186-2, Human LAMA3 Recombinant Matched Antibody Pair - PBS only. 83210-1-PBS was coated to a plate as the capture antibody and incubated with serial dilutions of standard SY01122. 83210-2-PBS was HRP conjugated as the detection antibody. Range: 0.131-20 ng/mL



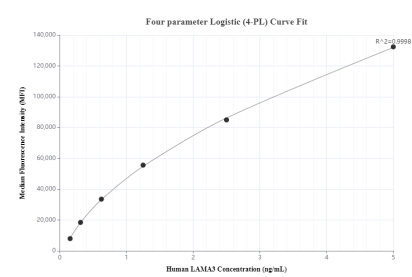
The mean LAMA3 concentration was determined to be 27.50 ng/mL in HeLa cell extract based on a 3.60 mg/mL extract load, 51.60 ng/mL in HepG2 cell extract based on a 5.00 mg/mL extract load and 21.80 ng/mL in A431 cell extract based on a 2.60 mg/mL extract load.



Various lysates were subjected to SDS PAGE followed by western blot with 83210-2-RR (LAMA3 antibody) at dilution of 1:10000 incubated at room temperature for 1.5 hours. This data was developed using the same antibody clone with 83210-2-PBS in a different storage buffer formulation.



Immunohistochemical analysis of paraffin-embedded human intrahepatic cholangiocarcinoma tissue slide using 83210-2-RR (LAMA3 antibody) at dilution of 1:1000 (under 20x lens). Heat mediated antigen retrieval with Tris-EDTA buffer (pH 9.0). This data was developed using the same antibody clone with 83210-2-PBS in a different storage buffer formulation.



Cytometric bead array standard curve of MP00186-3, LAMA3 Recombinant Matched Antibody Pair, PBS Only. Capture antibody: 83210-4-PBS. Detection antibody: 83210-2-PBS. Standard: SY01122. Range: 0.156-5 ng/mL