

For Research Use Only

# LAMA3 Recombinant antibody

Catalog Number: 83210-2-RR



## Basic Information

### Catalog Number:

83210-2-RR

### Size:

100ul, Concentration: 1000 ug/ml by Nanodrop;

### Source:

Rabbit

### Isotype:

IgG

### GenBank Accession Number:

NM\_000227

### GeneID (NCBI):

3909

### UNIPROT ID:

Q16787

### Full Name:

laminin, alpha 3

### Calculated MW:

367 kDa

### Observed MW:

260 kDa

### Purification Method:

Protein A purification

### CloneNo.:

230443C1

### Recommended Dilutions:

WB 1:5000-1:50000

IHC 1:500-1:2000

## Applications

### Tested Applications:

WB, IHC, ELISA

### Species Specificity:

human

**Note-IHC: suggested antigen retrieval with TE buffer pH 9.0; (\*) Alternatively, antigen retrieval may be performed with citrate buffer pH 6.0**

### Positive Controls:

WB : HeLa cells, HepG2 cells, NCI-H1299 cells, HaCaT cells, A549 cells

IHC : human intrahepatic cholangiocarcinoma tissue,

## Background Information

Laminin subunit alpha 3 (LAMA3) expression is mediated by an epithelial enhancer via a synergistic effect of AP-1 binding sites. LAMA3 has been implicated in the invasion and progression of tumor cells and encodes for the  $\alpha 3$  chain of laminin-5 ( $\alpha 3$ ,  $\beta 3$ ,  $\gamma 2$ , 332). Its dysfunction manifests as a blistering skin disease similar to junctional epidermolysis bullosa in humans. (PMID: 31557618)

## Storage

### Storage:

Store at -20°C. Stable for one year after shipment.

### Storage Buffer:

PBS with 0.02% sodium azide and 50% glycerol pH 7.3.

Aliquoting is unnecessary for -20°C storage

\*\*\* 20ul sizes contain 0.1% BSA

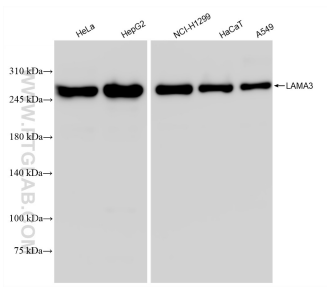
For technical support and original validation data for this product please contact:

T: 1 (888) 4PTGLAB (1-888-478-4522) (toll free in USA), or 1(312) 455-8498 (outside USA)

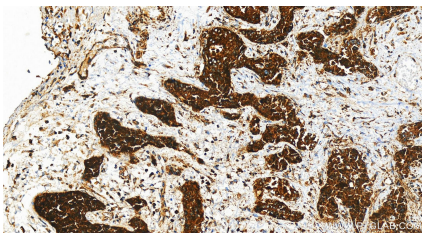
E: [proteintech@ptglab.com](mailto:proteintech@ptglab.com)  
W: [ptglab.com](http://ptglab.com)

This product is exclusively available under Proteintech Group brand and is not available to purchase from any other manufacturer.

## Selected Validation Data



Various lysates were subjected to SDS PAGE followed by western blot with 83210-2-RR (LAMA3 antibody) at dilution of 1:10000 incubated at room temperature for 1.5 hours.



Immunohistochemical analysis of paraffin-embedded human intrahepatic cholangiocarcinoma tissue slide using 83210-2-RR (LAMA3 antibody) at dilution of 1:1000 (under 20x lens). Heat mediated antigen retrieval with Tris-EDTA buffer (pH 9.0).