

For Research Use Only

NCBP1/CBP80 Recombinant antibody, PBS Only

Catalog Number: 83212-4-PBS



Basic Information

Catalog Number: 83212-4-PBS	GenBank Accession Number: BC001450	Purification Method: Protein A purification
Size: 100ug , Concentration: 1mg/ml by Nanodrop;	GeneID (NCBI): 4686	CloneNo.: 240012G8
Source: Rabbit	UNIPROT ID: Q09161	
Isotype: IgG	Full Name: nuclear cap binding protein subunit 1, 80kDa	
Immunogen Catalog Number: AG0496	Calculated MW: 92 kDa	
	Observed MW: 80 kDa	

Applications

Tested Applications:
WB, IHC, IF/ICC, FC (Intra), ELISA

Species Specificity:
human, rat

Background Information

Nuclear cap binding protein subunit 1, 80kDa (NCBP1, synonyms: NCBP, CBP80) is a subunit of a cap-binding protein complex (CBC) that consists of a CBP20 subunit, which binds the cap, and a NCBP1 subunit, which ensures high-affinity cap binding. The CBC complex may play a role in pre-mRNA recognition and splicing.

Storage

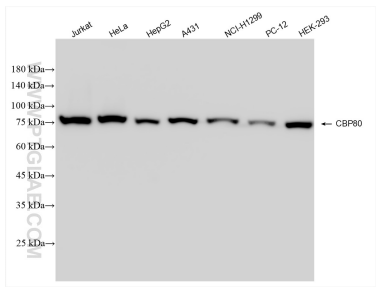
Storage:
Store at -80°C.

Storage Buffer:
PBS Only

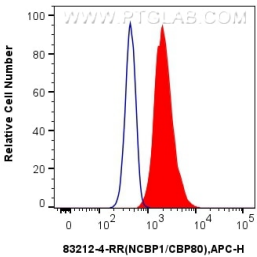
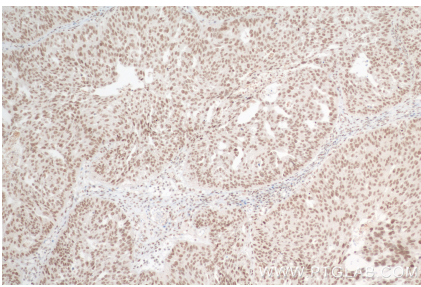
For technical support and original validation data for this product please contact:
T: 1 (888) 4PTGLAB (1-888-478-4522) (toll free in USA), or 1(312) 455-8498 (outside USA)
E: proteintech@ptglab.com
W: ptglab.com

This product is exclusively available under Proteintech Group brand and is not available to purchase from any other manufacturer.

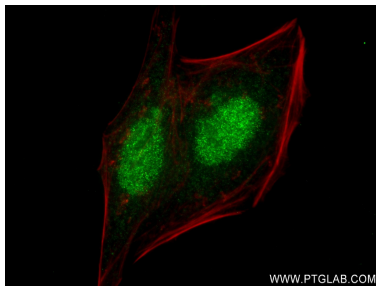
Selected Validation Data



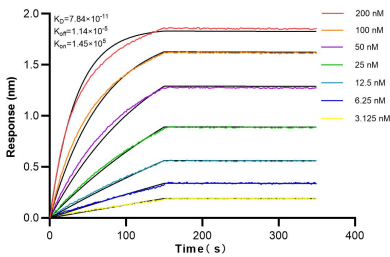
Various lysates were subjected to SDS PAGE followed by western blot with 83212-4-RR (CBP80 antibody) at dilution of 1:10000 incubated at room temperature for 1.5 hours. This data was developed using the same antibody clone with 83212-4-PBS in a different storage buffer formulation.



1x10⁶ HepG2 cells were intracellularly stained with 0.25 ug CBP80 Recombinant antibody (83212-4-RR, Clone:240012G8) and APC-Conjugated AffiniPure Goat Anti-Rabbit IgG(H+L)(red), or 0.25 ug Isotype Control (blue). Cells were fixed with 4% PFA and permeabilized with Flow Cytometry Perm Buffer (PF00011-C). This data was developed using the same antibody clone with 83212-4-PBS in a different storage buffer formulation.



Immunofluorescent analysis of (4% PFA) fixed HepG2 cells using CBP80 antibody (83212-4-RR, Clone: 240012G8) at dilution of 1:400 and CoraLite®488-Conjugated AffiniPure Goat Anti-Rabbit IgG(H+L) (SA00013-2), CL594-Phalloidin (red). This data was developed using the same antibody clone with 83212-4-PBS in a different storage buffer formulation.



Biolayer interferometry (BLI) kinetic assays of 83212-4-RR against Human CBP80 were performed. The affinity constant is 0.131 nM.