

NCBP1/CBP80 Recombinant antibody

Catalog Number: 83212-4-RR

Basic Information

| | | |
|--|---|---|
| Catalog Number: 83212-4-RR | GenBank Accession Number: BC001450 | Purification Method: Protein A purification |
| Size: 100ul , Concentration: 1000 ug/ml by Nanodrop; | GeneID (NCBI): 4686 | CloneNo.: 240012G8 |
| Source: Rabbit | UNIPROT ID: Q09161 | Recommended Dilutions: WB 1:5000-1:50000 IHC 1:200-1:800 IF/ICC 1:200-1:800 |
| Isotype: IgG | Full Name: nuclear cap binding protein subunit 1, 80kDa | |
| Immunogen Catalog Number: AG0496 | Calculated MW: 92 kDa | |
| | Observed MW: 80 kDa | |

Applications

| | |
|--|--|
| Tested Applications: WB, IHC, IF/ICC, FC (Intra), ELISA | Positive Controls: |
| Species Specificity: human, rat | WB : Jurkat cells, HeLa cells, HepG2 cells, A431 cells, NCI-H1299 cells, PC-12 cells, HEK-293 cells |
| Note-IHC: suggested antigen retrieval with TE buffer pH 9.0; (*) Alternatively, antigen retrieval may be performed with citrate buffer pH 6.0 | IHC : human ovary cancer tissue, |
| | IF/ICC : HepG2 cells, |

Background Information

Nuclear cap binding protein subunit 1, 80kDa (NCBP1, synonyms: NCBP, CBP80) is a subunit of a cap-binding protein complex (CBC) that consists of a CBP20 subunit, which binds the cap, and a NCBP1 subunit, which ensures high-affinity cap binding. The CBC complex may play a role in pre-mRNA recognition and splicing.

Storage

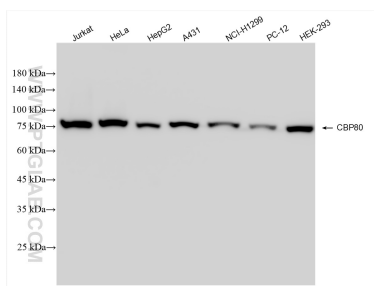
Storage:
Store at -20°C. Stable for one year after shipment.
Storage Buffer:
PBS with 0.02% sodium azide and 50% glycerol pH 7.3.
Aliquoting is unnecessary for -20°C storage

*** 20ul sizes contain 0.1% BSA

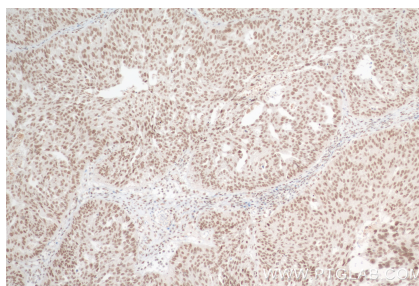
For technical support and original validation data for this product please contact:
T: 1 (888) 4PTGLAB (1-888-478-4522) (toll free in USA), or 1(312) 455-8498 (outside USA)
E: proteintech@ptglab.com
W: ptglab.com

This product is exclusively available under Proteintech Group brand and is not available to purchase from any other manufacturer.

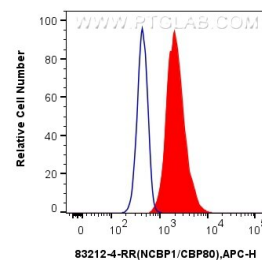
Selected Validation Data



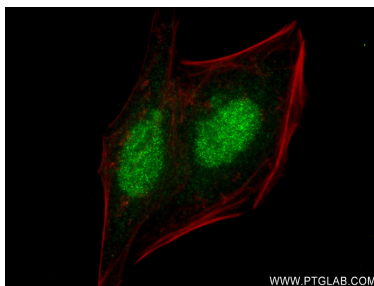
Various lysates were subjected to SDS PAGE followed by western blot with 83212-4-RR (CBP80 antibody) at dilution of 1:10000 incubated at room temperature for 1.5 hours.



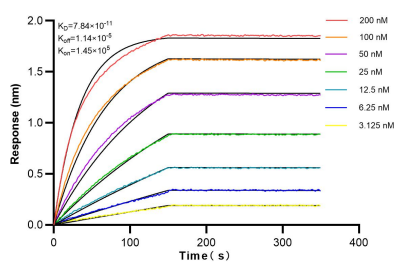
Immunohistochemical analysis of paraffin-embedded human ovary cancer tissue slide using 83212-4-RR (NCBP1/CBP80 antibody) at dilution of 1:400 (under 10x lens). Heat mediated antigen retrieval with Tris-EDTA buffer (pH 9.0).



1x10⁶ HepG2 cells were intracellularly stained with 0.25 ug CBP80 Recombinant antibody (83212-4-RR, Clone:240012G8) and APC-Conjugated AffiniPure Goat Anti-Rabbit IgG(H+L)(red), or 0.25 ug Isotype Control (blue). Cells were fixed with 4% PFA and permeabilized with Flow Cytometry Perm Buffer (PF00011-C).



Immunofluorescent analysis of (4% PFA) fixed HepG2 cells using CBP80 antibody (83212-4-RR, Clone: 240012G8) at dilution of 1:400 and CoraLite®488-Conjugated AffiniPure Goat Anti-Rabbit IgG(H+L) (SA00013-2), CL594-Phalloidin (red).



Biolayer interferometry (BLI) kinetic assays of 83212-4-RR against Human CBP80 were performed. The affinity constant is 0.131 nM.