

For Research Use Only

# Mouse CD86 Recombinant antibody, PBS Only (Detector)



Catalog Number: 83213-1-PBS

## Basic Information

<b>Catalog Number:</b> 83213-1-PBS	<b>GenBank Accession Number:</b> NM_019388	<b>Purification Method:</b> Protein A purification
<b>Size:</b> 100ug , Concentration: 1 mg/ml by Nanodrop;	<b>GeneID (NCBI):</b> 12524	<b>CloneNo.:</b> 230476B2
<b>Source:</b> Rabbit	<b>UNIPROT ID:</b> P42082-1	
<b>Isotype:</b> IgG	<b>Full Name:</b> CD86 antigen	
	<b>Calculated MW:</b> 35 kDa	

## Applications

**Tested Applications:**  
IF/ICC, Indirect ELISA, Cytometric bead array

**Species Specificity:**  
Mouse

## Product Information

83213-1-PBS targets CD86 as part of a matched antibody pair:

MP00195-3: 83213-2-PBS capture and 83213-1-PBS detection (validated in Cytometric bead array)

Unconjugated rabbit recombinant monoclonal antibody in PBS only (BSA and azide free) storage buffer at a concentration of 1 mg/mL, ready for conjugation. Created using Proteintech's proprietary in-house recombinant technology. Recombinant production enables unrivalled batch-to-batch consistency, easy scale-up, and future security of supply.

This conjugation ready format makes antibodies ideal for use in many applications including: ELISAs, multiplex assays requiring matched pairs, mass cytometry, and multiplex imaging applications. Antibody use should be optimized by the end user for each application and assay.

## Storage

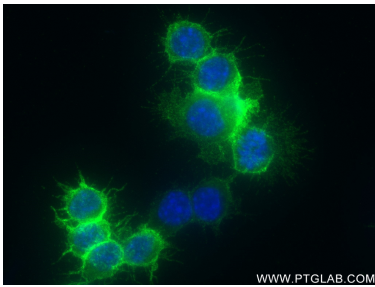
**Storage:**  
Store at -80°C.

**Storage Buffer:**  
PBS Only

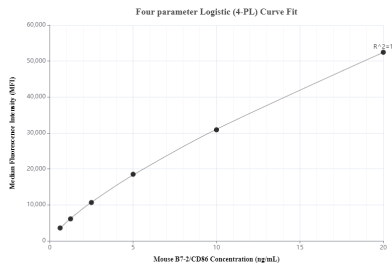
For technical support and original validation data for this product please contact:  
T: 1 (888) 4PTGLAB (1-888-478-4522) (toll free in USA), or 1(312) 455-8498 (outside USA)  
E: [proteintech@ptglab.com](mailto:proteintech@ptglab.com)  
W: [ptglab.com](http://ptglab.com)

This product is exclusively available under Proteintech Group brand and is not available to purchase from any other manufacturer.

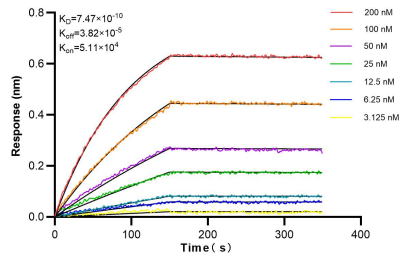
## Selected Validation Data



Immunofluorescent analysis of (4% PFA) fixed RAW 264.7 cells using CD86 antibody (83213-1-RR, Clone: 230476B2 ) at dilution of 1:250 and CoraLite®488-Conjugated AffiniPure Goat Anti-Rabbit IgG(H+L) (SA00013-2). This data was developed using the same antibody clone with 83213-1-PBS in a different storage buffer formulation.



Cytometric bead array standard curve ofMP00195-3, Mouse Cd86 Recombinant Matched Antibody Pair, PBS Only. Capture antibody: 83213-2-PBS. Detection antibody: 83213-1-PBS. Standard: Eg0802. Range: 0.625-20 ng/mL.



Biolayer interferometry (BLI) kinetic assays of 83213-1-RR against Mouse CD86 were performed. The affinity constant is 0.747 nM.