

For Research Use Only



Mouse B7-2/CD86 Recombinant monoclonal antibody, PBS Only (Detector)

Catalog Number: 83213-9-PBS

Basic Information

Catalog Number: 83213-9-PBS	GenBank Accession Number: NM_019388	Purification Method: Protein A purification
Size: 100ug, Concentration: 1 mg/ml by Nanodrop;	GeneID (NCBI): 12524	CloneNo.: 251860F8
Source: Rabbit	UNIPROT ID: P42082-1	
Isotype: IgG	Full Name: CD86 antigen	
Immunogen Catalog Number: EG0802	Calculated MW: 35 kDa	

Applications

Tested Applications:
Sandwich ELISA, Indirect ELISA

Species Specificity:
mouse

Product Information

83213-9-PBS targets B7-2/CD86 as part of a matched antibody pair.

MP00195-5: 83213-10-PBS capture and 83213-9-PBS detection (validated in Sandwich ELISA)

Unconjugated rabbit recombinant monoclonal antibody in PBS only (BSA and azide free) storage buffer at a concentration of 1 mg/mL, ready for conjugation. Created using Proteintech's proprietary in-house recombinant technology. Recombinant production enables unrivalled batch-to-batch consistency, easy scale-up, and future security of supply.

This conjugation ready format makes antibodies ideal for use in many applications including: ELISAs, multiplex assays requiring matched pairs, mass cytometry, and multiplex imaging applications. Antibody use should be optimized by the end user for each application and assay.

Storage

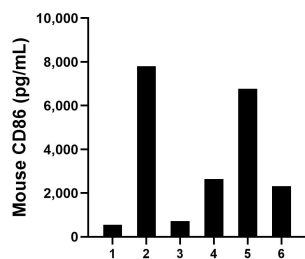
Storage:
Store at -80°C.

Storage Buffer:
PBS only, pH7.3

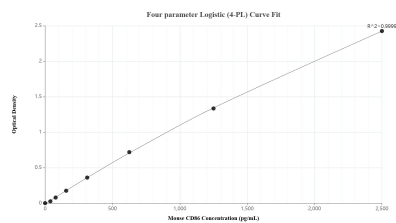
For technical support and original validation data for this product please contact:
T: 1 (888) 4PTGLAB (1-888-478-4522) (toll free in USA), or 1(312) 455-8498 (outside USA)
E: proteintech@ptglab.com
W: ptglab.com

This product is exclusively available under Proteintech Group brand and is not available to purchase from any other manufacturer.

Selected Validation Data



Serum of six mice was measured. The CD86 concentration of detected samples was determined to be 3,467.1 pg/mL with a range of 550.4-7,806.3 pg/mL.



Sandwich ELISA standard curve of MP00195-5, Mouse CD86 Recombinant Matched Antibody Pair - PBS only. 83213-10-PBS was coated to a plate as the capture antibody and incubated with serial dilutions of standard Eg0802. 83213-9-PBS was HRP conjugated as the detection antibody. Range: 39.1-2500 pg/mL.