

For Research Use Only

# NDUFB8 Recombinant antibody, PBS Only

Catalog Number: 83216-3-PBS



## Basic Information

### Catalog Number:

83216-3-PBS

### Size:

100ug, Concentration: 1 mg/ml by Nanodrop;

### Source:

Rabbit

### Isotype:

IgG

### Immunogen Catalog Number:

AG6495

### GenBank Accession Number:

BC000466

### GeneID (NCBI):

4714

### UNIPROT ID:

O95169

### Full Name:

NADH dehydrogenase (ubiquinone) 1 beta subcomplex, 8, 19kDa

### Calculated MW:

22 kDa

### Observed MW:

19-22 kDa

### Purification Method:

Protein A purification

### CloneNo.:

230510B10

## Applications

### Tested Applications:

WB, IHC, IF/ICC, FC (Intra), IP, Indirect ELISA

### Species Specificity:

human, mouse, rat

## Storage

### Storage:

Store at -80°C.

### Storage Buffer:

PBS Only

For technical support and original validation data for this product please contact:

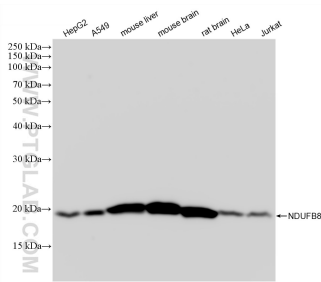
T: 1 (888) 4PTGLAB (1-888-478-4522) (toll free in USA), or 1(312) 455-8498 (outside USA)

E: [proteintech@ptglab.com](mailto:proteintech@ptglab.com)

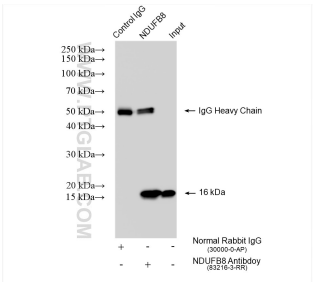
W: [ptglab.com](http://ptglab.com)

This product is exclusively available under Proteintech Group brand and is not available to purchase from any other manufacturer.

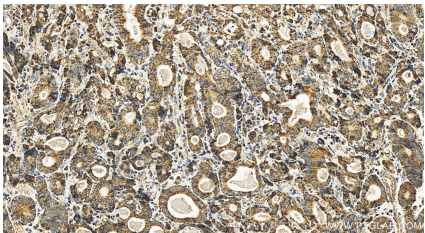
Selected Validation Data



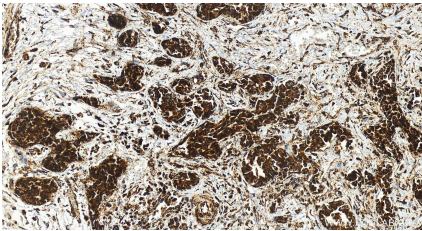
Various lysates were subjected to SDS PAGE followed by western blot with 83216-3-RR (NDUF8 antibody) at dilution of 1:10000 incubated at room temperature for 1.5 hours. This data was developed using the same antibody clone with 83216-3-PBS in a different storage buffer formulation.



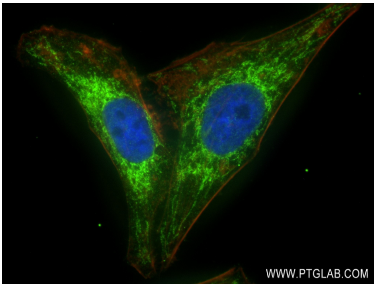
IP result of anti-NDUF8 (IP:83216-3-RR, 4ug; Detection:83216-3-RR 1:3000) with HepG2 cells lysate 1470 ug. This data was developed using the same antibody clone with 83216-3-PBS in a different storage buffer formulation.



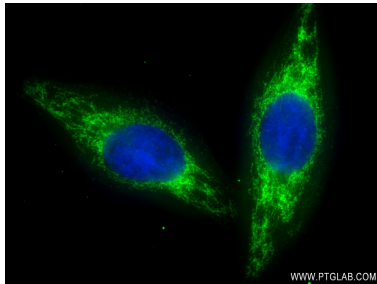
Immunohistochemical analysis of paraffin-embedded human stomach cancer tissue slide using 83216-3-RR (NDUF8 antibody) at dilution of 1:200 (under 20x lens). Heat mediated antigen retrieval with Tris-EDTA buffer(pH9). This data was developed using the same antibody clone with 83216-3-PBS in a different storage buffer formulation.



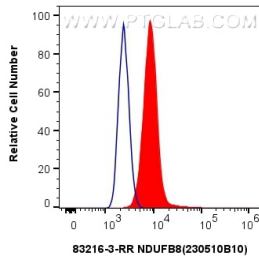
Immunohistochemical analysis of paraffin-embedded human intrahepatic cholangiocarcinoma tissue slide using 83216-3-RR (NDUF8 antibody) at dilution of 1:200 (under 20x lens). Heat mediated antigen retrieval with Tris-EDTA buffer (pH 9.0). This data was developed using the same antibody clone with 83216-3-PBS in a different storage buffer formulation.



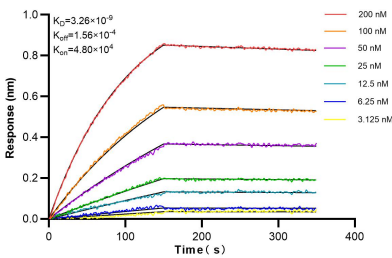
Immunofluorescent analysis of (4% PFA) fixed HepG2 cells using NDUF8 antibody (83216-3-RR, Clone: 230510B10 ) at dilution of 1:300 and CoraLite®488-Conjugated AffiniPure Goat Anti-Rabbit IgG(H+L) (SA00013-2), CL594-Phalloidin (red). This data was developed using the same antibody clone with 83216-3-PBS in a different storage buffer formulation.



Immunofluorescent analysis of (4% PFA) fixed HepG2 cells using NDUF8 antibody (83216-3-RR, Clone: 230510B10 ) at dilution of 1:250 and CoraLite®488-Conjugated AffiniPure Goat Anti-Rabbit IgG(H+L) (SA00013-2). This data was developed using the same antibody clone with 83216-3-PBS in a different storage buffer formulation.



1x10<sup>6</sup> HeLa cells were intracellularly stained with 0.25 ug NDUF8 Recombinant antibody (83216-3-RR, Clone:230510B10) and CoraLite®488-Conjugated AffiniPure Goat Anti-Rabbit IgG(H+L) (SA00013-2)(red), or 0.25 ug Isotype Control (blue). Cells were fixed with 4% PFA and permeabilized with Flow Cytometry Perm Buffer (PF00011-C). This data was developed using the same antibody clone with 83216-3-PBS in a different storage buffer formulation.



Biolayer interferometry (BLI) kinetic assays of 83216-3-RR against Human NDUF8 were performed. The affinity constant is 3.26 nM.