

For Research Use Only

RILPL1 Recombinant antibody, PBS Only



Catalog Number: **83220-6-PBS**

Basic Information

Catalog Number: 83220-6-PBS	GenBank Accession Number: BC080626	Purification Method: Protein A purification
Size: 100ug , Concentration: 1 mg/ml by Nanodrop;	GeneID (NCBI): 353116	CloneNo.: 230515D1
Source: Rabbit	UNIPROT ID: Q5EBL4	
Isotype: IgG	Full Name: Rab interacting lysosomal protein-like 1	
Immunogen Catalog Number: AG10192	Calculated MW: 252 aa, 29 kDa	

Applications

Tested Applications:
WB, ELISA

Species Specificity:
Human

Storage

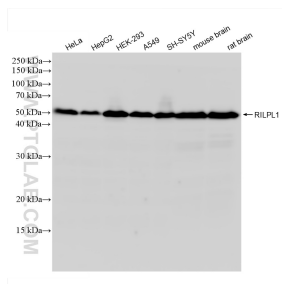
Storage:
Store at -80°C.

Storage Buffer:
PBS Only

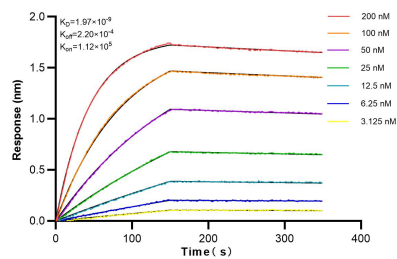
For technical support and original validation data for this product please contact:
T: 1 (888) 4PTGLAB (1-888-478-4522) (toll free in USA), or 1(312) 455-8498 (outside USA)
E: proteintech@ptglab.com
W: ptglab.com

This product is exclusively available under Proteintech Group brand and is not available to purchase from any other manufacturer.

Selected Validation Data



Various lysates were subjected to SDS PAGE followed by western blot with 83220-6-RR (RILPL1 antibody) at dilution of 1:10000 incubated at room temperature for 1.5 hours. This data was developed using the same antibody clone with 83220-6-PBS in a different storage buffer formulation.



Biolayer interferometry (BLI) kinetic assays of 83220-6-RR against Human RILPL1 were performed. The affinity constant is 1.97 nM.