

For Research Use Only

RILPL1 Recombinant antibody

Catalog Number: 83220-6-RR

Featured Product



Basic Information

Catalog Number:

83220-6-RR

Size:

100ul, Concentration: 1000 ug/ml by Nanodrop;

Source:

Rabbit

Isotype:

IgG

Immunogen Catalog Number:

AG10192

GenBank Accession Number:

BC080626

GeneID (NCBI):

353116

UNIPROT ID:

Q5EBL4

Full Name:

Rab interacting lysosomal protein-like 1

Calculated MW:

252 aa, 29 kDa

Observed MW:

50 kDa

Purification Method:

Protein A purification

CloneNo.:

230515D1

Recommended Dilutions:

WB 1:5000-1:50000

Applications

Tested Applications:

WB, ELISA

Species Specificity:

human, mouse, rat

Positive Controls:

WB : HeLa cells, HepG2 cells, HEK-293 cells, A549 cells, SH-SY5Y cells, mouse brain tissue, rat brain tissue

Background Information

Rab effector-related proteins Rab-interacting lysosomal protein-like 1 (Rilpl1) and Rilpl2 regulate protein localization in the primary cilium. Rilpl2 was initially identified as up-regulated in ciliating mouse tracheal epithelial cells. Rilpl1 and Rilpl2 both localize to the primary cilium and centrosome, Rilpl1 specifically to the distal end of the mother centriole. (PMID:23264467)

Storage

Storage:

Store at -20°C. Stable for one year after shipment.

Storage Buffer:

PBS with 0.02% sodium azide and 50% glycerol pH 7.3.

Aliquoting is unnecessary for -20°C storage

*** 20ul sizes contain 0.1% BSA

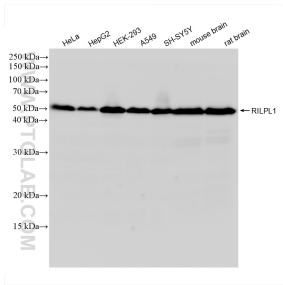
For technical support and original validation data for this product please contact:

T: 1 (888) 4PTGLAB (1-888-478-4522) (toll free in USA), or 1(312) 455-8498 (outside USA)

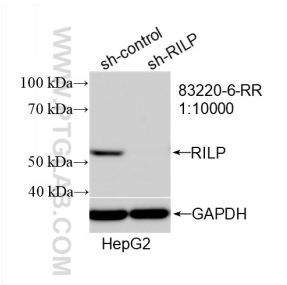
E: proteintech@ptglab.com
W: ptglab.com

This product is exclusively available under Proteintech Group brand and is not available to purchase from any other manufacturer.

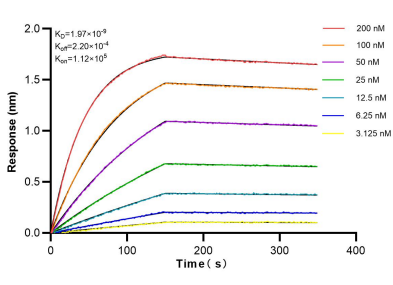
Selected Validation Data



Various lysates were subjected to SDS PAGE followed by western blot with 83220-6-RR (RILPL1 antibody) at dilution of 1:10000 incubated at room temperature for 1.5 hours.



WB result of RILPL1 antibody (83220-6-RR; 1:10000; incubated at room temperature for 1.5 hours) with sh-Control and sh-RILPL1 transfected HepG2 cells.



Biolayer interferometry (BLI) kinetic assays of 83220-6-RR against Human RILPL1 were performed. The affinity constant is 1.97 nM.