

For Research Use Only

# Rat Havcr1 Recombinant antibody, PBS Only (Detector)

Catalog Number: 83221-5-PBS



## Basic Information

<b>Catalog Number:</b> 83221-5-PBS	<b>GenBank Accession Number:</b> NM_173149.2	<b>Purification Method:</b> Protein A purification
<b>Size:</b> 100ug , Concentration: 1 mg/ml by Nanodrop;	<b>GeneID (NCBI):</b> 286934	<b>CloneNo.:</b> 230528B3
<b>Source:</b> Rabbit	<b>UNIPROT ID:</b> O54947	
<b>Isotype:</b> IgG	<b>Full Name:</b> hepatitis A virus cellular receptor 1	
<b>Immunogen Catalog Number:</b> EG0597	<b>Calculated MW:</b> 34 kDa	

## Applications

**Tested Applications:**  
Sandwich ELISA, Indirect ELISA, Sample test

**Species Specificity:**  
rat

## Product Information

83221-5-PBS targets Havcr1 as part of a matched antibody pair:

MP00213-3: 83221-1-PBS capture and 83221-5-PBS detection (validated in Sandwich ELISA)

Unconjugated rabbit recombinant monoclonal antibody in PBS only (BSA and azide free) storage buffer at a concentration of 1 mg/mL, ready for conjugation. Created using Proteintech's proprietary in-house recombinant technology. Recombinant production enables unrivalled batch-to-batch consistency, easy scale-up, and future security of supply.

This conjugation ready format makes antibodies ideal for use in many applications including: ELISAs, multiplex assays requiring matched pairs, mass cytometry, and multiplex imaging applications. Antibody use should be optimized by the end user for each application and assay.

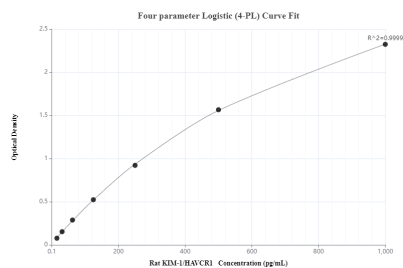
## Storage

**Storage:**  
Store at -80°C.  
**Storage Buffer:**  
PBS only, pH7.3

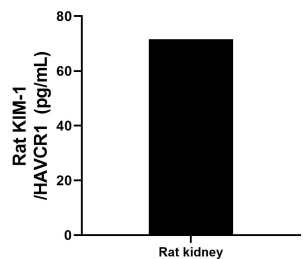
For technical support and original validation data for this product please contact:  
T: 1 (888) 4PTGLAB (1-888-478-4522) (toll free in USA), or 1(312) 455-8498 (outside USA)  
E: [proteintech@ptglab.com](mailto:proteintech@ptglab.com)  
W: [ptglab.com](http://ptglab.com)

This product is exclusively available under Proteintech Group brand and is not available to purchase from any other manufacturer.

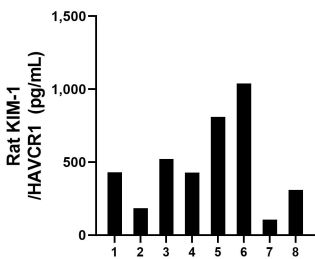
## Selected Validation Data



Sandwich ELISA standard curve of MP00213-3, Rat KIM-1/HAVCR1 Monoclonal Matched Antibody Pair - PBS only. 83221-1-PBS was coated to a plate as the capture antibody and incubated with serial dilutions of standard Eg0597. 83221-5-PBS was HRP conjugated as the detection antibody. Range: 15.6-1000 pg/mL



Organs from 2 rats were rinsed with PBS to remove excess blood, chopped into 1-2 mm pieces, homogenized in 5-10 mL of PBS in a tissue homogenizer, and stored at  $\leq -80^{\circ}\text{C}$  5 min. After two freeze-thaw cycles were performed to break the cell membranes, the homogenates were centrifuged for 5 minutes at 5000 x g to remove particulate. Homogenates from rat kidney tissue were assayed for rat KIM-1/HAVCR1 and measured 71.6 pg/mL



Serum of eight individual healthy rats were measured. The rat KIM-1/HAVCR1 concentration of detected samples was determined to be 478.5 pg/mL with a range of 105.6-1,038.5 pg/mL