

For Research Use Only

# PARK2/Parkin Recombinant monoclonal antibody, PBS Only

Catalog Number: 83224-5-PBS



## Basic Information

<b>Catalog Number:</b> 83224-5-PBS	<b>GenBank Accession Number:</b> BC022014	<b>Purification Method:</b> Protein A purification
<b>Size:</b> 100ug , Concentration: 1 mg/ml by Nanodrop;	<b>GeneID (NCBI):</b> 5071	<b>CloneNo.:</b> 252526H5
<b>Source:</b> Rabbit	<b>UNIPROT ID:</b> O60260	
<b>Isotype:</b> IgG	<b>Full Name:</b> Parkinson disease (autosomal recessive, juvenile) 2, parkin	
<b>Immunogen Catalog Number:</b> AG5092	<b>Calculated MW:</b> 52 kDa	
	<b>Observed MW:</b> 45-55 kDa	

## Applications

**Tested Applications:**  
WB, Indirect ELISA

**Species Specificity:**  
human, mouse

## Background Information

Parkin, a RING-type E3 ubiquitin-protein ligase, is involved in the ubiquitination pathway and contributes to protection from neurotoxicity induced by unfolded protein stresses. Its ubiquitin-protein ligase activity promotes the degradation of a variety of proteins including itself. Mutations in Parkin are implicated in the pathogenesis of autosomal recessive familial Parkinson's disease.

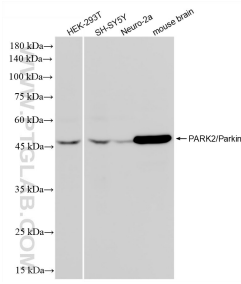
## Storage

**Storage:**  
Store at -80°C.  
**Storage Buffer:**  
PBS only, pH7.3

For technical support and original validation data for this product please contact:  
T: 1 (888) 4PTGLAB (1-888-478-4522) (toll free in USA), or 1(312) 455-8498 (outside USA)      E: proteintech@ptglab.com  
W: ptglab.com

This product is exclusively available under Proteintech Group brand and is not available to purchase from any other manufacturer.

## Selected Validation Data



Various lysates were subjected to SDS PAGE followed by western blot with 83224-5-RR (Parkin antibody) at dilution of 1:5000 incubated at room temperature for 1.5 hours. This data was developed using the same antibody clone with 83224-5-PBS in a different storage buffer formulation.